



# SZABO SCANDIC

Part of Europa Biosite

## Produktinformation



Forschungsprodukte & Biochemikalien



Zellkultur & Verbrauchsmaterial



Diagnostik & molekulare Diagnostik



Laborgeräte & Service

Weitere Information auf den folgenden Seiten!  
See the following pages for more information!



### Lieferung & Zahlungsart

siehe unsere [Liefer- und Versandbedingungen](#)

### Zuschläge

- Mindermengenzuschlag
- Trockeneiszuschlag
- Gefahrgutzuschlag
- Expressversand

### SZABO-SCANDIC HandelsgmbH

Quellenstraße 110, A-1100 Wien

T. +43(0)1 489 3961-0

F. +43(0)1 489 3961-7

[mail@szabo-scandic.com](mailto:mail@szabo-scandic.com)

[www.szabo-scandic.com](http://www.szabo-scandic.com)

[linkedin.com/company/szaboscandic](https://www.linkedin.com/company/szaboscandic) 

## BMP1 293T Cell Transient Overexpression Lysate(Denatured)

Catalog # : H00000649-T01

規格 : [ 100 uL ]

List All

### Specification

**Transfected Cell Line:** 293T

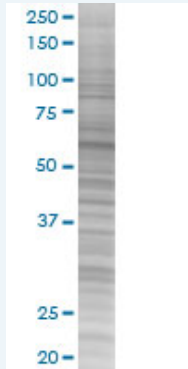
**Plasmid:** pCMV-BMP1 full-length

**Host:** Human

**Theoretical MW (kDa):** 68.53

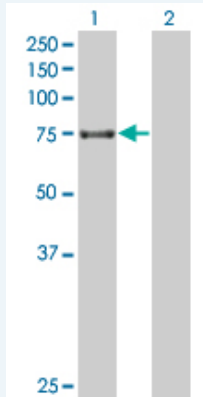
**Quality Control Testing:** Transient overexpression cell lysate was tested with Anti-BMP1 antibody (H00000649-B01) by Western Blots.

#### SDS-PAGE Gel



BMP1 transfected lysate.

#### Western Blot



Lane 1: BMP1 transfected lysate ( 68.53 KDa)

Lane 2: Non-transfected lysate.

**Storage Buffer:** 1X Sample Buffer (50 mM Tris-HCl, 2% SDS, 10% glycerol, 300 mM 2-mercaptoethanol, 0.01% Bromophenol blue)

**Storage Instruction:** Store at -80°C. Aliquot to avoid repeated freezing and thawing.

**MSDS:**  [Download](#)

### Applications

### Application Image

Western Blot

## Western Blot

### Gene Information

Entrez GeneID: [649](#)

GeneBank Accession#: [ENST00000306358](#)

Protein Accession#: =

Gene Name: BMP1

Gene Alias: FLJ44432,PCOLC,PCP,TLD,pCP-2

Gene Description: bone morphogenetic protein 1

Omim ID: [112264](#)

Gene Ontology: [Hyperlink](#)

**Gene Summary:** This gene encodes a protein that is capable of inducing formation of cartilage in vivo. Although other bone morphogenetic proteins are members of the TGF-beta superfamily, this gene encodes a protein that is not closely related to other known growth factors. This gene is expressed as alternatively spliced variants that share an N-terminal protease domain but differ in their C-terminal region. [provided by RefSeq]

Other Designations: procollagen C-endopeptidase,procollagen C-proteinase

### Related Disease

[Alzheimer Disease](#) [Alzheimer disease](#) [Cardiovascular Diseases](#) [Colorectal Neoplasms](#)  
[Diabetes Complications](#) [Genetic Predisposition to Disease](#) [Kidney Failure, Chronic](#)  
[Metabolic Syndrome X](#) [Microsatellite Instability](#) [Neoplasms](#) [Osteoporosis](#)  
[Ovarian Neoplasms](#) [Stomach Neoplasms](#)

[服務條款](#) | [隱私權政策](#) | [著作及商標](#) | [網站地圖](#)

©2016 亞諾法生技股份有限公司 Abnova Corporation. 版權所有.