



SZABO SCANDIC

Part of Europa Biosite

Produktinformation



Forschungsprodukte & Biochemikalien



Zellkultur & Verbrauchsmaterial



Diagnostik & molekulare Diagnostik



Laborgeräte & Service

Weitere Information auf den folgenden Seiten!
See the following pages for more information!



Lieferung & Zahlungsart

siehe unsere [Liefer- und Versandbedingungen](#)

Zuschläge

- Mindermengenzuschlag
- Trockeneiszuschlag
- Gefahrgutzuschlag
- Expressversand

SZABO-SCANDIC HandelsgmbH

Quellenstraße 110, A-1100 Wien

T. +43(0)1 489 3961-0

F. +43(0)1 489 3961-7

mail@szabo-scandic.com

www.szabo-scandic.com

[linkedin.com/company/szaboscandic](https://www.linkedin.com/company/szaboscandic) 

BMP2 monoclonal antibody (M02), clone 1A11

Catalog # : H00000650-M02

規格 : [100 ug]

[List All](#)

Specification

Product Description: Mouse monoclonal antibody raised against a partial recombinant BMP2.

Immunogen: BMP2 (NP_001191, 283 a.a. ~ 396 a.a) partial recombinant protein with GST tag. MW of the GST tag alone is 26 KDa.

Sequence: QAKHKQRKRLKSSCKRHPLYVDFSDVGWNDWIVAPPGYHAFYCHGECF
FPLADHLNSTNHAIVQTLVNSVNSKIPKACCVPTELSAISMPLYLDENEKVL
KNYQDMVVEGCGCR

Host: Mouse

Reactivity: Human

Isotype: IgG2a Kappa

Quality Control Testing: Antibody Reactive Against Recombinant Protein.

Storage Buffer: In 1x PBS, pH 7.4

Storage Instruction: Store at -20°C or lower. Aliquot to avoid repeated freezing and thawing.

MSDS:  [Download](#)

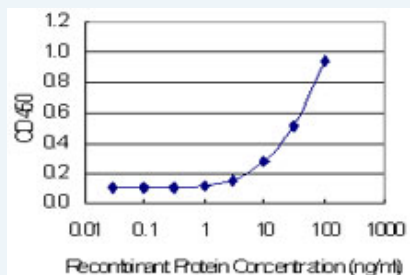
Datasheet:  [Download](#)

Publication Reference


1. [Traumatized and inflamed - but resilient: Glial aromatization and the avian brain.](#)
Duncan KA, Walters BJ, Saldanha CJ. *Horm Behav.* 2012 Mar 5. [Epub ahead of print]

Applications

Sandwich ELISA (Recombinant protein)



Detection limit for recombinant GST tagged BMP2 is 1 ng/ml as a capture antibody.

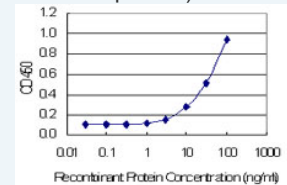
 [Protocol Download](#)


ELISA

Gene Information

Application Image

Sandwich ELISA (Recombinant protein)



 [enlarge](#)

ELISA

Entrez GeneID: [650](#)

GeneBank [NM_001200](#)
Accession#:

Protein [NP_001191](#)
Accession#:

Gene Name: BMP2

Gene Alias: BMP2A

Gene Description: bone morphogenetic protein 2

Omim ID: [112261](#), [235200](#)

Gene Ontology: [Hyperlink](#)

Gene Summary: The protein encoded by this gene belongs to the transforming growth factor-beta (TGFB) superfamily. The encoded protein acts as a disulfide-linked homodimer and induces bone and cartilage formation. [provided by RefSeq]

Other Designations: OTTHUMP00000030228

Gene Pathway

[Basal cell carcinoma](#) [Cytokine-cytokine receptor interaction](#) [Hedgehog signaling pathway](#)
[Pathways in cancer](#) [TGF-beta signaling pathway](#)

Related Disease

[Abortion, Spontaneous](#) [Asthma](#) [Calcinosis](#) [Cardiovascular Diseases](#) [Cleft Lip](#) [Cleft Palate](#)
[Colorectal Neoplasms](#) [Diabetes Mellitus, Type 1](#) [Diabetes Mellitus, Type 2](#)
[Diabetic Nephropathies](#) [Disease Progression](#) [Edema](#) [Genetic Predisposition to Disease](#)
[Hemochromatosis](#) [Hyperparathyroidism](#) [Secondary Kidney Failure](#) [Chronic Narcolepsy](#)
[Obesity](#) [Ossification of Posterior Longitudinal Ligament](#)

[... see more](#)