



SZABO SCANDIC

Part of Europa Biosite

Produktinformation



Forschungsprodukte & Biochemikalien



Zellkultur & Verbrauchsmaterial



Diagnostik & molekulare Diagnostik



Laborgeräte & Service

Weitere Information auf den folgenden Seiten!
See the following pages for more information!



Lieferung & Zahlungsart

siehe unsere [Liefer- und Versandbedingungen](#)

Zuschläge

- Mindermengenzuschlag
- Trockeneiszuschlag
- Gefahrgutzuschlag
- Expressversand

SZABO-SCANDIC HandelsgmbH

Quellenstraße 110, A-1100 Wien

T. +43(0)1 489 3961-0

F. +43(0)1 489 3961-7

mail@szabo-scandic.com

www.szabo-scandic.com

[linkedin.com/company/szaboscandic](https://www.linkedin.com/company/szaboscandic) 

BMP2 monoclonal antibody (M03), clone 4B12

Catalog # : H00000650-M03

規格 : [100 ug]

[List All](#)

Specification

Product Description: Mouse monoclonal antibody raised against a partial recombinant BMP2.

Immunogen: BMP2 (NP_001191, 283 a.a. ~ 396 a.a) partial recombinant protein with GST tag. MW of the GST tag alone is 26 KDa.

Sequence: QAKHKQRKRLKSSCKRHPLYVDFSDVGWWDWVAPPGYHAFYCHGCEP
FPLADHLNSTNHAIVQTLVNSVNSKIPKACCVPTELSAISMLYLDENEKVVL
KNYQDMVVEGCGCR

Host: Mouse

Reactivity: Human

Isotype: IgG2a Kappa

Quality Control Testing: Antibody Reactive Against Recombinant Protein.

Storage Buffer: In 1x PBS, pH 7.4

Storage Instruction: Store at -20°C or lower. Aliquot to avoid repeated freezing and thawing.

MSDS:  [Download](#)

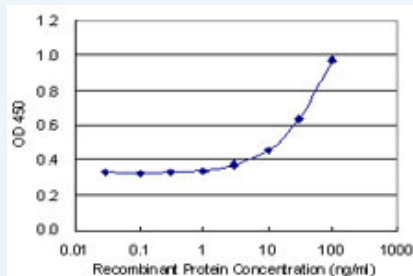
Datasheet:  [Download](#)

Publication Reference


1. [Antibody-mediated osseous regeneration: a novel strategy for bioengineering bone by immobilized anti-bone morphogenetic protein-2 antibodies.](#)
Freire MO, You HK, Kook JK, Choi JH, Zadeh HH. *Tissue Eng Part A*. 2011 Dec;17(23-24):2911-8. Epub 2011 Aug 26.

Applications

Sandwich ELISA (Recombinant protein)



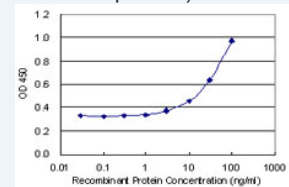
Detection limit for recombinant GST tagged BMP2 is 1 ng/ml as a capture antibody.


 [Protocol Download](#)

ELISA

Application Image

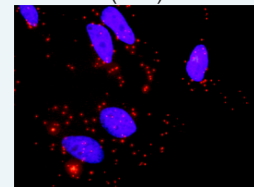
Sandwich ELISA (Recombinant protein)



 [enlarge](#)

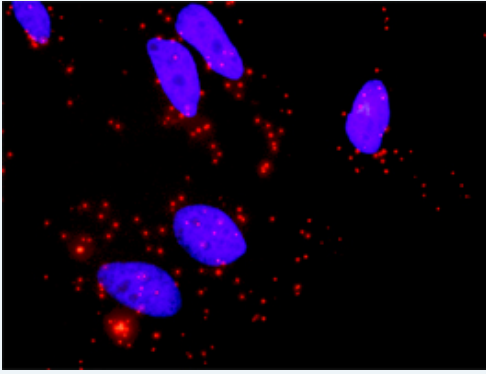
ELISA

In situ Proximity Ligation Assay (Cell)



 [enlarge](#)

In situ Proximity Ligation Assay (Cell)



Proximity Ligation Analysis of protein-protein interactions between TGFB2 and BMP2. HeLa cells were stained with anti-TGFB2 rabbit purified polyclonal 1:1200 and anti-BMP2 mouse monoclonal antibody 1:50. Each red dot represents the detection of protein-protein interaction complex, and nuclei were counterstained with DAPI (blue).

Gene Information

Entrez GeneID: [650](#)

GeneBank [NM_001200](#)
Accession#:

Protein [NP_001191](#)
Accession#:

Gene Name: BMP2

Gene Alias: BMP2A

Gene Description: bone morphogenetic protein 2

Omim ID: [112261](#), [235200](#)

Gene Ontology: [Hyperlink](#)

Gene Summary: The protein encoded by this gene belongs to the transforming growth factor-beta (TGFB) superfamily. The encoded protein acts as a disulfide-linked homodimer and induces bone and cartilage formation. [provided by RefSeq]

Other Designations: OTTHUMP00000030228

Gene Pathway

[Basal cell carcinoma](#) [Cytokine-cytokine receptor interaction](#) [Hedgehog signaling pathway](#)
[Pathways in cancer](#) [TGF-beta signaling pathway](#)

Related Disease

[Abortion](#), [Spontaneous](#) [Asthma](#) [Calcinosis](#) [Cardiovascular Diseases](#) [Cleft Lip](#) [Cleft Palate](#)
[Colorectal Neoplasms](#) [Diabetes Mellitus, Type 1](#) [Diabetes Mellitus, Type 2](#)
[Diabetic Nephropathies](#) [Disease Progression](#) [Edema](#) [Genetic Predisposition to Disease](#)
[Hemochromatosis](#) [Hyperparathyroidism](#), [Secondary Kidney Failure](#), [Chronic Narcolepsy](#)
[Obesity](#) [Ossification of Posterior Longitudinal Ligament](#)

... see more

