



# SZABO SCANDIC

Part of Europa Biosite

## Produktinformation



Forschungsprodukte & Biochemikalien



Zellkultur & Verbrauchsmaterial



Diagnostik & molekulare Diagnostik



Laborgeräte & Service

Weitere Information auf den folgenden Seiten!  
See the following pages for more information!



### Lieferung & Zahlungsart

siehe unsere [Liefer- und Versandbedingungen](#)

### Zuschläge

- Mindermengenzuschlag
- Trockeneiszuschlag
- Gefahrgutzuschlag
- Expressversand

### SZABO-SCANDIC HandelsgmbH

Quellenstraße 110, A-1100 Wien

T. +43(0)1 489 3961-0

F. +43(0)1 489 3961-7

[mail@szabo-scandic.com](mailto:mail@szabo-scandic.com)

[www.szabo-scandic.com](http://www.szabo-scandic.com)

[linkedin.com/company/szaboscandic](https://www.linkedin.com/company/szaboscandic) 

## BMP2 293T Cell Transient Overexpression Lysate(Denatured)

Catalog # : H00000650-T01

規格 : [ 100 uL ]

List All

### Specification

**Transfected Cell Line:** 293T

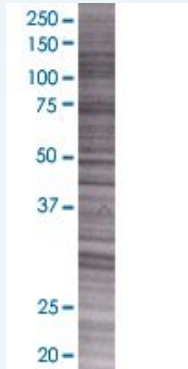
**Plasmid:** pCMV-BMP2 full-length

**Host:** Human

**Theoretical MW (kDa):** 43.56

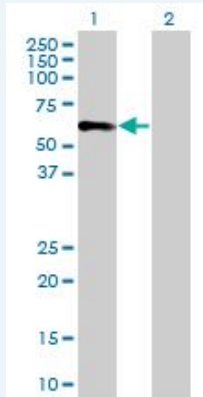
**Quality Control Testing:** Transient overexpression cell lysate was tested with Anti-BMP2 antibody (H00000650-B01) by Western Blots.

#### SDS-PAGE Gel



BMP2 transfected lysate.

#### Western Blot



Lane 1: BMP2 transfected lysate ( 43.56 KDa)

Lane 2: Non-transfected lysate.

**Storage Buffer:** 1X Sample Buffer (50 mM Tris-HCl, 2% SDS, 10% glycerol, 300 mM 2-mercaptoethanol, 0.01% Bromophenol blue)

**Storage Instruction:** Store at -80°C. Aliquot to avoid repeated freezing and thawing.

**MSDS:**  [Download](#)

### Applications

## Western Blot

### Gene Information

Entrez GeneID: [650](#)

GeneBank [BC148689](#)  
Accession#:

Protein [AAI48690.1](#)  
Accession#:

Gene Name: BMP2

Gene Alias: BMP2A

Gene Description: bone morphogenetic protein 2

Omim ID: [112261](#), [235200](#)

Gene Ontology: [Hyperlink](#)

**Gene Summary:** The protein encoded by this gene belongs to the transforming growth factor-beta (TGFB) superfamily. The encoded protein acts as a disulfide-linked homodimer and induces bone and cartilage formation. [provided by RefSeq]

Other Designations: OTTHUMP00000030228

### Gene Pathway

[Basal cell carcinoma](#) [Cytokine-cytokine receptor interaction](#) [Hedgehog signaling pathway](#)  
[Pathways in cancer](#) [TGF-beta signaling pathway](#)

### Related Disease

[Abortion](#), [Spontaneous Asthma](#) [Calcinosis](#) [Cardiovascular Diseases](#) [Cleft Lip](#) [Cleft Palate](#)  
[Colorectal Neoplasms](#) [Diabetes Mellitus, Type 1](#) [Diabetes Mellitus, Type 2](#)  
[Diabetic Nephropathies](#) [Disease Progression](#) [Edema](#) [Genetic Predisposition to Disease](#)  
[Hemochromatosis](#) [Hyperparathyroidism, Secondary](#) [Kidney Failure, Chronic](#) [Narcolepsy](#)  
[Obesity](#) [Ossification of Posterior Longitudinal Ligament](#)

... see more