



# SZABO SCANDIC

Part of Europa Biosite

## Produktinformation



Forschungsprodukte & Biochemikalien



Zellkultur & Verbrauchsmaterial



Diagnostik & molekulare Diagnostik



Laborgeräte & Service

Weitere Information auf den folgenden Seiten!  
See the following pages for more information!



### Lieferung & Zahlungsart

siehe unsere [Liefer- und Versandbedingungen](#)

### Zuschläge

- Mindermengenzuschlag
- Trockeneiszuschlag
- Gefahrgutzuschlag
- Expressversand

### SZABO-SCANDIC HandelsgmbH

Quellenstraße 110, A-1100 Wien

T. +43(0)1 489 3961-0

F. +43(0)1 489 3961-7

[mail@szabo-scandic.com](mailto:mail@szabo-scandic.com)

[www.szabo-scandic.com](http://www.szabo-scandic.com)

[linkedin.com/company/szaboscandic](https://www.linkedin.com/company/szaboscandic) 

## BMPR1B MaxPab mouse polyclonal antibody (B01) MaxPab®

Catalog # : H00000658-B01

規格 : [ 50 uL ]

[List All](#)

### Specification

**Product Description:** Mouse polyclonal antibody raised against a full-length human BMPR1B protein.

**Immunogen:** BMPR1B (NP\_001194.1, 1 a.a. ~ 502 a.a) full-length human protein.

**Sequence:**  
 MLLRSAGKLVNVTKKEDGESTAPTRPKVLRCKCHHHCPEDSVNNICST  
 DGYCFTMIEEDDSGLPVVTSGLGLEGSDFQCRDTPIPHQRRSIECCTE  
 RNECNKDLHPTLPPLKNRDFVDGPIHHRALLISVTVCSLLLVLILFCYFRY  
 KRQETRPYSIGLEQDETYIPPGESLRLIEQSQSSGSGSGLPLLVQRTI  
 AKQIQMVKQIGKGRYGEVWMGKWRGEKVAVKVFFTEEASWFRETEIY  
 QTVLMRHENILGFIADIKGTGSWTQLYLITDYHENGSLYDYLKSTTLDAK  
 SMLKLAYSSVSGLCHLHTEIFSTQGKPAIAHRDLKSKNILVKKNGTCCIADL  
 GLAVKFISDTNEVDIPPNTRVGTRKRYMPPEVLDESLNRNHFQSYIMADMY  
 SFGLILWEVARRCVSGGIVEEYQLPYHDLVSPDPSYEDMREIVCIKKLRPS  
 FPNRWSSDECLRQMGKLMTECWAHNPASRLTALRVKKTAKMSESQDI  
 KL

**Host:** Mouse

**Reactivity:** Human

**Quality Control Testing:** Antibody reactive against mammalian transfected lysate.

**Storage Buffer:** No additive

**Storage Instruction:** Store at -20°C or lower. Aliquot to avoid repeated freezing and thawing.

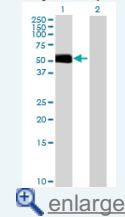
**Note:** For IHC and IF applications, antibody purification with Protein A will be needed prior to use.

**MSDS:** [Download](#)

**Datasheet:** [Download](#)

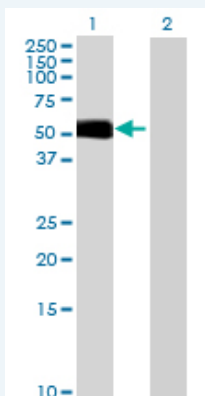
### Application Image

Western Blot (Transfected lysate)



### Applications

Western Blot (Transfected lysate)



Western Blot analysis of BMPR1B expression in transfected 293T cell line (H00000658-

T01) by BMPR1B MaxPab polyclonal antibody.

Lane 1: BMPR1B transfected lysate(55.22 KDa).

Lane 2: Non-transfected lysate.

 [Protocol Download](#)

---

## Gene Information

---

**Entrez GeneID:** [658](#)

---

**GeneBank Accession#:** [NM\\_001203.1](#)

---

**Protein Accession#:** [NP\\_001194.1](#)

---

**Gene Name:** BMPR1B

---

**Gene Alias:** ALK-6,ALK6,CDw293

---

**Gene Description:** bone morphogenetic protein receptor, type IB

---

**Omim ID:** [112600](#), [603248](#)

---

**Gene Ontology:** [Hyperlink](#)

---

**Gene Summary:** This gene encodes a member of the bone morphogenetic protein (BMP) receptor family of transmembrane serine/threonine kinases. The ligands of this receptor are BMPs, which are members of the TGF-beta superfamily. BMPs are involved in endochondral bone formation and embryogenesis. These proteins transduce their signals through the formation of heteromeric complexes of 2 different types of serine (threonine) kinase receptors: type I receptors of about 50-55 kD and type II receptors of about 70-80 kD. Type II receptors bind ligands in the absence of type I receptors, but they require their respective type I receptors for signaling, whereas type I receptors require their respective type II receptors for ligand binding. Mutations in this gene have been associated with primary pulmonary hypertension. [provided by RefSeq]

---

**Other Designations:** OTTHUMP00000161622,activin receptor-like kinase 6,serine/threonine receptor kinase

---

## Gene Pathway

---

[Cytokine-cytokine receptor interaction](#) [TGF-beta signaling pathway](#)

## Related Disease

---

[Adenomatous Polyposis Coli](#) [Cleft Lip](#) [Cleft Palate](#) [Colon cancer](#) [Colonic Neoplasms](#)  
[Genetic Predisposition to Disease](#) [Obesity](#) [Ovarian Failure, Premature](#)  
[Polycystic Ovary Syndrome](#) [Puberty, Delayed](#) [Puberty, Precocious](#) [Thrombophilia](#)  
[Tobacco Use Disorder](#)