



SZABO SCANDIC

Part of Europa Biosite

Produktinformation



Forschungsprodukte & Biochemikalien



Zellkultur & Verbrauchsmaterial



Diagnostik & molekulare Diagnostik



Laborgeräte & Service

Weitere Information auf den folgenden Seiten!
See the following pages for more information!



Lieferung & Zahlungsart

siehe unsere [Liefer- und Versandbedingungen](#)

Zuschläge

- Mindermengenzuschlag
- Trockeneiszuschlag
- Gefahrgutzuschlag
- Expressversand

SZABO-SCANDIC HandelsgmbH

Quellenstraße 110, A-1100 Wien

T. +43(0)1 489 3961-0

F. +43(0)1 489 3961-7

mail@szabo-scandic.com

www.szabo-scandic.com

[linkedin.com/company/szaboscandic](https://www.linkedin.com/company/szaboscandic) 

BMPR1B monoclonal antibody (M01), clone 2F3

Catalog # : H00000658-M01

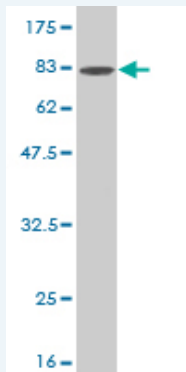
規格 : [100 ug]

[List All](#)

Specification

Product Description:	Mouse monoclonal antibody raised against a full length recombinant BMPR1B.
Immunogen:	BMPR1B (AAH47773, 14 a.a. ~ 502 a.a) full-length recombinant protein with GST tag. MW of the GST tag alone is 26 KDa.
Sequence:	KKEDGESTAPTRPKVLRCKCHHHCPEDSVNNICSTDGYCFTMIEEDDS GLPVVTSGLGLEGSDFQCRDTPIPHQRRSIECCTERNECNKDLHPTLP PLKNRDFVDGPIHHRALLISVTVCSSLLVLIILFCYFRYKRQETRPRYSIGL QDETYIPPGESLRDLIEQSQSSGSGSGLPLLVRTIAKQIQMVKQIGKGR YGEVWMGKWRGEKVAVKVFFTEEASWFRTEIYQTVLMRHENILGFIA ADIKGTGSWTQLYLITDYHENGSLYDYLKSTLDAKSMLKLAYSSVSGLC HLHTEIFSTQGKPAIAHRDLKSKNILVKKNGTCCIADLGLAVKFISDTNEVDI PPNTRVGTKRYMPPEVLDESLNRNHFQSYIMADMYSGFLILWEVARRCV SGGIVEEYQLPYHDLVPSDPSYEDMREIVCIKKLRPSFPNRWSSDECLRQ MGKLMTECWAHNPASRLTALRVKKTFAKMSSESQDIKL
Host:	Mouse
Reactivity:	Human
Isotype:	IgG1 Kappa

Quality Control Testing: Antibody Reactive Against Recombinant Protein.



Western Blot detection against Immunogen (79.53 KDa) .

Storage Buffer: In 1x PBS, pH 7.4

Storage Instruction: Store at -20°C or lower. Aliquot to avoid repeated freezing and thawing.

MSDS: [Download](#)

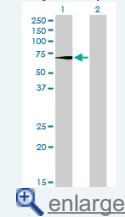
Datasheet: [Download](#)

Applications

Western Blot (Transfected lysate)

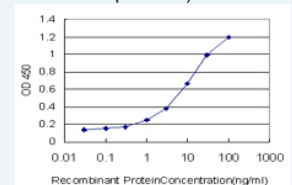
Application Image

Western Blot (Transfected lysate)



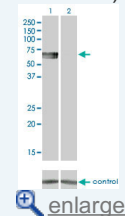
Western Blot (Recombinant protein)

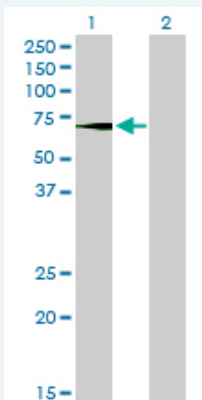
Sandwich ELISA (Recombinant protein)



ELISA

RNAi Knockdown (Antibody validated)





Western Blot analysis of BMPR1B expression in transfected 293T cell line by BMPR1B monoclonal antibody (M01), clone 2F3.

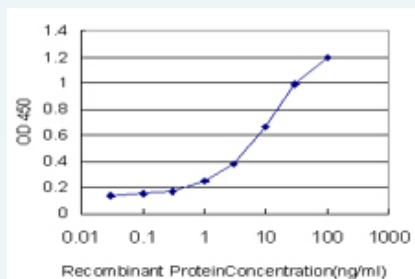
Lane 1: BMPR1B transfected lysate(56.9 KDa).
Lane 2: Non-transfected lysate.

[Protocol Download](#)

Western Blot (Recombinant protein)

[Protocol Download](#)

Sandwich ELISA (Recombinant protein)

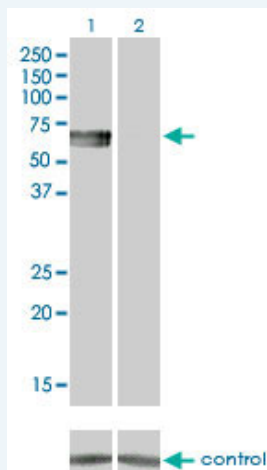


Detection limit for recombinant GST tagged BMPR1B is approximately 0.1ng/ml as a capture antibody.

[Protocol Download](#)

ELISA

RNAi Knockdown (Antibody validated)



Western blot analysis of BMPR1B over-expressed 293 cell line, cotransfected with BMPR1B Validated Chimera RNAi (Cat # H00000658-R01V) (Lane 2) or non-transfected control (Lane 1). Blot probed with BMPR1B monoclonal antibody (M01) clone 2F3 (Cat # H00000658-M01). GAPDH (36.1 kDa) used as specificity and loading control.

[Protocol Download](#)

Gene Information

Entrez GeneID: [658](#)

**GeneBank
Accession#:** [BC047773](#)

**Protein
Accession#:** [AAH47773](#)

Gene Name: [BMPR1B](#)

Gene Alias: [ALK-6,ALK6,CDw293](#)

**Gene
Description:** bone morphogenetic protein receptor, type IB

Omim ID: [112600, 603248](#)

Gene Ontology: [Hyperlink](#)

Gene Summary: This gene encodes a member of the bone morphogenetic protein (BMP) receptor family of transmembrane serine/threonine kinases. The ligands of this receptor are BMPs, which are members of the TGF-beta superfamily. BMPs are involved in endochondral bone formation and embryogenesis. These proteins transduce their signals through the formation of heteromeric complexes of 2 different types of serine (threonine) kinase receptors: type I receptors of about 50-55 kD and type II receptors of about 70-80 kD. Type II receptors bind ligands in the absence of type I receptors, but they require their respective type I receptors for signaling, whereas type I receptors require their respective type II receptors for ligand binding. Mutations in this gene have been associated with primary pulmonary hypertension. [provided by RefSeq]

**Other
Designations:** [OTTHUMP00000161622,activin receptor-like kinase 6,serine/threonine receptor kinase](#)

Gene Pathway

[Cytokine-cytokine receptor interaction](#) [TGF-beta signaling pathway](#)

Related Disease

[Adenomatous Polyposis Coli](#) [Cleft Lip](#) [Cleft Palate](#) [Colon cancer](#) [Colonic Neoplasms](#)
[Genetic Predisposition to Disease](#) [Obesity](#) [Ovarian Failure](#), [Premature](#)
[Polycystic Ovary Syndrome](#) [Puberty](#), [Delayed Puberty](#), [Precocious](#) [Thrombophilia](#)
[Tobacco Use Disorder](#)

[服務條款](#) | [隱私權政策](#) | [著作及商標](#) | [網站地圖](#)

©2016 亞諾法生技股份有限公司 Abnova Corporation. 版權所有.