



# SZABO SCANDIC

Part of Europa Biosite

## Produktinformation



Forschungsprodukte & Biochemikalien



Zellkultur & Verbrauchsmaterial



Diagnostik & molekulare Diagnostik



Laborgeräte & Service

Weitere Information auf den folgenden Seiten!  
See the following pages for more information!



### Lieferung & Zahlungsart

siehe unsere [Liefer- und Versandbedingungen](#)

### Zuschläge

- Mindermengenzuschlag
- Trockeneiszuschlag
- Gefahrgutzuschlag
- Expressversand

### SZABO-SCANDIC HandelsgmbH

Quellenstraße 110, A-1100 Wien

T. +43(0)1 489 3961-0

F. +43(0)1 489 3961-7

[mail@szabo-scandic.com](mailto:mail@szabo-scandic.com)

[www.szabo-scandic.com](http://www.szabo-scandic.com)

[linkedin.com/company/szaboscandic](https://www.linkedin.com/company/szaboscandic) 

## BMPR2 monoclonal antibody (M01), clone 4A2

Catalog # : H00000659-M01

規格 : [ 100 ug ]

[List All](#)

### Specification

<b>Product Description:</b>	Mouse monoclonal antibody raised against a partial recombinant BMPR2.
<b>Immunogen:</b>	BMPR2 (NP_001195.2, 939 a.a. ~ 1037 a.a) partial recombinant protein with GST tag. MW of the GST tag alone is 26 KDa.
<b>Sequence:</b>	NSLDLSATNVL D G S S I Q I G E S T Q D G K S G S G E K I K R V K T P Y S L K R W R P S T W V I S T E S L D C E V N N N G S N R A V H S K S S T A V Y L A E G G T A T T M V S K D I G M N C
<b>Host:</b>	Mouse
<b>Reactivity:</b>	Human
<b>Isotype:</b>	IgG2a Kappa
<b>Quality Control Testing:</b>	Antibody Reactive Against Recombinant Protein.
<b>Storage Buffer:</b>	In 1x PBS, pH 7.4

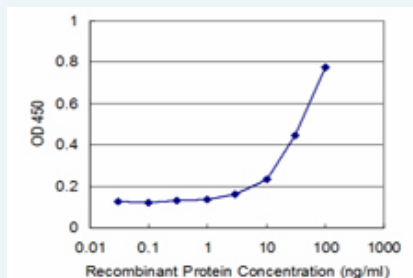
**Storage Instruction:** Store at -20°C or lower. Aliquot to avoid repeated freezing and thawing.

**MSDS:** [Download](#)

**Datasheet:** [Download](#)

### Applications

#### Sandwich ELISA (Recombinant protein)



Detection limit for recombinant GST tagged BMPR2 is approximately 3ng/ml as a capture antibody.

[Protocol Download](#)

### ELISA

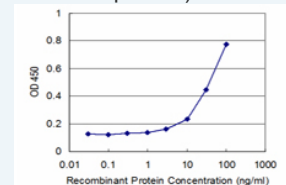
### Gene Information

**Entrez GeneID:** [659](#)

**GeneBank Accession#:** [NM\\_001204](#)

### Application Image

Sandwich ELISA (Recombinant protein)



[enlarge](#)

ELISA

**Protein Accession#:** [NP\\_001195.2](#)

**Gene Name:** [BMPR2](#)

**Gene Alias:** [BMPR-II](#), [BMPR3](#), [BMR2](#), [BRK-3](#), [FLJ41585](#), [FLJ76945](#), [PPH1](#), [T-ALK](#)

**Gene Description:** bone morphogenetic protein receptor, type II (serine/threonine kinase)

**Omim ID:** [178600](#), [265450](#), [600799](#)

**Gene Ontology:** [Hyperlink](#)

**Gene Summary:** This gene encodes a member of the bone morphogenetic protein (BMP) receptor family of transmembrane serine/threonine kinases. The ligands of this receptor are BMPs, which are members of the TGF-beta superfamily. BMPs are involved in endochondral bone formation and embryogenesis. These proteins transduce their signals through the formation of heteromeric complexes of two different types of serine (threonine) kinase receptors: type I receptors of about 50-55 kD and type II receptors of about 70-80 kD. Type II receptors bind ligands in the absence of type I receptors, but they require their respective type I receptors for signaling, whereas type I receptors require their respective type II receptors for ligand binding. Mutations in this gene have been associated with primary pulmonary hypertension, both familial and fenfluramine-associated, and with pulmonary venoocclusive disease. [provided by RefSeq]

**Other Designations:** [BMP type II receptor](#), [bone morphogenetic protein receptor type II](#), [bone morphogenetic protein receptor type-2](#), [primary pulmonary hypertension 1](#), [serine/threonine kinase](#), [type II activin receptor-like kinase](#), [type II receptor for bone morphogenetic protein-4](#)

### Gene Pathway

[Cytokine-cytokine receptor interaction](#) [TGF-beta signaling pathway](#)

### Related Disease

[Adenomatous Polyposis Coli](#) [Anemia](#), [Sickle Cell Anemia](#), [sickle cell Anoxia](#) [Cardiovascular Diseases](#) [Cleft Lip](#) [Cleft Palate](#) [Colon cancer](#) [Colonic Neoplasms](#) [Colorectal Neoplasms](#) [Genetic Predisposition to Disease](#) [Heart Defects](#), [Congenital Heart Diseases](#) [Hypertension](#) [Hypertension, Pulmonary](#) [Liver Cirrhosis](#) [Microsatellite Instability](#) [Obesity](#) [Ovarian Failure](#), [Premature](#)

... see more