



SZABO SCANDIC

Part of Europa Biosite

Produktinformation



Forschungsprodukte & Biochemikalien



Zellkultur & Verbrauchsmaterial



Diagnostik & molekulare Diagnostik



Laborgeräte & Service

Weitere Information auf den folgenden Seiten!
See the following pages for more information!



Lieferung & Zahlungsart

siehe unsere [Liefer- und Versandbedingungen](#)

Zuschläge

- Mindermengenzuschlag
- Trockeneiszuschlag
- Gefahrgutzuschlag
- Expressversand

SZABO-SCANDIC HandelsgmbH

Quellenstraße 110, A-1100 Wien

T. +43(0)1 489 3961-0

F. +43(0)1 489 3961-7

mail@szabo-scandic.com

www.szabo-scandic.com

[linkedin.com/company/szaboscandic](https://www.linkedin.com/company/szaboscandic) 

BPHL MaxPab mouse polyclonal antibody (B01) MaxPab®

Catalog # : H00000670-B01

規格 : [50 uL]

[List All](#)

Specification

Product Description: Mouse polyclonal antibody raised against a full-length human BPHL protein.

Immunogen: BPHL (NP_004323.1, 1 a.a. ~ 274 a.a) full-length human protein.

Sequence:
 MPRNLLYSLLSSHLSPHFSTSVTSKAVAVNGVQLHYQQTGEGDHAVLLL
 PGMLGSGETDFGSQLKLNKLFVVAWDPRGYGHSRPPDRDFPADF
 FERDAKDAVDLMKALKFKKVSLLGWSGGITALIAAAKYPYIHKMVIWG
 ANAYVTDEDSMIYEGIRDVSKWSERTRKPLEALYGYDYFARTCEKWVDG
 IRQFKHLPDGNICRHLLPRVQCPALIVHGEKDPLVPRFHADFIHKHVKGSR
 LHLMPGKHNLHLRFADEFNKLAEDFLQ

Host: Mouse

Reactivity: Human

Quality Control Testing: Antibody reactive against mammalian transfected lysate.

Storage Buffer: No additive

Storage Instruction: Store at -20°C or lower. Aliquot to avoid repeated freezing and thawing.

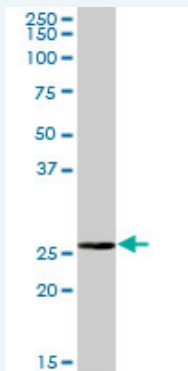
Note: For IHC and IF applications, antibody purification with Protein A will be needed prior to use.

MSDS:  [Download](#)

Datasheet:  [Download](#)

Applications

Western Blot (Tissue lysate)



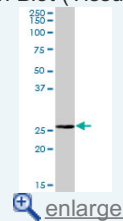
BPHL MaxPab polyclonal antibody. Western Blot analysis of BPHL expression in human liver.

 [Protocol Download](#)

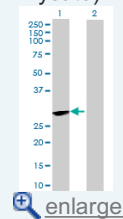
Western Blot (Transfected lysate)

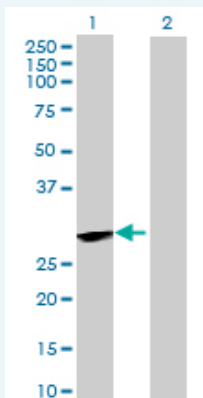
Application Image

Western Blot (Tissue lysate)



Western Blot (Transfected lysate)





Western Blot analysis of BPHL expression in transfected 293T cell line ([H00000670-T01](#)) by BPHL MaxPab polyclonal antibody.

Lane 1: BPHL transfected lysate(30.14 KDa).
Lane 2: Non-transfected lysate.

 [Protocol Download](#)

Gene Information

Entrez GeneID: [670](#)

GeneBank Accession#: [NM_004332.1](#)

Protein Accession#: [NP_004323.1](#)

Gene Name: BPHL

Gene Alias: Bph-rp,MCNAA,MGC125930,MGC41865

Gene Description: biphenyl hydrolase-like (serine hydrolase)

Omim ID: [603156](#)

Gene Ontology: [Hyperlink](#)

Gene Summary: This gene encodes a member of the serine protease family of hydrolytic enzymes which contain a serine in their active site. The encoded protein may play a role in activation of the antiviral prodrug valacyclovir. Alternatively spliced transcript variants have been described

Other Designations: OTTHUMP00000015959,biphenyl hydrolase-like,biphenyl hydrolase-like (serine hydrolase; breast epithelial mucin-associated antigen),breast epithelial mucin-associated antigen,valacyclovirase

[服務條款](#) | [隱私權政策](#) | [著作及商標](#) | [網站地圖](#)

©2016 亞諾法生技股份有限公司 Abnova Corporation. 版權所有.