



SZABO SCANDIC

Part of Europa Biosite

Produktinformation



Forschungsprodukte & Biochemikalien



Zellkultur & Verbrauchsmaterial



Diagnostik & molekulare Diagnostik



Laborgeräte & Service

Weitere Information auf den folgenden Seiten!
See the following pages for more information!



Lieferung & Zahlungsart

siehe unsere [Liefer- und Versandbedingungen](#)

Zuschläge

- Mindermengenzuschlag
- Trockeneiszuschlag
- Gefahrgutzuschlag
- Expressversand

SZABO-SCANDIC HandelsgmbH

Quellenstraße 110, A-1100 Wien

T. +43(0)1 489 3961-0

F. +43(0)1 489 3961-7

mail@szabo-scandic.com

www.szabo-scandic.com

[linkedin.com/company/szaboscandic](https://www.linkedin.com/company/szaboscandic) 

BRCA2 monoclonal antibody (M01), clone 3D12

Catalog # : H00000675-M01

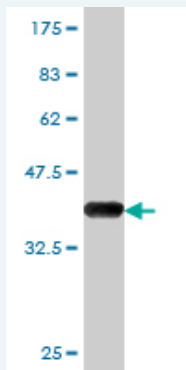
規格 : [100 ug]

[List All](#)

Specification

Product Description:	Mouse monoclonal antibody raised against a partial recombinant BRCA2.
Immunogen:	BRCA2 (NP_000050, 3319 a.a. ~ 3418 a.a) partial recombinant protein with GST tag. MW of the GST tag alone is 26 KDa.
Sequence:	SPQMTPFKFKFNEISLLESNSIADDEELALINTQALLSGSTGEKQFISVSESTR TAPTSSDYLRRLKRRCTTSLIKEQESSQASTECEKNKQDTITTKKYI
Host:	Mouse
Reactivity:	Human
Isotype:	IgG3 Kappa

Quality Control Testing: Antibody Reactive Against Recombinant Protein.



Western Blot detection against Immunogen (36.63 KDa) .

Storage Buffer: In 1x PBS, pH 7.4

Storage Instruction: Store at -20°C or lower. Aliquot to avoid repeated freezing and thawing.

MSDS: [Download](#)

Datasheet: [Download](#)

Applications

Western Blot (Recombinant protein)

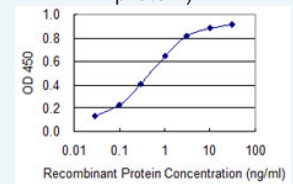
[Protocol Download](#)

Sandwich ELISA (Recombinant protein)

Application Image

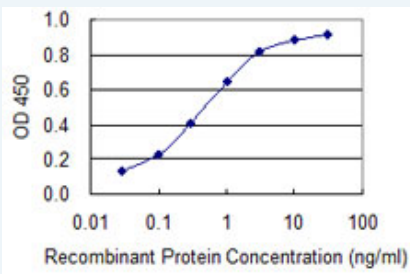
Western Blot (Recombinant protein)

Sandwich ELISA (Recombinant protein)



[enlarge](#)

ELISA



Detection limit for recombinant GST tagged BRCA2 is 0.03 ng/ml as a capture antibody.

 [Protocol Download](#)

ELISA

Gene Information

Entrez GeneID: [675](#)

GeneBank [NM_000059](#)

Accession#:

Protein [NP_000050](#)

Accession#:

Gene Name: BRCA2

Gene Alias: BRCC2,FACD,FAD,FAD1,FANCB,FANCD,FANCD1

Gene Description: breast cancer 2, early onset

Omim ID: [114480](#), [155255](#), [176807](#), [194070](#), [260350](#), [600185](#), [605724](#)

Gene Ontology: [Hyperlink](#)

Gene Summary: Inherited mutations in BRCA1 and this gene, BRCA2, confer increased lifetime risk of developing breast or ovarian cancer. Both BRCA1 and BRCA2 are involved in maintenance of genome stability, specifically the homologous recombination pathway for double-strand DNA repair. The BRCA2 protein contains several copies of a 70 aa motif called the BRC motif, and these motifs mediate binding to the RAD51 recombinase which functions in DNA repair. BRCA2 is considered a tumor suppressor gene, as tumors with BRCA2 mutations generally exhibit loss of heterozygosity (LOH) of the wild-type allele. [provided by RefSeq]

Other Designations: BRCA1/BRCA2-containing complex, subunit 2,OTTHUMP00000018803,OTTHUMP00000042401,breast and ovarian cancer susceptibility gene, early onset,breast cancer 2 tumor suppressor,breast cancer susceptibility protein BRCA2

Gene Pathway

[Homologous recombination](#) [Pancreatic cancer](#) [Pathways in cancer](#)

Related Disease

[Abdominal Neoplasms](#) [Abortion, Habitual](#) [Abortion, Spontaneous](#) [Adenocarcinoma](#) [Adenocarcinoma, Clear Cell](#) [Adenocarcinoma, Mucinous](#) [Anticipation, Genetic](#) [Anxiety Disorders](#) [Ataxia](#) [Telangiectasia](#) [Ataxia telangiectasia](#) [Awareness](#) [Azoospermia](#) [Birth Weight](#) [Bloom Syndrome](#) [Body Image](#) [Body Weight](#) [Brain Neoplasms](#) [Breast cancer](#) [Breast Neoplasms](#)

... see more

