



SZABO SCANDIC

Part of Europa Biosite

Produktinformation



Forschungsprodukte & Biochemikalien



Zellkultur & Verbrauchsmaterial



Diagnostik & molekulare Diagnostik



Laborgeräte & Service

Weitere Information auf den folgenden Seiten!
See the following pages for more information!



Lieferung & Zahlungsart

siehe unsere [Liefer- und Versandbedingungen](#)

Zuschläge

- Mindermengenzuschlag
- Trockeneiszuschlag
- Gefahrgutzuschlag
- Expressversand

SZABO-SCANDIC HandelsgmbH

Quellenstraße 110, A-1100 Wien

T. +43(0)1 489 3961-0

F. +43(0)1 489 3961-7

mail@szabo-scandic.com

www.szabo-scandic.com

[linkedin.com/company/szaboscandic](https://www.linkedin.com/company/szaboscandic) 

ZFP36L1 monoclonal antibody (M02), clone 1A3

Catalog # : H00000677-M02

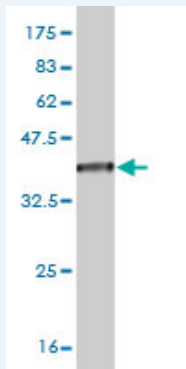
規格 : [100 ug]

List All

Specification

Product Description:	Mouse monoclonal antibody raised against a partial recombinant ZFP36L1.
Immunogen:	ZFP36L1 (NP_004917, 1 a.a. ~ 108 a.a) partial recombinant protein with GST tag. MW of the GST tag alone is 26 KDa.
Sequence:	MTTTLVSATIFDLSEVLCKGNKMLNYSAPSAGGCLLDRKAVGTPAGGGF PRRHSVTLPSSKFHQNQLLSSLKGEPAPALSSRDSRFDRSFSEGGERL LPTQKQPGGG
Host:	Mouse
Reactivity:	Human
Isotype:	IgG1 Kappa

Quality Control Testing: Antibody Reactive Against Recombinant Protein.



Western Blot detection against Immunogen (37.62 KDa) .

Storage Buffer: In 1x PBS, pH 7.4

Storage Instruction: Store at -20°C or lower. Aliquot to avoid repeated freezing and thawing.

MSDS: [Download](#)

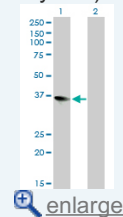
Datasheet: [Download](#)

Applications

Western Blot (Transfected lysate)

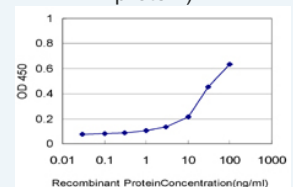
Application Image

Western Blot (Transfected lysate)



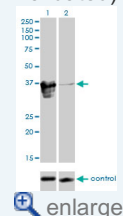
Western Blot (Recombinant protein)

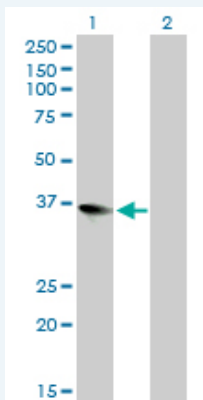
Sandwich ELISA (Recombinant protein)



ELISA

RNAi Knockdown (Antibody validated)





Western Blot analysis of ZFP36L1 expression in transfected 293T cell line by ZFP36L1 monoclonal antibody (M02), clone 1A3.

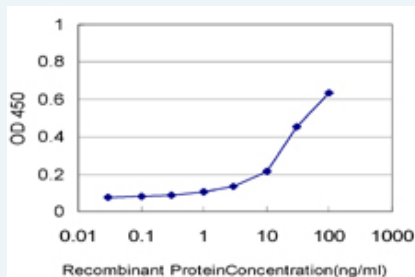
Lane 1: ZFP36L1 transfected lysate(36.3 KDa).
Lane 2: Non-transfected lysate.

[Protocol Download](#)

Western Blot (Recombinant protein)

[Protocol Download](#)

Sandwich ELISA (Recombinant protein)

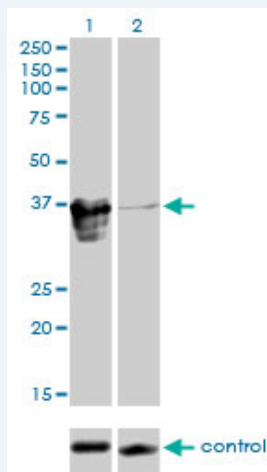


Detection limit for recombinant GST tagged ZFP36L1 is approximately 1ng/ml as a capture antibody.

[Protocol Download](#)

ELISA

RNAi Knockdown (Antibody validated)



Western blot analysis of ZFP36L1 over-expressed 293 cell line, cotransfected with ZFP36L1 Validated Chimera RNAi (Cat # H00000677-R01V) (Lane 2) or non-transfected control (Lane 1). Blot probed with ZFP36L1 monoclonal antibody (M02), clone 1A3 (Cat # H00000677-M02). GAPDH (36.1 kDa) used as specificity and loading control.

[Protocol Download](#)

Gene Information

Entrez GeneID: [677](#)

**GeneBank
Accession#:** [NM_004926](#)

**Protein
Accession#:** [NP_004917](#)

Gene Name: ZFP36L1

Gene Alias: BRF1,Berg36,ERF-1,ERF1,RNF162B,TIS11B,cMG1

**Gene
Description:** zinc finger protein 36, C3H type-like 1

Omim ID: [601064](#)

Gene Ontology: [Hyperlink](#)

Gene Summary: This gene is a member of the TIS11 family of early response genes. Family members are induced by various agonists such as the phorbol ester TPA and the polypeptide mitogen EGF. The gene is well conserved across species and has a promoter that contains motifs seen in other early-response genes. The encoded protein contains a distinguishing putative zinc finger domain with a repeating cys-his motif. This putative nuclear transcription factor most likely functions in regulating the response to growth factors. [provided by RefSeq]

**Other
Designations:** EGF-response factor 1,butyrate response factor 1,early response factor Berg36,zinc finger protein, C3H type, 36-like 1