



SZABO SCANDIC

Part of Europa Biosite

Produktinformation



Forschungsprodukte & Biochemikalien



Zellkultur & Verbrauchsmaterial



Diagnostik & molekulare Diagnostik



Laborgeräte & Service

Weitere Information auf den folgenden Seiten!
See the following pages for more information!



Lieferung & Zahlungsart

siehe unsere [Liefer- und Versandbedingungen](#)

Zuschläge

- Mindermengenzuschlag
- Trockeneiszuschlag
- Gefahrgutzuschlag
- Expressversand

SZABO-SCANDIC HandelsgmbH

Quellenstraße 110, A-1100 Wien

T. +43(0)1 489 3961-0

F. +43(0)1 489 3961-7

mail@szabo-scandic.com

www.szabo-scandic.com

[linkedin.com/company/szaboscandic](https://www.linkedin.com/company/szaboscandic) 

BRS3 polyclonal antibody (A01)

Catalog # : H00000680-A01

規格 : [50 uL]

[List All](#)

Specification

Product Description: Mouse polyclonal antibody raised against a partial recombinant BRS3.

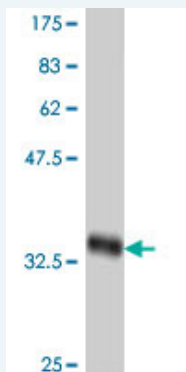
Immunogen: BRS3 (NP_001718, 290 a.a. ~ 399 a.a) partial recombinant protein with GST tag.

Sequence: LYLYHSFTSQTYVDPSAMHFIFTIFSRVLAFSNSCVNPFALYWLSKSFQK
HFKAQLFCKAERPEPPVADTSLTTLAVMGTVPGTGSIQMSEISVTSFT
GCSVKQAEDRF

Host: Mouse

Reactivity: Human

Quality Control Testing: Antibody Reactive Against Recombinant Protein.



Western Blot detection against Immunogen (38.21 KDa) .

Storage Buffer: 50 % glycerol

Storage Instruction: Store at -20°C or lower. Aliquot to avoid repeated freezing and thawing.

MSDS: [Download](#)

Datasheet: [Download](#)

Applications

Western Blot (Recombinant protein)

[Protocol Download](#)

ELISA

Gene Information

Entrez GeneID: [680](#)

GeneBank Accession#: [NM_001727](#)

Application Image

Western Blot (Recombinant protein)

ELISA

Protein Accession#: [NP_001718](#)

Gene Name: BRS3

Gene Alias: -

Gene Description: bombesin-like receptor 3

Omim ID: [300107](#)

Gene Ontology: [Hyperlink](#)

Gene Summary: Mammalian bombesin-like peptides (see MIM 137260) are widely distributed in the central nervous system as well as in the gastrointestinal tract, where they modulate smooth-muscle contraction, exocrine and endocrine processes, metabolism, and behavior. They bind to G protein-coupled receptors on the cell surface to elicit their effects. Bombesin-like peptide receptors include gastrin-releasing peptide receptor (MIM 305670), neuromedin B receptor (MIM 162341), and bombesin-like receptor-3 (BRS3) (Ohki-Hamazaki et al., 1997). [supplied by OMIM]

Other Designations: G-protein coupled receptor, OTTHUMP00000024342, bombesin receptor subtype 3

Gene Pathway

[Neuroactive ligand-receptor interaction](#)

Related Disease

[Cardiovascular Diseases](#) [Diabetes Mellitus, Type 2](#) [Edema](#)

[服務條款](#) | [隱私權政策](#) | [著作及商標](#) | [網站地圖](#)

©2016 亞諾法生技股份有限公司 Abnova Corporation. 版權所有.