



# SZABO SCANDIC

Part of Europa Biosite

## Produktinformation



Forschungsprodukte & Biochemikalien



Zellkultur & Verbrauchsmaterial



Diagnostik & molekulare Diagnostik



Laborgeräte & Service

Weitere Information auf den folgenden Seiten!  
See the following pages for more information!



### Lieferung & Zahlungsart

siehe unsere [Liefer- und Versandbedingungen](#)

### Zuschläge

- Mindermengenzuschlag
- Trockeneiszuschlag
- Gefahrgutzuschlag
- Expressversand

### SZABO-SCANDIC HandelsgmbH

Quellenstraße 110, A-1100 Wien

T. +43(0)1 489 3961-0

F. +43(0)1 489 3961-7

[mail@szabo-scandic.com](mailto:mail@szabo-scandic.com)

[www.szabo-scandic.com](http://www.szabo-scandic.com)

[linkedin.com/company/szaboscandic](https://www.linkedin.com/company/szaboscandic) 

## BST1 purified MaxPab rabbit polyclonal antibody (D01P) MaxPab®

Catalog # : H00000683-D01P

規格 : [ 100 ug ]

List All

### Specification

**Product Description:** Rabbit polyclonal antibody raised against a full-length human BST1 protein.

**Immunogen:** BST1 (AAH12095.1, 1 a.a. ~ 318 a.a) full-length human protein.

**Sequence:**  
 MAAQGCAASRLLQLLLQLLLLLLLLAAGGARARWRGEGTSAHLRDIFLG  
 RCAEYRALLSPEQRNKNCTAIWEAFKVALDKDPCSVLPSDYDLFINLSRH  
 SIPRDKSLFWENSHLLVNSFADNTRRFMPLSDVLYGRVADFLSWCRQKN  
 DSGLDYQSCPTSEDCENNPVDSFWKRASIQYSKDSSGVIHVMLNGSEPT  
 GAYPIKGFADYEIPNLQKEKITRIEWMVMEIGGPNVESCGEKSMKVLEK  
 RLKDMGFQYSCINDYRPVKLLQCVDHSTHPDCALKSAAAATQRKAPSLY  
 TEQRAGLIIPFLVLSRTQL

**Host:** Rabbit

**Reactivity:** Human

**Quality Control Testing:** Antibody reactive against mammalian transfected lysate.

**Storage Buffer:** In 1x PBS, pH 7.4

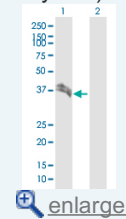
**Storage Instruction:** Store at -20°C or lower. Aliquot to avoid repeated freezing and thawing.


**MSDS:**  [Download](#)

**Datasheet:**  [Download](#)

### Application Image

Western Blot (Transfected lysate)



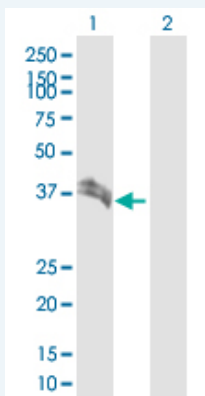
 enlarge

### Publication Reference

1. [The CD157-integrin partnership controls transendothelial migration and adhesion of human monocytes.](#)  
 Lo Buono N, Parrotta R, Morone S, Bovino P, Nacci G, Ortolan E, Horenstein AL, Inzhutova A, Ferrero E, Funaro A.J Biol Chem. 2011 Apr 8. [Epub ahead of print]

### Applications

Western Blot (Transfected lysate)



Western Blot analysis of BST1 expression in transfected 293T cell line (H00000683-T01)

by BST1 MaxPab polyclonal antibody.

Lane 1: BST1 transfected lysate(35.70 KDa).

Lane 2: Non-transfected lysate.

 [Protocol Download](#)

---

### Gene Information

---

**Entrez GeneID:** [683](#)

**GeneBank Accession#:** [BC012095.1](#)

**Protein Accession#:** [AAH12095.1](#)

**Gene Name:** BST1

**Gene Alias:** CD157

**Gene Description:** bone marrow stromal cell antigen 1

**Omim ID:** [600387](#)

**Gene Ontology:** [Hyperlink](#)

**Gene Summary:** Bone marrow stromal cell antigen-1 is a stromal cell line-derived glycosylphosphatidylinositol-anchored molecule that facilitates pre-B-cell growth. The deduced amino acid sequence exhibits 33% similarity with CD38. BST1 expression is enhanced in bone marrow stromal cell lines derived from patients with rheumatoid arthritis. The polyclonal B-cell abnormalities in rheumatoid arthritis may be, at least in part, attributed to BST1 overexpression in the stromal cell population. [provided by RefSeq]

**Other Designations:** -

---

### Gene Pathway

---

[Calcium signaling pathway](#) [Metabolic pathways](#) [Nicotinate and nicotinamide metabolism](#)

---

### Related Disease

---

[Genetic Predisposition to Disease](#) [Kidney Failure](#), [Chronic Parkinson Disease](#)