



SZABO SCANDIC

Part of Europa Biosite

Produktinformation



Forschungsprodukte & Biochemikalien



Zellkultur & Verbrauchsmaterial



Diagnostik & molekulare Diagnostik



Laborgeräte & Service

Weitere Information auf den folgenden Seiten!
See the following pages for more information!



Lieferung & Zahlungsart

siehe unsere [Liefer- und Versandbedingungen](#)

Zuschläge

- Mindermengenzuschlag
- Trockeneiszuschlag
- Gefahrgutzuschlag
- Expressversand

SZABO-SCANDIC HandelsgmbH

Quellenstraße 110, A-1100 Wien

T. +43(0)1 489 3961-0

F. +43(0)1 489 3961-7

mail@szabo-scandic.com

www.szabo-scandic.com

[linkedin.com/company/szaboscandic](https://www.linkedin.com/company/szaboscandic) 

BTC MaxPab mouse polyclonal antibody (B01) MaxPab®

Catalog # : H00000685-B01

規格 : [50 uL]

[List All](#)

Specification

Product Description: Mouse polyclonal antibody raised against a full-length human BTC protein.

Immunogen: BTC (AAH11618, 1 a.a. ~ 178 a.a) full-length human protein.

Sequence:
MDRAARCSGASSLPLLLALALGLVILHCVVADGNSTRSPETNGLLCGDP
EENCAATTTQSKRKGHF SRCPKQYKHYCIKGRCRFVWAEQTPSCVCDE
GYIGARCERVDLFLYLRGDRGQILVICMIAVMVVFILVIGVCTCCHPLRKRR
KRKKKEEEMETLGKDITPINEDIEETNIA

Host: Mouse

Reactivity: Human

Quality Control Testing: Antibody reactive against mammalian transfected lysate.

Storage Buffer: No additive

Storage Instruction: Store at -20°C or lower. Aliquot to avoid repeated freezing and thawing.

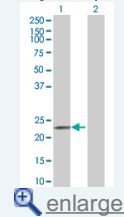
Note: For IHC and IF applications, antibody purification with Protein A will be needed prior to use.

MSDS:  [Download](#)

Datasheet:  [Download](#)

Application Image

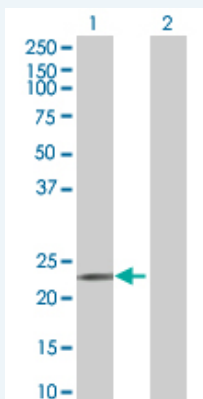
Western Blot (Transfected lysate)



 [enlarge](#)

Applications


Western Blot (Transfected lysate)



Western Blot analysis of BTC expression in transfected 293T cell line (H00000685-T02) by BTC MaxPab polyclonal antibody.

Lane 1: BTC transfected lysate(19.58 KDa).

Lane 2: Non-transfected lysate.

 [Protocol Download](#)

Gene Information

Entrez GeneID: [685](#)

GeneBank
Accession#: [BC011618](#)

Protein
Accession#: [AAH11618](#)

Gene Name: BTC

Gene Alias: -

Gene
Description: betacellulin

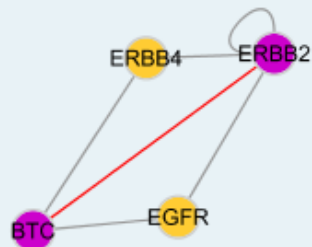
Omim ID: [600345](#)

Gene Ontology: [Hyperlink](#)

Gene Summary: The protein encoded by this gene is a member of the EGF family of growth factors. It is synthesized primarily as a transmembrane precursor, which is then processed to mature molecule by proteolytic events. This protein is a ligand for the EGF receptor. [provided by RefSeq]

Other
Designations: OTTHUMP00000160600

Interactome



Gene Pathway

[ErbB signaling pathway](#)

Related Disease

[Diabetes Mellitus, Type 1](#) [Diabetes Mellitus, Type 2](#) [Genetic Predisposition to Disease](#)
[Obesity](#)

