



# SZABO SCANDIC

Part of Europa Biosite

## Produktinformation



Forschungsprodukte & Biochemikalien



Zellkultur & Verbrauchsmaterial



Diagnostik & molekulare Diagnostik



Laborgeräte & Service

Weitere Information auf den folgenden Seiten!  
See the following pages for more information!



### Lieferung & Zahlungsart

siehe unsere [Liefer- und Versandbedingungen](#)

### Zuschläge

- Mindermengenzuschlag
- Trockeneiszuschlag
- Gefahrgutzuschlag
- Expressversand

### SZABO-SCANDIC HandelsgmbH

Quellenstraße 110, A-1100 Wien

T. +43(0)1 489 3961-0

F. +43(0)1 489 3961-7

[mail@szabo-scandic.com](mailto:mail@szabo-scandic.com)

[www.szabo-scandic.com](http://www.szabo-scandic.com)

[linkedin.com/company/szaboscandic](https://www.linkedin.com/company/szaboscandic) 

## BTC MaxPab mouse polyclonal antibody (B02) MaxPab®

Catalog # : H00000685-B02

規格 : [ 50 uL ]

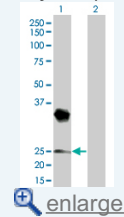
[List All](#)

### Specification

<b>Product Description:</b>	Mouse polyclonal antibody raised against a full-length human BTC protein.
<b>Immunogen:</b>	BTC (NP_001720, 1 a.a. ~ 178 a.a) full-length human protein.
<b>Sequence:</b>	MDRAARCSGASSLPLLLALALGLVILHCVVADGNSTRSPETNGLLCGDP EENCAATTTQSKRKGHF SRCPKQYKHYCIKGRCRFWAEQTPSCVCDE GYIGARCERVDLFLYLRGDRGQILVICLIAMVVFILVIGVCTCCHPLRKRR KRKKKEEEMETLGKDITPINEDIEETNIA
<b>Host:</b>	Mouse
<b>Reactivity:</b>	Human
<b>Quality Control Testing:</b>	Antibody reactive against mammalian transfected lysate.
<b>Storage Buffer:</b>	No additive
<b>Storage Instruction:</b>	Store at -20°C or lower. Aliquot to avoid repeated freezing and thawing.
<b>Note:</b>	For IHC and IF applications, antibody purification with Protein A will be needed prior to use.
<b>MSDS:</b>	<a href="#">Download</a>
<b>Datasheet:</b>	<a href="#">Download</a>

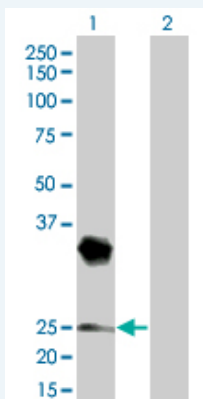
### Application Image

Western Blot (Transfected lysate)



### Applications

#### Western Blot (Transfected lysate)



Western Blot analysis of BTC expression in transfected 293T cell line (H00000685-T01) by BTC MaxPab polyclonal antibody.

Lane 1: BTC transfected lysate(19.58 KDa).

Lane 2: Non-transfected lysate.

[Protocol Download](#)

## Gene Information

Entrez GeneID: [685](#)

GeneBank Accession#: [NM\\_001729](#)

Protein Accession#: [NP\\_001720](#)

Gene Name: BTC

Gene Alias: -

Gene Description: betacellulin

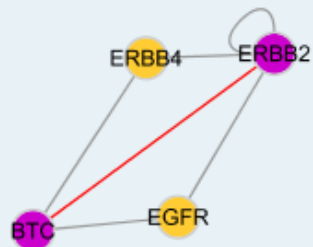
Omim ID: [600345](#)

Gene Ontology: [Hyperlink](#)

**Gene Summary:** The protein encoded by this gene is a member of the EGF family of growth factors. It is synthesized primarily as a transmembrane precursor, which is then processed to mature molecule by proteolytic events. This protein is a ligand for the EGF receptor. [provided by RefSeq]

Other Designations: [OTTHUMP00000160600](#)

## Interactome



## Gene Pathway

[ErbB signaling pathway](#)

## Related Disease

[Diabetes Mellitus, Type 1](#) [Diabetes Mellitus, Type 2](#) [Genetic Predisposition to Disease](#)  
[Obesity](#)

