



SZABO SCANDIC

Part of Europa Biosite

Produktinformation



Forschungsprodukte & Biochemikalien



Zellkultur & Verbrauchsmaterial



Diagnostik & molekulare Diagnostik



Laborgeräte & Service

Weitere Information auf den folgenden Seiten!
See the following pages for more information!



Lieferung & Zahlungsart

siehe unsere [Liefer- und Versandbedingungen](#)

Zuschläge

- Mindermengenzuschlag
- Trockeneiszuschlag
- Gefahrgutzuschlag
- Expressversand

SZABO-SCANDIC HandelsgmbH

Quellenstraße 110, A-1100 Wien

T. +43(0)1 489 3961-0

F. +43(0)1 489 3961-7

mail@szabo-scandic.com

www.szabo-scandic.com

[linkedin.com/company/szaboscandic](https://www.linkedin.com/company/szaboscandic) 

BTC 293T Cell Transient Overexpression Lysate(Denatured)

Catalog # : H00000685-T02

規格 : [100 uL]

[List All](#)

Specification

Transfected Cell Line: 293T

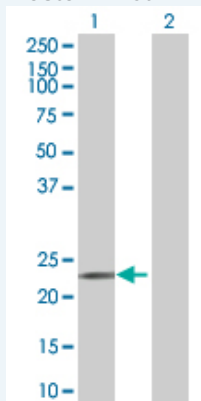
Plasmid: pCMV-BTC full-length

Host: Human

Theoretical MW (kDa): 19.69

Quality Control Testing: Transient overexpression cell lysate was tested with Anti-BTC antibody (H00000685-B01) by Western Blots.

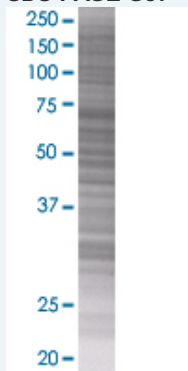
Western Blot



Lane 1: BTC transfected lysate (19.58 KDa)

Lane 2: Non-transfected lysate.

SDS-PAGE Gel



BTC transfected lysate.

Storage Buffer: 1X Sample Buffer (50 mM Tris-HCl, 2% SDS, 10% glycerol, 300 mM 2-mercaptoethanol, 0.01% Bromophenol blue)

Storage Instruction: Store at -80°C. Aliquot to avoid repeated freezing and thawing.

MSDS:  [Download](#)

Applications

Application Image

Western Blot

Western Blot

Gene Information

Entrez GeneID: [685](#)

GeneBank [BC011618](#)
Accession#:

Protein [AAH11618](#)
Accession#:

Gene Name: BTC

Gene Alias: -

Gene Description: betacellulin

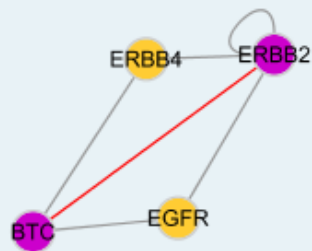
Omim ID: [600345](#)

Gene Ontology: [Hyperlink](#)

Gene Summary: The protein encoded by this gene is a member of the EGF family of growth factors. It is synthesized primarily as a transmembrane precursor, which is then processed to mature molecule by proteolytic events. This protein is a ligand for the EGF receptor. [provided by RefSeq]

Other Designations: OTTHUMP00000160600

Interactome



Gene Pathway

[ErbB signaling pathway](#)

Related Disease

[Diabetes Mellitus, Type 1](#) [Diabetes Mellitus, Type 2](#) [Genetic Predisposition to Disease](#)
[Obesity](#)

