



SZABO SCANDIC

Part of Europa Biosite

Produktinformation



Forschungsprodukte & Biochemikalien



Zellkultur & Verbrauchsmaterial



Diagnostik & molekulare Diagnostik



Laborgeräte & Service

Weitere Information auf den folgenden Seiten!
See the following pages for more information!



Lieferung & Zahlungsart

siehe unsere [Liefer- und Versandbedingungen](#)

Zuschläge

- Mindermengenzuschlag
- Trockeneiszuschlag
- Gefahrgutzuschlag
- Expressversand

SZABO-SCANDIC HandelsgmbH

Quellenstraße 110, A-1100 Wien

T. +43(0)1 489 3961-0

F. +43(0)1 489 3961-7

mail@szabo-scandic.com

www.szabo-scandic.com

[linkedin.com/company/szaboscandic](https://www.linkedin.com/company/szaboscandic) 

KLF5 polyclonal antibody (A01)

Catalog # : H00000688-A01

規格 : [50 uL]

[List All](#)

Specification

Product Description: Mouse polyclonal antibody raised against a partial recombinant KLF5.

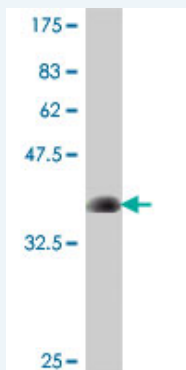
Immunogen: KLF5 (NP_001721, 358 a.a. ~ 457 a.a) partial recombinant protein with GST tag.

Sequence: RYNRRSNPDLEKRRIHYCDYPGCTKVYTKSSHLKAHLRTHTEKPYKCT
WEGCDWRFARSDLTRHYRKHTGAKPFQCGVCNRSFSRSDHLALHMK
RHQN

Host: Mouse

Reactivity: Human

Quality Control Testing: Antibody Reactive Against Recombinant Protein.



Western Blot detection against Immunogen (37.11 kDa) .

Storage Buffer: 50 % glycerol

Storage Instruction: Store at -20°C or lower. Aliquot to avoid repeated freezing and thawing.

MSDS: [Download](#)

Datasheet: [Download](#)

Applications

Western Blot (Recombinant protein)

[Protocol Download](#)

ELISA

Gene Information

Entrez GeneID: [688](#)

GeneBank Accession#: [NM_001730](#)

Application Image

Western Blot (Recombinant protein)

ELISA

Protein Accession#: [NP_001721](#)

Gene Name: KLF5

Gene Alias: BTEB2,CKLF,IKLF

Gene Description: Kruppel-like factor 5 (intestinal)

Omim ID: [602903](#)

Gene Ontology: [Hyperlink](#)

Gene Summary: This gene encodes a member of the Kruppel-like factor subfamily of zinc finger proteins. Since the protein localizes to the nucleus and binds the epidermal growth factor response element, it is thought to be a transcription factor. [provided by RefSeq]

Other Designations: GC box binding protein 2,Kruppel-like factor 5,OTTHUMP00000018502,basic transcription element binding protein 2,colon kruppel-like factor,intestinal-enriched kruppel-like factor,transcription factor BTEB2

Related Disease

[Alzheimer Disease](#) [Alzheimer disease](#) [Atherosclerosis](#) [Cardiovascular Diseases](#)
[Diabetes Complications](#) [Diabetes Mellitus, Type 2](#) [Genetic Predisposition to Disease](#)
[Hypertension](#) [Metabolic Syndrome X](#) [Neoplasms](#) [Osteoporosis](#) [Schizophrenia](#)
[Schizophrenia](#)

[服務條款](#) | [隱私權政策](#) | [著作及商標](#) | [網站地圖](#)

©2016 亞諾法生技股份有限公司 Abnova Corporation. 版權所有.