



SZABO SCANDIC

Part of Europa Biosite

Produktinformation



Forschungsprodukte & Biochemikalien



Zellkultur & Verbrauchsmaterial



Diagnostik & molekulare Diagnostik



Laborgeräte & Service

Weitere Information auf den folgenden Seiten!
See the following pages for more information!



Lieferung & Zahlungsart

siehe unsere [Liefer- und Versandbedingungen](#)

Zuschläge

- Mindermengenzuschlag
- Trockeneiszuschlag
- Gefahrgutzuschlag
- Expressversand

SZABO-SCANDIC HandelsgmbH

Quellenstraße 110, A-1100 Wien

T. +43(0)1 489 3961-0

F. +43(0)1 489 3961-7

mail@szabo-scandic.com

www.szabo-scandic.com

[linkedin.com/company/szaboscandic](https://www.linkedin.com/company/szaboscandic) 

KLF5 purified MaxPab mouse polyclonal antibody (B01P) MaxPab®

Catalog # : H00000688-B01P

規格 : [50 ug]

[List All](#)

Specification

Product Description: Mouse polyclonal antibody raised against a full-length human KLF5 protein.

Immunogen: KLF5 (ABM84666.1, 1 a.a. ~ 457 a.a) full-length human protein.

Sequence:
 MATRVLSMSARLGPVQPPAPQDEPVFAQLKPVLGAANPARDAALFPG
 EELKHAHHRPQAQAPAPAQAPQAQPPATGPRLPPEDLVQTRCEMEKYL
 TPQLPPVPIIPEHKKYRRDSASVVDQFFTDTEGLPYSINMNVFLPDITHLR
 TGLYKSQRPCVTHIKTEPVAFSHQSETTAPPPAPTQALPEFTSIFSSHQT
 AAPEVNNIFIKQELPTPDLHLSVPTQQGHLYQLLNTPLDMPSSSTNQTAA
 MDTLNVMSAAMAGLNTHTSAVPQTAVKQFQGMPPCTYTMPSQFLPQ
 QATYFPPSPSSSEPGSPDRQAEMLQNLTPPPSYAATIASKLAIHNPMLPT
 TLPVNSQNIQPVRYNRRSNPDLEKRRIHYCDYPGCTKVYTESHLKAHLR
 THTGEKPYKCTWEGCDWRFARSDDELTRHYRKHTGAKPFQCGVCNRSF
 SRSDHLALHMKRHQN

Host: Mouse

Reactivity: Human

Quality Control Testing: Antibody reactive against mammalian transfected lysate.

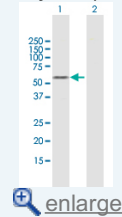
Storage Buffer: In 1x PBS, pH 7.4


Storage Instruction: Store at -20°C or lower. Aliquot to avoid repeated freezing and thawing.

Datasheet:  [Download](#)

Application Image

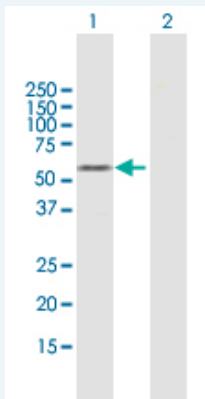
Western Blot (Transfected lysate)



 [enlarge](#)

Applications

Western Blot (Transfected lysate)



Western Blot analysis of KLF5 expression in transfected 293T cell line (H00000688-T01) by KLF5 MaxPab polyclonal antibody.

Lane 1: KLF5 transfected lysate(50.27 KDa).
 Lane 2: Non-transfected lysate.

 [Protocol Download](#)

Gene Information

Entrez GeneID: [688](#)

**GeneBank
Accession#:** [DQ893740.2](#)

**Protein
Accession#:** [ABM84666.1](#)

Gene Name: KLF5

Gene Alias: BTEB2,CKLF,IKLF

**Gene
Description:** Kruppel-like factor 5 (intestinal)

Omim ID: [602903](#)

Gene Ontology: [Hyperlink](#)

Gene Summary: This gene encodes a member of the Kruppel-like factor subfamily of zinc finger proteins. Since the protein localizes to the nucleus and binds the epidermal growth factor response element, it is thought to be a transcription factor. [provided by RefSeq]

**Other
Designations:** GC box binding protein 2,Kruppel-like factor 5,OTTHUMP00000018502,basic transcription element binding protein 2,colon kruppel-like factor,intestinal-enriched kruppel-like factor,transcription factor BTEB2

Related Disease

[Alzheimer Disease](#) [Alzheimer disease](#) [Atherosclerosis](#) [Cardiovascular Diseases](#)
[Diabetes Complications](#) [Diabetes Mellitus, Type 2](#) [Genetic Predisposition to Disease](#)
[Hypertension](#) [Metabolic Syndrome X](#) [Neoplasms](#) [Osteoporosis](#) [Schizophrenia](#)
[Schizophrenia](#)

[服務條款](#) | [隱私權政策](#) | [著作及商標](#) | [網站地圖](#)

©2016 亞諾法生技股份有限公司 Abnova Corporation. 版權所有.