



SZABO SCANDIC

Part of Europa Biosite

Produktinformation



Forschungsprodukte & Biochemikalien



Zellkultur & Verbrauchsmaterial



Diagnostik & molekulare Diagnostik



Laborgeräte & Service

Weitere Information auf den folgenden Seiten!
See the following pages for more information!



Lieferung & Zahlungsart

siehe unsere [Liefer- und Versandbedingungen](#)

Zuschläge

- Mindermengenzuschlag
- Trockeneiszuschlag
- Gefahrgutzuschlag
- Expressversand

SZABO-SCANDIC HandelsgmbH

Quellenstraße 110, A-1100 Wien

T. +43(0)1 489 3961-0

F. +43(0)1 489 3961-7

mail@szabo-scandic.com

www.szabo-scandic.com

[linkedin.com/company/szaboscandic](https://www.linkedin.com/company/szaboscandic) 

BUB1B monoclonal antibody (M01), clone 2G9

Catalog # : H00000701-M01

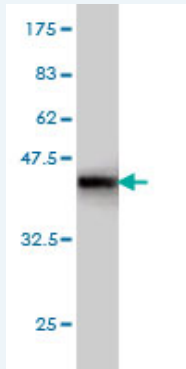
規格 : [100 ug]

[List All](#)

Specification

Product Description:	Mouse monoclonal antibody raised against a partial recombinant BUB1B.
Immunogen:	BUB1B (AAH18739, 1 a.a. ~ 130 a.a) partial recombinant protein with GST tag. MW of the GST tag alone is 26 KDa.
Sequence:	MAAVKKEGGALSEAMSLEGDEWELSKENVQPLRQGRIMSTLQGALAQE SACNNTLQQQKRAFEYEIRFYTGNDPLDVWDYISWTEQNYPPQGGKES NMSTLLERAVEALQGEKRYSDPRFLNLWLKLGR
Host:	Mouse
Reactivity:	Human
Isotype:	IgG1 Kappa

Quality Control Testing: Antibody Reactive Against Recombinant Protein.



Western Blot detection against Immunogen (39.93 KDa) .

Storage Buffer: In 1x PBS, pH 7.4

Storage Instruction: Store at -20°C or lower. Aliquot to avoid repeated freezing and thawing.

MSDS: [Download](#)

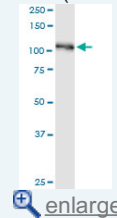
Datasheet: [Download](#)

Applications

Western Blot (Tissue lysate)

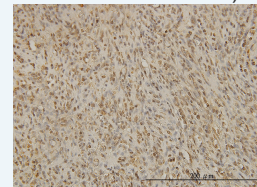
Application Image

Western Blot (Tissue lysate)



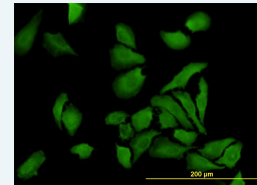
Western Blot (Recombinant protein)

Immunohistochemistry
(Formalin/PFA-fixed paraffin-embedded sections)



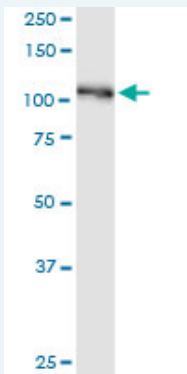
[enlarge](#)

Immunofluorescence



[enlarge](#)

ELISA



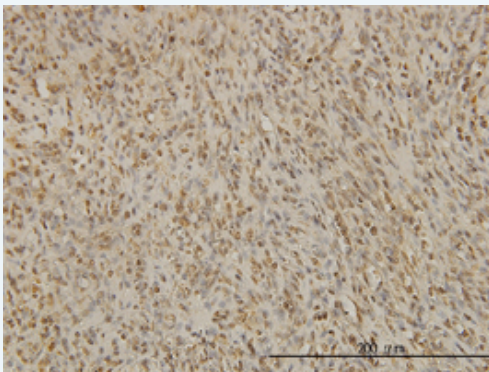
BUB1B monoclonal antibody (M01), clone 2G9. Western Blot analysis of BUB1B expression in human spleen.

 [Protocol Download](#)

Western Blot (Recombinant protein)

 [Protocol Download](#)

Immunohistochemistry (Formalin/PFA-fixed paraffin-embedded sections)

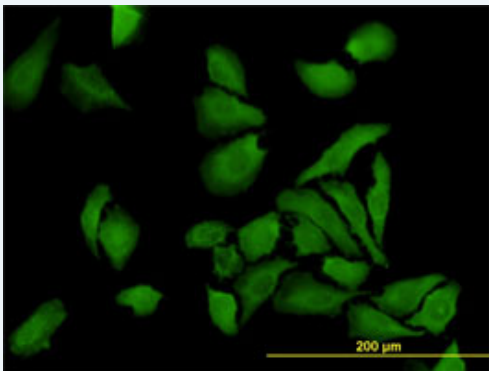



 [enlarge this image](#)

Immunoperoxidase of monoclonal antibody to BUB1B on formalin-fixed paraffin-embedded human spleen. [antibody concentration 1 ug/ml]

 [Protocol Download](#)

Immunofluorescence



 [enlarge this image](#)

Immunofluorescence of monoclonal antibody to BUB1B on HeLa cell. [antibody concentration 10 ug/ml]

 [Protocol Download](#)

ELISA

Gene Information

Entrez GeneID: [701](#)

GeneBank [BC018739](#)

Accession#:

Protein [AAH18739](#)

Accession#:

Gene Name: BUB1B

Gene Alias: BUB1beta,BUBR1,Bub1A,MAD3L,SSK1,hBUBR1

Gene Description: budding uninhibited by benzimidazoles 1 homolog beta (yeast)

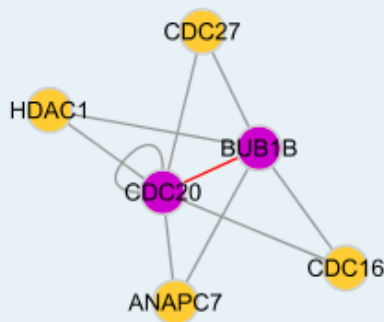
Omim ID: [114500](#), [602860](#)

Gene Ontology: [Hyperlink](#)

Gene Summary: This gene encodes a kinase involved in spindle checkpoint function. The protein has been localized to the kinetochore and plays a role in the inhibition of the anaphase-promoting complex/cyclosome (APC/C), delaying the onset of anaphase and ensuring proper chromosome segregation. Impaired spindle checkpoint function has been found in many forms of cancer. [provided by RefSeq]

Other Designations: BUB1 budding uninhibited by benzimidazoles 1 homolog beta,MAD3/BUB1-related protein kinase,budding uninhibited by benzimidazoles 1, beta

Interactome



Gene Pathway

[Cell cycle](#)

Related Disease

[Adenocarcinoma](#) [Breast cancer](#) [Breast Neoplasms](#) [Carcinoma, Ductal, Breast](#) [Esophageal Neoplasms](#) [Genetic Predisposition to Disease](#) [Kidney Failure, Chronic](#) [Lung Neoplasms](#) [Pulmonary Disease, Chronic Obstructive](#)