



SZABO SCANDIC

Part of Europa Biosite

Produktinformation



Forschungsprodukte & Biochemikalien



Zellkultur & Verbrauchsmaterial



Diagnostik & molekulare Diagnostik



Laborgeräte & Service

Weitere Information auf den folgenden Seiten!
See the following pages for more information!



Lieferung & Zahlungsart

siehe unsere [Liefer- und Versandbedingungen](#)

Zuschläge

- Mindermengenzuschlag
- Trockeneiszuschlag
- Gefahrgutzuschlag
- Expressversand

SZABO-SCANDIC HandelsgmbH

Quellenstraße 110, A-1100 Wien

T. +43(0)1 489 3961-0

F. +43(0)1 489 3961-7

mail@szabo-scandic.com

www.szabo-scandic.com

[linkedin.com/company/szaboscandic](https://www.linkedin.com/company/szaboscandic) 

BYSL purified MaxPab mouse polyclonal antibody (B02P) MaxPab®

Catalog # : H00000705-B02P

規格 : [50 ug]

[List All](#)

Specification

Product Description: Mouse polyclonal antibody raised against a full-length human BYSL protein.

Immunogen: BYSL (NP_004044.3, 1 a.a. ~ 437 a.a) full-length human protein.

Sequence:
 MPKFKAARGVGGQEKHAPLADQILAGNAVRAGVREKRRGRGTGEAEEE
 YVGPRLSRRILQQARQQQEELAEHGTGDKPAAPRERTTRLGPRMPQD
 GSDDEDEEWPTLEKAATMTAAGHHAEEVVDPEDERAIEFMNKNPPAR
 RTLADIIMEKLTEKQTEVETVMSEVSGFPMPQLDPRVLEVYRQVREVL
 SKYRSGKLPKAFKIIPALSNWEQILYVTEPEAWTAAAMYQATRIFASNLKERM
 AQRFYNLVLLPRVRDDVAEYKRLNFHLYMALKKALFKPGAWFKGILPLC
 ESGTCTLREAIIVGSIITKCSIPVLHSSAAMLKIAEMEYSGANSIFLRLLLDKK
 YALPYRVLDALVFHFLGFRTEKRELPVLWHQCLLTLVQRYKADLATDQK
 EALLELLRLQHPQLSPEIRRELQSAVPRDVEDVPITVE

Host: Mouse

Reactivity: Human

Quality Control Testing: Antibody reactive against mammalian transfected lysate.

Storage Buffer: In 1x PBS, pH 7.4

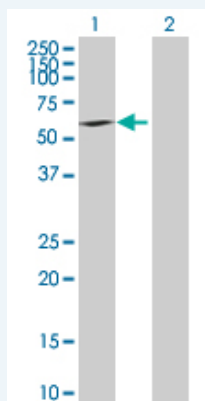
Storage Instruction: Store at -20°C or lower. Aliquot to avoid repeated freezing and thawing.

MSDS: [Download](#)

Datasheet: [Download](#)

Applications

Western Blot (Transfected lysate)



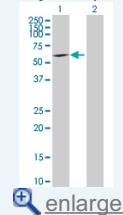
Western Blot analysis of BYSL expression in transfected 293T cell line ([H00000705-T02](#)) by BYSL MaxPab polyclonal antibody.

Lane 1: BYSL transfected lysate(48.07 KDa).

Lane 2: Non-transfected lysate.

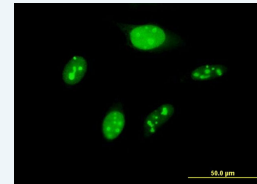
Application Image

Western Blot (Transfected lysate)



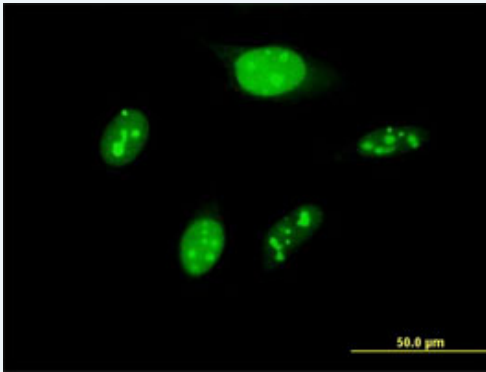
[enlarge](#)

Immunofluorescence



[enlarge](#)

Immunofluorescence



 enlarge this image

Immunofluorescence of purified MaxPab antibody to BYSL on HeLa cell. [antibody concentration 10 ug/ml]

Gene Information

Entrez GeneID: [705](#)

GeneBank Accession#: [NM_004053.3](#)

Protein Accession#: [NP_004044.3](#)

Gene Name: BYSL

Gene Alias: BYSTIN

Gene Description: bystin-like

Omim ID: [603871](#)

Gene Ontology: [Hyperlink](#)

Gene Summary: Bystin is expressed as a 2-kb major transcript and a 3.6-kb minor transcript in SNG-M cells and in human trophoblastic teratocarcinoma HT-H cells. Protein binding assays determined that bystin binds directly to trophinin and tastin, and that binding is enhanced when cytokeratins 8 and 18 are present. Immunocytochemistry of HT-H cells showed that bystin colocalizes with trophinin, tastin, and the cytokeratins, suggesting that these molecules form a complex in trophoblast cells at the time of implantation. Using immunohistochemistry it was determined that trophinin and bystin are found in the placenta from the sixth week of pregnancy. Both proteins were localized in the cytoplasm of the syncytiotrophoblast in the chorionic villi and in endometrial decidual cells at the uteroplacental interface. After week 10, the levels of trophinin, tastin, and bystin decreased and then disappeared from placental villi. [provided by RefSeq]

Other Designations: OTTHUMP00000039776,by the ribosomal protein s6 gene, drosophila, homolog-like,bystin

Related Disease

[Kidney Failure, Chronic](#)

