



# SZABO SCANDIC

Part of Europa Biosite

## Produktinformation



Forschungsprodukte & Biochemikalien



Zellkultur & Verbrauchsmaterial



Diagnostik & molekulare Diagnostik



Laborgeräte & Service

Weitere Information auf den folgenden Seiten!  
See the following pages for more information!



### Lieferung & Zahlungsart

siehe unsere [Liefer- und Versandbedingungen](#)

### Zuschläge

- Mindermengenzuschlag
- Trockeneiszuschlag
- Gefahrgutzuschlag
- Expressversand

### SZABO-SCANDIC HandelsgmbH

Quellenstraße 110, A-1100 Wien

T. +43(0)1 489 3961-0

F. +43(0)1 489 3961-7

[mail@szabo-scandic.com](mailto:mail@szabo-scandic.com)

[www.szabo-scandic.com](http://www.szabo-scandic.com)

[linkedin.com/company/szaboscandic](https://www.linkedin.com/company/szaboscandic) 

## C1QBP MaxPab rabbit polyclonal antibody (D01) MaxPab®

Catalog # : H00000708-D01

規格 : [ 100 uL ]

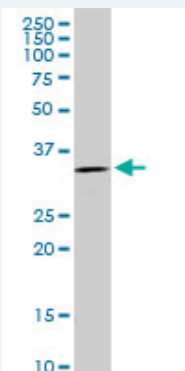
[List All](#)

### Specification

<b>Product Description:</b>	Rabbit polyclonal antibody raised against a full-length human C1QBP protein.
<b>Immunogen:</b>	C1QBP (NP_001203.1, 1 a.a. ~ 282 a.a) full-length human protein.
<b>Sequence:</b>	MLPLLRCVPRVLGSSVAGLRAAAPSPFRQLLQPAPRLCTRPFGLLSVR AGSERRPGLLRPRGPCACGCGSLHTDGDKAFVDFLSDEIKEERKIQK HKTLPKMSGGWELELNGTEAKLVRKVAGEKITVTFNINNSIPPTFDGEEE PSQGQKVEEQEPELTSTPNFWEVIKNDGKALVLDCHYPEDEVGQED EAESDIFSIREVSFQSTGESEWKDTNYTLNTDSLWALYDHLMDFLADR GVDNTFADELVELSTALEHQEYITFLEDLKSFKVKSQ
<b>Host:</b>	Rabbit
<b>Reactivity:</b>	Human
<b>Quality Control Testing:</b>	Antibody reactive against mammalian transfected lysate.
<b>Storage Buffer:</b>	No additive
<b>Storage Instruction:</b>	Store at -20°C or lower. Aliquot to avoid repeated freezing and thawing.
<b>MSDS:</b>	<a href="#">Download</a>
<b>Datasheet:</b>	<a href="#">Download</a>

### Applications

#### Western Blot (Cell lysate)



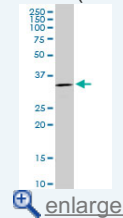
C1QBP MaxPab rabbit polyclonal antibody. Western Blot analysis of C1QBP expression in Hela S3 NE.

[Protocol Download](#)

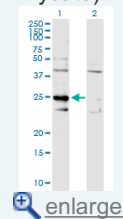
#### Western Blot (Transfected lysate)

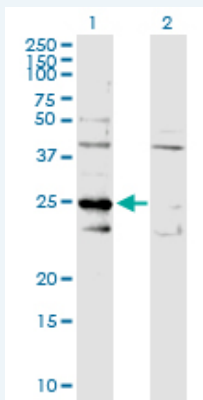
### Application Image

#### Western Blot (Cell lysate)



#### Western Blot (Transfected lysate)





Western Blot analysis of C1QBP expression in transfected 293T cell line (H00000708-T01) by C1QBP MaxPab polyclonal antibody.

Lane 1: C1QBP transfected lysate(31.40 KDa).  
Lane 2: Non-transfected lysate.

 Protocol Download

## Gene Information

Entrez GeneID: [708](#)

GeneBank [NM\\_001212](#)  
Accession#:

Protein [NP\\_001203.1](#)  
Accession#:

Gene Name: C1QBP

Gene Alias: GC1QBP,HABP1,SF2p32,gC1Q-R,gC1qR,p32

Gene Description: complement component 1, q subcomponent binding protein

Omim ID: [601269](#)

Gene Ontology: [Hyperlink](#)

**Gene Summary:** The human complement subcomponent C1q associates with C1r and C1s in order to yield the first component of the serum complement system. The protein encoded by this gene is known to bind to the globular heads of C1q molecules and inhibit C1 activation. This protein has also been identified as the p32 subunit of pre-mRNA splicing factor SF2, as well as a hyaluronic acid-binding protein. [provided by RefSeq]

**Other Designations:** C1q globular domain-binding protein,hyaluronan-binding protein 1,splicing factor SF2-associated protein

## Related Disease

[Birth Weight](#) [Cardiovascular Diseases](#) [Diabetes Mellitus, Type 2](#) [Edema](#)  
[Genetic Predisposition to Disease](#) [Glioblastoma](#) [Glioma](#) [Leukemia](#)  
[Leukemia, Myeloid, Acute](#) [Meningeal Neoplasms](#) [Meningioma](#)