



SZABO SCANDIC

Part of Europa Biosite

Produktinformation



Forschungsprodukte & Biochemikalien



Zellkultur & Verbrauchsmaterial



Diagnostik & molekulare Diagnostik



Laborgeräte & Service

Weitere Information auf den folgenden Seiten!
See the following pages for more information!



Lieferung & Zahlungsart

siehe unsere [Liefer- und Versandbedingungen](#)

Zuschläge

- Mindermengenzuschlag
- Trockeneiszuschlag
- Gefahrgutzuschlag
- Expressversand

SZABO-SCANDIC HandelsgmbH

Quellenstraße 110, A-1100 Wien

T. +43(0)1 489 3961-0

F. +43(0)1 489 3961-7

mail@szabo-scandic.com

www.szabo-scandic.com

[linkedin.com/company/szaboscandic](https://www.linkedin.com/company/szaboscandic) 

SERPING1 polyclonal antibody (A01)

Catalog # : H00000710-A01

規格 : [50 uL]

[List All](#)

Specification

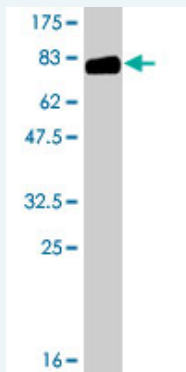
Product Description:	Mouse polyclonal antibody raised against a full-length recombinant SERPING1.
Immunogen:	SERPING1 (AAH11171, 1 a.a. ~ 500 a.a) full-length recombinant protein with GST tag.
Sequence:	MASRLTLLTLLLLLAGDRASSNPATSSSSQDPESLQDRGEGKVATTVI SKMLFVEPILEVSSLPTTNSTTNSATKITANTTDEPTTQPTTEPTTQPTIQ PTQPTTQLPTDSPTQPTTGSFCGPGVTLCSDELHSTEAVLGDALVDFS LKLYHAFSAMKKVETNMAFSPFSIASLLTQVLLGAGENTKTNLESILSYPK DFTCVHQALKGF TTKGVT SVSQIFHSPDLAIRDTFVNASRTLYSSSPRVL SNNSDANLELINTWAKNTNNKISRLLDSLPSDTRLVLLNAIYLSAKWKTF DPKKT RMEPFHFKN SVIKVPMNSKYPVAHFIDQTLKAKVGQLQLSHNL SLVILVPQNLKHRLEDMEQALSPSVFKAIMEKLEMSKFQPTLLTLPRIKVT TSQDMLSIMEKLEFFDFSYDLNLCGLTEDPDLQVSAMQHQT VLELTETG VEAAAASAVISVARTLLVFEVQQPFLFMLWDQQHKFPVFMGRVYDPRA
Host:	Mouse
Reactivity:	Human

Application Image

Western Blot (Recombinant protein)

ELISA

Quality Control Testing: Antibody Reactive Against Recombinant Protein.



Western Blot detection against Immunogen (81.11 kDa) .

Storage Buffer: 50 % glycerol

Storage Instruction: Store at -20°C or lower. Aliquot to avoid repeated freezing and thawing.

MSDS: [Download](#)

Datasheet: [Download](#)

Applications

Western Blot (Recombinant protein)

[Protocol Download](#)

ELISA

Gene Information

Entrez GeneID: [710](#)

**GeneBank
Accession#:** [BC011171](#)

**Protein
Accession#:** [AAH11171](#)

Gene Name: SERPING1

Gene Alias: C1IN,C1INH,C1NH,HAE1,HAE2

**Gene
Description:** serpin peptidase inhibitor, clade G (C1 inhibitor), member 1

Omim ID: [106100](#), [606860](#)

Gene Ontology: [Hyperlink](#)

Gene Summary: This gene encodes a highly glycosylated plasma protein involved in the regulation of the complement cascade. Its protein inhibits activated C1r and C1s of the first complement component and thus regulates complement activation. Deficiency of this protein is associated with hereditary angioneurotic oedema (HANE). Alternative splicing results in multiple transcript variants encoding the same isoform. [provided by RefSeq]

**Other
Designations:** complement component 1 inhibitor,plasma protease C1 inhibitor,serine/cysteine proteinase inhibitor clade G member 1

Gene Pathway

[Complement and coagulation cascades](#)

Related Disease

[Acute Disease](#) [Birth Weight](#) [Choroid Diseases](#) [Choroidal Neovascularization](#)
[Genetic Predisposition to Disease](#) [Glioblastoma](#) [Glioma](#) [Kidney Failure, Chronic](#) [Leukemia](#)
[Leukemia, Myeloid, Acute](#) [Lymphoma, Non-Hodgkin](#) [Macular Degeneration](#)
[Meningeal Neoplasms](#) [Meningioma](#) [Meningococcal Infections](#) [Otitis Media](#)
[Ovarian Neoplasms](#) [Recurrence](#)

[服務條款](#) | [隱私權政策](#) | [著作及商標](#) | [網站地圖](#)

©2016 亞諾法生技股份有限公司 Abnova Corporation. 版權所有.