



SZABO SCANDIC

Part of Europa Biosite

Produktinformation



Forschungsprodukte & Biochemikalien



Zellkultur & Verbrauchsmaterial



Diagnostik & molekulare Diagnostik



Laborgeräte & Service

Weitere Information auf den folgenden Seiten!
See the following pages for more information!



Lieferung & Zahlungsart

siehe unsere [Liefer- und Versandbedingungen](#)

Zuschläge

- Mindermengenzuschlag
- Trockeneiszuschlag
- Gefahrgutzuschlag
- Expressversand

SZABO-SCANDIC HandelsgmbH

Quellenstraße 110, A-1100 Wien

T. +43(0)1 489 3961-0

F. +43(0)1 489 3961-7

mail@szabo-scandic.com

www.szabo-scandic.com

[linkedin.com/company/szaboscandic](https://www.linkedin.com/company/szaboscandic) 



SERPING1 purified MaxPab rabbit polyclonal antibody (D01P) MaxPab®

Catalog # : H00000710-D01P

規格 : [100 ug]

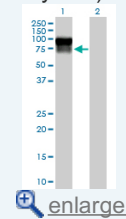
[List All](#)

Specification

Product Description:	Rabbit polyclonal antibody raised against a full-length human SERPING1 protein.
Immunogen:	SERPING1 (AAH11171.1, 1 a.a. ~ 500 a.a) full-length human protein.
Sequence:	MASRLTLLTLLLLLAGDRASSNPATSSSSQDPESLQDRGEGKVATTVI SKMLFVEPILEVSSLPTTNSTTNSATKITANTTDEPTTQPTTEPTTQPTIQ PTQPTTQLPTDSTPTQPTTGSFCPGPVTLCSDLESHSTEAVLGDALVDFS LKLYHAFSAMKKVETNMAFSPFSIASLLTQVLLGAGENTKTNLESILSYPK DFTCVHQALKGFTTKGVTSVSQIFHSPDLAIRDTFVNASRTLYSSSPRVL SNNSDANLELINTWVAKNTNKNISRLDLSLPSDTRLVLLNAIYLSAKWKTTF DPKKT RMEPFHFKNVIVKVPMMNSKKYPVAHFIDQTLKAKVGQLQLSHNL SLVILVPQNLKHRLEDMEQALSPSVFKAIIMEKLEMSKFQPTLLTLPRIKVT TSQDMLSIMEKLEFFDFSYDLNLCGLTEDPDLQVSAMQHQTVLELTETG VEAAAASAISVARTLLVFEVQQPFLFMLWDQQHKFPVFMGRVYDPRA
Host:	Rabbit
Reactivity:	Human
Quality Control Testing:	Antibody reactive against mammalian transfected lysate.
Storage Buffer:	In 1x PBS, pH 7.4
Storage Instruction:	Store at -20°C or lower. Aliquot to avoid repeated freezing and thawing.
MSDS:	 Download
Datasheet:	 Download

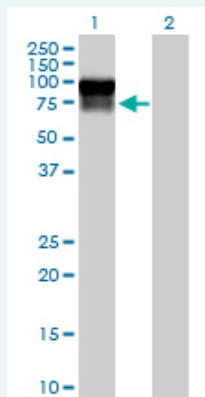
Application Image

Western Blot (Transfected lysate)



Applications

Western Blot (Transfected lysate)



Western Blot analysis of SERPING1 expression in transfected 293T cell line (H00000710-T01) by SERPING1 MaxPab polyclonal antibody.

Lane 1: SERPING1 transfected lysate(55.20 KDa).
Lane 2: Non-transfected lysate.

Gene Information

Entrez GeneID: [710](#)

GeneBank Accession#: [BC011171.2](#)

Protein Accession#: [AAH11171.1](#)

Gene Name: SERPING1

Gene Alias: C1IN,C1INH,C1NH,HAE1,HAE2

Gene Description: serpin peptidase inhibitor, clade G (C1 inhibitor), member 1

Omim ID: [106100](#), [606860](#)

Gene Ontology: [Hyperlink](#)

Gene Summary: This gene encodes a highly glycosylated plasma protein involved in the regulation of the complement cascade. Its protein inhibits activated C1r and C1s of the first complement component and thus regulates complement activation. Deficiency of this protein is associated with hereditary angioneurotic oedema (HANE). Alternative splicing results in multiple transcript variants encoding the same isoform. [provided by RefSeq]

Other Designations: complement component 1 inhibitor,plasma protease C1 inhibitor,serine/cysteine proteinase inhibitor clade G member 1

Gene Pathway

[Complement and coagulation cascades](#)

Related Disease

[Acute Disease](#) [Birth Weight](#) [Choroid Diseases](#) [Choroidal Neovascularization](#) [Genetic Predisposition to Disease](#) [Glioblastoma](#) [Glioma](#) [Kidney Failure](#), [Chronic Leukemia](#) [Leukemia, Myeloid](#), [Acute Lymphoma](#), [Non-Hodgkin Macular Degeneration](#) [Meningeal Neoplasms](#) [Meningioma](#) [Meningococcal Infections](#) [Otitis Media](#) [Ovarian Neoplasms](#) [Recurrence](#)