



SZABO SCANDIC

Part of Europa Biosite

Produktinformation



Forschungsprodukte & Biochemikalien



Zellkultur & Verbrauchsmaterial



Diagnostik & molekulare Diagnostik



Laborgeräte & Service

Weitere Information auf den folgenden Seiten!
See the following pages for more information!



Lieferung & Zahlungsart

siehe unsere [Liefer- und Versandbedingungen](#)

Zuschläge

- Mindermengenzuschlag
- Trockeneiszuschlag
- Gefahrgutzuschlag
- Expressversand

SZABO-SCANDIC HandelsgmbH

Quellenstraße 110, A-1100 Wien

T. +43(0)1 489 3961-0

F. +43(0)1 489 3961-7

mail@szabo-scandic.com

www.szabo-scandic.com

[linkedin.com/company/szaboscandic](https://www.linkedin.com/company/szaboscandic) 

CALCA monoclonal antibody (M01), clone 4B10

Catalog # : H00000796-M01

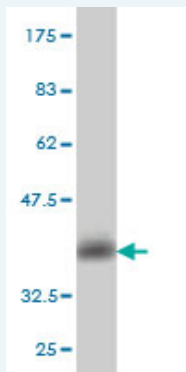
規格 : [100 ug]

List All

Specification

Product Description:	Mouse monoclonal antibody raised against a partial recombinant CALCA.
Immunogen:	CALCA (NP_001732, 52 a.a. ~ 141 a.a) partial recombinant protein with GST tag. MW of the GST tag alone is 26 KDa.
Sequence:	AALVQDYVQMKASELEQEEREGSSLDSPRSKRKCGNLSTCMLGTYTQ DFNKFHTFPQTAIGVGAPGKKRDMSSDLERDHRPHVSMQPQAN
Host:	Mouse
Reactivity:	Human
Isotype:	IgG2a Kappa

Quality Control Testing: Antibody Reactive Against Recombinant Protein.



Western Blot detection against Immunogen (35.64 KDa) .

Storage Buffer: In 1x PBS, pH 7.4

Storage Instruction: Store at -20°C or lower. Aliquot to avoid repeated freezing and thawing.

MSDS: [Download](#)

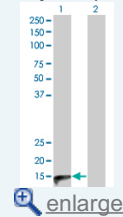
Datasheet: [Download](#)

Applications

Western Blot (Transfected lysate)

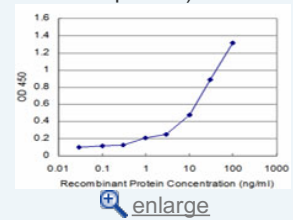
Application Image

Western Blot (Transfected lysate)

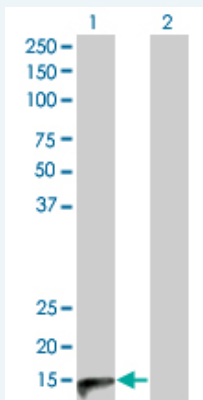


Western Blot (Recombinant protein)

Sandwich ELISA (Recombinant protein)



ELISA



Western Blot analysis of CALCA expression in transfected 293T cell line by CALCA monoclonal antibody (M01), clone 4B10.

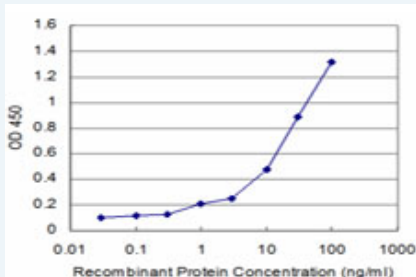
Lane 1: CALCA transfected lysate(15.5 KDa).
Lane 2: Non-transfected lysate.

[Protocol Download](#)

Western Blot (Recombinant protein)

[Protocol Download](#)

Sandwich ELISA (Recombinant protein)



Detection limit for recombinant GST tagged CALCA is approximately 1ng/ml as a capture antibody.

[Protocol Download](#)

ELISA

Gene Information

Entrez GeneID: [796](#)

GeneBank [NM_001741](#)
Accession#:

Protein [NP_001732](#)
Accession#:

Gene Name: CALCA

Gene Alias: CALC1,CGRP,CGRP-I,CGRP1,CT,KC,MGC126648

Gene Description: calcitonin-related polypeptide alpha

Omim ID: [114130](#)

Gene Ontology: [Hyperlink](#)

Gene Summary: Calcitonin is a peptide hormone synthesized by the parafollicular cells of the thyroid. It causes reduction in serum calcium, an effect opposite to that of parathyroid hormone (PTH; MIM 168450).[supplied by OMIM

Other calcitonin,calcitonin 1,calcitonin/calcitonin-related polypeptide,

Designations: alpha,katacalcin

Gene Pathway

[Vascular smooth muscle contraction](#)

Related Disease

[Bipolar Disorder](#) [Cardiovascular Diseases](#) [Diabetes Mellitus, Type 2](#) [Edema](#)
[Genetic Predisposition to Disease](#) [Hypertension](#) [Mental Disorders](#) [Multiple Organ Failure](#)
[Multiple Trauma](#) [Osteoarthritis, Knee](#) [Osteoporosis, Postmenopausal](#) [Ovarian cancer](#)
[Ovarian Neoplasms](#) [Pain, Postoperative](#) [Parkinson Disease](#) [Parkinson disease](#)
[Postoperative Complications](#) [Prosthesis Failure](#) [Radius Fractures](#)

... see more

[服務條款](#) | [隱私權政策](#) | [著作及商標](#) | [網站地圖](#)

©2016 亞諾法生技股份有限公司 Abnova Corporation. 版權所有.