



# SZABO SCANDIC

Part of Europa Biosite

## Produktinformation



Forschungsprodukte & Biochemikalien



Zellkultur & Verbrauchsmaterial



Diagnostik & molekulare Diagnostik



Laborgeräte & Service

Weitere Information auf den folgenden Seiten!  
See the following pages for more information!



### Lieferung & Zahlungsart

siehe unsere [Liefer- und Versandbedingungen](#)

### Zuschläge

- Mindermengenzuschlag
- Trockeneiszuschlag
- Gefahrgutzuschlag
- Expressversand

### SZABO-SCANDIC HandelsgmbH

Quellenstraße 110, A-1100 Wien

T. +43(0)1 489 3961-0

F. +43(0)1 489 3961-7

[mail@szabo-scandic.com](mailto:mail@szabo-scandic.com)

[www.szabo-scandic.com](http://www.szabo-scandic.com)

[linkedin.com/company/szaboscandic](https://www.linkedin.com/company/szaboscandic) 

## CALCR monoclonal antibody (M01), clone 2F7

Catalog # : H00000799-M01

規格 : [ 100 ug ]

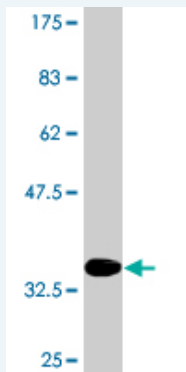
[List All](#)

### Specification

<b>Product Description:</b>	Mouse monoclonal antibody raised against a partial recombinant CALCR.
<b>Immunogen:</b>	CALCR (NP_001733.1, 394 a.a. ~ 474 a.a) partial recombinant protein with GST tag. MW of the GST tag alone is 26 KDa.
<b>Sequence:</b>	CNNEVQTTVKRQWAQFKIQWNQRWGRRPSNRSARAAAAAAEAGDIPIYI CHQELRNEPANNQGEESAEIPLNIEQESSA
<b>Host:</b>	Mouse
<b>Reactivity:</b>	Human
<b>Isotype:</b>	IgG2a Kappa

**Quality Control** Antibody Reactive Against Recombinant Protein.

**Testing:**



Western Blot detection against Immunogen (34.65 KDa) .

**Storage Buffer:** In 1x PBS, pH 7.4

**Storage Instruction:** Store at -20°C or lower. Aliquot to avoid repeated freezing and thawing.

**MSDS:** [Download](#)

**Datasheet:** [Download](#)

### Publication Reference

1. [Identification of the calcitonin receptor in osteoarthritic chondrocytes.](#)  
Segovia-Silvestre T, Bonnefond C, Sondergaard BC, Christensen T, Karsdal MA, Bay-Jensen AC. BMC Res Notes. 2011 Oct 13;4(1):407.

### Applications

**Western Blot (Recombinant protein)**

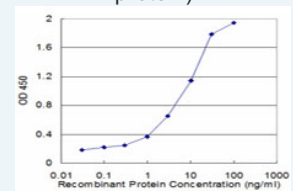
[Protocol Download](#)

**Sandwich ELISA (Recombinant protein)**

### Application Image

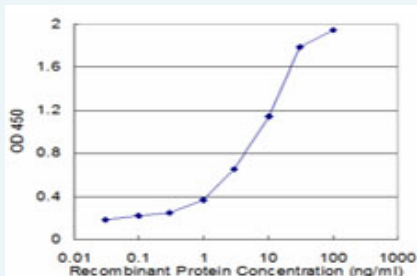
Western Blot (Recombinant protein)

Sandwich ELISA (Recombinant protein)




[enlarge](#)

ELISA



Detection limit for recombinant GST tagged CALCR is approximately 0.03ng/ml as a capture antibody.

 [Protocol Download](#)

## ELISA

### Gene Information

Entrez GeneID: [799](#)

GeneBank [NM\\_001742](#)

Accession#:

Protein [NP\\_001733.1](#)

Accession#:

Gene Name: CALCR

Gene Alias: CRT,CTR,CTR1

Gene Description: calcitonin receptor

Omim ID: [114131](#), [166710](#)

Gene Ontology: [Hyperlink](#)

**Gene Summary:** This gene encodes a high affinity receptor for the peptide hormone calcitonin and belongs to a subfamily of seven transmembrane-spanning G protein-coupled receptors. The encoded protein is involved in maintaining calcium homeostasis and in regulating osteoclast-mediated bone resorption. Polymorphisms in this gene have been associated with variations in bone mineral density and onset of osteoporosis. Alternate splicing results in multiple transcript variants. [provided by RefSeq]

Other [OTTHUMP00000025217](#),[OTTHUMP00000162535](#)

Designations:

### Gene Pathway

[Neuroactive ligand-receptor interaction](#)

### Related Disease

[Alveolar Bone Loss](#) [Alzheimer Disease](#) [Alzheimer disease](#) [Arthritis, Juvenile Rheumatoid](#) [Body Weight](#) [Cardiovascular Diseases](#) [Cystic Fibrosis](#) [Cystic fibrosis](#) [Diabetes Complications](#) [Diabetes Mellitus, Type 2](#) [Edema](#) [Femoral Neck Fractures](#) [Fractures, Stress](#) [Genetic Predisposition to Disease](#) [Hyperparathyroidism, Secondary](#) [Kidney Calculi](#) [Lung Neoplasms](#) [Mandibular Diseases](#) [Maxillary Diseases](#)

... see more

