



SZABO SCANDIC

Part of Europa Biosite

Produktinformation



Forschungsprodukte & Biochemikalien



Zellkultur & Verbrauchsmaterial



Diagnostik & molekulare Diagnostik



Laborgeräte & Service

Weitere Information auf den folgenden Seiten!
See the following pages for more information!



Lieferung & Zahlungsart

siehe unsere [Liefer- und Versandbedingungen](#)

Zuschläge

- Mindermengenzuschlag
- Trockeneiszuschlag
- Gefahrgutzuschlag
- Expressversand

SZABO-SCANDIC HandelsgmbH

Quellenstraße 110, A-1100 Wien

T. +43(0)1 489 3961-0

F. +43(0)1 489 3961-7

mail@szabo-scandic.com

www.szabo-scandic.com

[linkedin.com/company/szaboscandic](https://www.linkedin.com/company/szaboscandic) 

CALCR 293T Cell Transient Overexpression Lysate(Denatured)

Catalog # : H00000799-T02

規格 : [100 uL]

List All

Specification

Transfected Cell Line: 293T

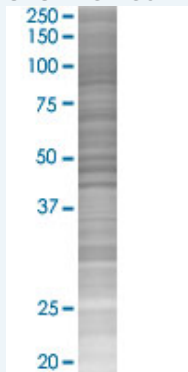
Plasmid: pCMV-CALCR full-length

Host: Human

Theoretical MW (kDa): 55.3

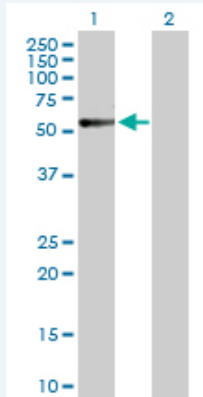
Quality Control Testing: Transient overexpression cell lysate was tested with Anti-CALCR antibody (H00000799-D01P) by Western Blots.

SDS-PAGE Gel



CALCR transfected lysate.

Western Blot



Lane 1: CALCR transfected lysate (55.30 KDa)

Lane 2: Non-transfected lysate.

Storage Buffer: 1X Sample Buffer (50 mM Tris-HCl, 2% SDS, 10% glycerol, 300 mM 2-mercaptoethanol, 0.01% Bromophenol blue)

Storage Instruction: Store at -80°C. Aliquot to avoid repeated freezing and thawing.

MSDS:  [Download](#)

Applications

Western Blot

Gene Information

Entrez GeneID: [799](#)

GeneBank Accession#: [NM_001742](#)

Protein Accession#: [NP_001733.1](#)

Gene Name: CALCR

Gene Alias: CRT,CTR,CTR1

Gene Description: calcitonin receptor

Omim ID: [114131](#), [166710](#)

Gene Ontology: [Hyperlink](#)

Gene Summary: This gene encodes a high affinity receptor for the peptide hormone calcitonin and belongs to a subfamily of seven transmembrane-spanning G protein-coupled receptors. The encoded protein is involved in maintaining calcium homeostasis and in regulating osteoclast-mediated bone resorption. Polymorphisms in this gene have been associated with variations in bone mineral density and onset of osteoporosis. Alternate splicing results in multiple transcript variants. [provided by RefSeq]

Other Designations: OTTHUMP00000025217,OTTHUMP00000162535

Gene Pathway

[Neuroactive ligand-receptor interaction](#)

Related Disease

[Alveolar Bone Loss](#) [Alzheimer Disease](#) [Alzheimer disease](#) [Arthritis](#) [Juvenile Rheumatoid](#)
[Body Weight](#) [Cardiovascular Diseases](#) [Cystic Fibrosis](#) [Cystic fibrosis](#)
[Diabetes Complications](#) [Diabetes Mellitus, Type 2](#) [Edema](#) [Femoral Neck Fractures](#)
[Fractures, Stress](#) [Genetic Predisposition to Disease](#) [Hyperparathyroidism](#) [Secondary](#)
[Kidney Calculi](#) [Lung Neoplasms](#) [Mandibular Diseases](#) [Maxillary Diseases](#)

... see more