



SZABO SCANDIC

Part of Europa Biosite

Produktinformation



Forschungsprodukte & Biochemikalien



Zellkultur & Verbrauchsmaterial



Diagnostik & molekulare Diagnostik



Laborgeräte & Service

Weitere Information auf den folgenden Seiten!
See the following pages for more information!



Lieferung & Zahlungsart

siehe unsere [Liefer- und Versandbedingungen](#)

Zuschläge

- Mindermengenzuschlag
- Trockeneiszuschlag
- Gefahrgutzuschlag
- Expressversand

SZABO-SCANDIC HandelsgmbH

Quellenstraße 110, A-1100 Wien

T. +43(0)1 489 3961-0

F. +43(0)1 489 3961-7

mail@szabo-scandic.com

www.szabo-scandic.com

[linkedin.com/company/szaboscandic](https://www.linkedin.com/company/szaboscandic) 

CALD1 MaxPab mouse polyclonal antibody (B01) MaxPab®

Catalog # : H00000800-B01

規格 : [50 uL]

[List All](#)

Specification

Product Description: Mouse polyclonal antibody raised against a full-length human CALD1 protein.

Immunogen: CALD1 (NP_004333.1, 1 a.a. ~ 538 a.a) full-length human protein.

Sequence:
MDDFERRRELRRQKREEMRLEAERIAQNRNDDDEEEAARERRRRARQ
ERLRQKQEEESLGQVTDQVEVNAQNSVPDEEAKTTTNTQVEGDDEAA
FLERLARREERRQKRLQEALERQKEFDPTITDASLSLPSRRMQNDTAEN
ETTEKEEKSESRQERYEIEETETVTKSYQKNDWRDAEENKKEKDEKEEEE
EEEKPKRGSIGENQIKDEKIKKDKPEKKEEVKSFMDRKKGFTEVKSQNGEF
MTHKLKHTENTFSRPGGRASVDTKEAEGAPQVEAGKRLEELRRRRGET
ESEFEKQKQQAALAELEELKKKREERRKVLQEEEQRRKQEEADRKL
REEEKRRRLKEEIERRRAEAAEKRQKMPEDGLSDDKPKFKCFTPKGSSL
KIEERAFLNKSQKSSGVKSTHQAIVSKIDSRLEQYTSIAIEGKSAKPT
KPAASDLPVPAEGVRNIKSMWEKGNVSSPTAAGTPNKETAGLKVGVS
RINEWLTKTPDGNKSPAPKPSDLRPGDVSSKRNLWEKQSVDKVTSPTKV

Host: Mouse

Reactivity: Human

Quality Control Testing: Antibody reactive against mammalian transfected lysate.

Storage Buffer: No additive

Storage Instruction: Store at -20°C or lower. Aliquot to avoid repeated freezing and thawing.

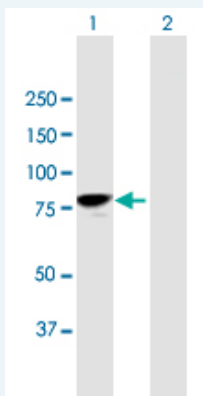
Note: For IHC and IF applications, antibody purification with Protein A will be needed prior to use.

MSDS: [Download](#)

Datasheet: [Download](#)

Applications

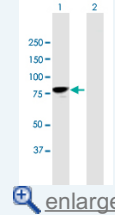
Western Blot (Transfected lysate)



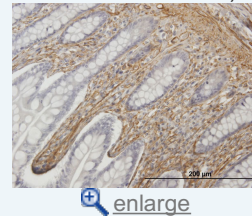
Western Blot analysis of CALD1 expression in transfected 293T cell line (H00000800-T01)

Application Image

Western Blot (Transfected lysate)



Immunohistochemistry (Formalin/PFA-fixed paraffin-embedded sections)



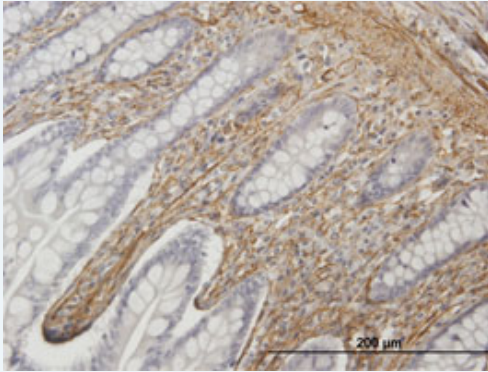
by CALD1 MaxPab polyclonal antibody.


Lane 1: CALD1 transfected lysate(59.18 KDa).

Lane 2: Non-transfected lysate.

 [Protocol Download](#)

Immunohistochemistry (Formalin/PFA-fixed paraffin-embedded sections)



 [enlarge this image](#)

Immunoperoxidase of purified MaxPab antibody to CALD1 on formalin-fixed paraffin-embedded human small Intestine. [antibody concentration 3 ug/ml]

 [Protocol Download](#)

Gene Information

Entrez GeneID: [800](#)

GeneBank [NM_004342.5](#)
Accession#:

Protein [NP_004333.1](#)
Accession#:

Gene Name: CALD1

Gene Alias: CDM,H-CAD,L-CAD,MGC21352,NAG22

Gene caldesmon 1
Description:

Omim ID: [114213](#)

Gene Ontology: [Hyperlink](#)

Gene Summary: This gene encodes a calmodulin- and actin-binding protein that plays an essential role in the regulation of smooth muscle and nonmuscle contraction. The conserved domain of this protein possesses the binding activities to Ca(2+)-calmodulin, actin, tropomyosin, myosin, and phospholipids. This protein is a potent inhibitor of the actin-tropomyosin activated myosin MgATPase, and serves as a mediating factor for Ca(2+)-dependent inhibition of smooth muscle contraction. Alternative splicing of this gene results in multiple transcript variants encoding distinct isoforms. [provided by RefSeq]

Other -
Designations:

Gene Pathway

[Vascular smooth muscle contraction](#)

Related Disease

[Diabetes Mellitus, Type 1](#) [Diabetic Nephropathies](#) [Genetic Predisposition to Disease](#)
[Tobacco Use Disorder](#)

