



# SZABO SCANDIC

Part of Europa Biosite

## Produktinformation



Forschungsprodukte & Biochemikalien



Zellkultur & Verbrauchsmaterial



Diagnostik & molekulare Diagnostik



Laborgeräte & Service

Weitere Information auf den folgenden Seiten!  
See the following pages for more information!



### Lieferung & Zahlungsart

siehe unsere [Liefer- und Versandbedingungen](#)

### Zuschläge

- Mindermengenzuschlag
- Trockeneiszuschlag
- Gefahrgutzuschlag
- Expressversand

### SZABO-SCANDIC HandelsgmbH

Quellenstraße 110, A-1100 Wien

T. +43(0)1 489 3961-0

F. +43(0)1 489 3961-7

[mail@szabo-scandic.com](mailto:mail@szabo-scandic.com)

[www.szabo-scandic.com](http://www.szabo-scandic.com)

[linkedin.com/company/szaboscandic](https://www.linkedin.com/company/szaboscandic) 

## CALD1 purified MaxPab mouse polyclonal antibody (B01P) MaxPab®

Catalog # : H00000800-B01P

規格 : [ 50 ug ]

[List All](#)

### Specification

**Product Description:** Mouse polyclonal antibody raised against a full-length human CALD1 protein.

**Immunogen:** CALD1 (NP\_004333.1, 1 a.a. ~ 538 a.a) full-length human protein.

**Sequence:**  
MDDFERRRELRRQKREEMRLEAERIAQNRNDDDEEEAARERRRRARQ  
ERLRQKQEEESLGQVTDQVEVNAQNSVPDEEAKTTTNTQVEGDDEAA  
FLERLARREERRQKRLQEALERQKEFDPTITDASLSLPSRRMQNDTAEN  
ETTEKEEKESRQERYEIEETETVTKSYQKNDWRDAEENKEDKEKEEE  
EEEKPKRGSIGENQIKDEKIKKDKPEKEEVKSFMDRKKGFTEVKSQNGEF  
MTHKLKHTENTFSRPGGRASVDTKEAEGAPQVEAGKRLEELRRRRGET  
ESEEFKQKQQAALALEELKKKREERRKVLQEEQRRKQEEADRKL  
REEEKRRRLKEEIERRRRAEAAEKRQKMPEDGLSDDKPKFKCFTPKGSSL  
KIEERAFLNKSQKSSGVKSTHQAIVSKIDSRLEQYTSIAIEGKSAKPT  
KPAASDLPVPAEGVRNIKSMWEKGNVSSPTAAGTPNKETAGLKVGVSS  
RINEWLTKTPDGNKSPAPKPSDLRPGDVSSKRNLWEKQSVDKVTSPTKV

**Host:** Mouse

**Reactivity:** Human

**Quality Control Testing:** Antibody reactive against mammalian transfected lysate.

**Storage Buffer:** In 1x PBS, pH 7.4

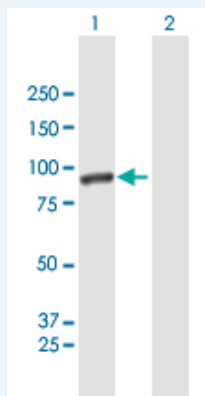
**Storage Instruction:** Store at -20°C or lower. Aliquot to avoid repeated freezing and thawing.

**MSDS:** [Download](#)

**Datasheet:** [Download](#)

### Applications

#### Western Blot (Transfected lysate)

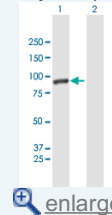


Western Blot analysis of CALD1 expression in transfected 293T cell line (H00000800-T01) by CALD1 MaxPab polyclonal antibody.

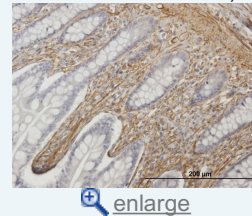
Lane 1: CALD1 transfected lysate(59.18 KDa).

### Application Image

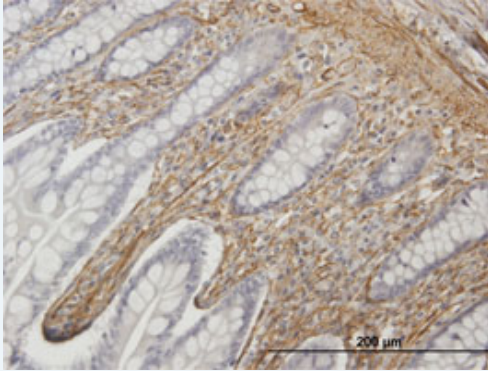
#### Western Blot (Transfected lysate)



#### Immunohistochemistry (Formalin/PFA-fixed paraffin-embedded sections)



### Immunohistochemistry (Formalin/PFA-fixed paraffin-embedded sections)



 [enlarge this image](#)

Immunoperoxidase of purified MaxPab antibody to CALD1 on formalin-fixed paraffin-embedded human small Intestine. [antibody concentration 3 ug/ml]

### Gene Information

Entrez GeneID: [800](#)

GeneBank [NM\\_004342.5](#)  
Accession#:

Protein [NP\\_004333.1](#)  
Accession#:

Gene Name: CALD1

Gene Alias: CDM,H-CAD,L-CAD,MGC21352,NAG22

Gene caldesmon 1  
Description:

Omim ID: [114213](#)

Gene Ontology: [Hyperlink](#)

**Gene Summary:** This gene encodes a calmodulin- and actin-binding protein that plays an essential role in the regulation of smooth muscle and nonmuscle contraction. The conserved domain of this protein possesses the binding activities to Ca(2+)-calmodulin, actin, tropomyosin, myosin, and phospholipids. This protein is a potent inhibitor of the actin-tropomyosin activated myosin MgATPase, and serves as a mediating factor for Ca(2+)-dependent inhibition of smooth muscle contraction. Alternative splicing of this gene results in multiple transcript variants encoding distinct isoforms. [provided by RefSeq]

Other -  
Designations:

### Gene Pathway

[Vascular smooth muscle contraction](#)

### Related Disease

[Diabetes Mellitus, Type 1](#) [Diabetic Nephropathies](#) [Genetic Predisposition to Disease](#)  
[Tobacco Use Disorder](#)

