



SZABO SCANDIC

Part of Europa Biosite

Produktinformation



Forschungsprodukte & Biochemikalien



Zellkultur & Verbrauchsmaterial



Diagnostik & molekulare Diagnostik



Laborgeräte & Service

Weitere Information auf den folgenden Seiten!
See the following pages for more information!



Lieferung & Zahlungsart

siehe unsere [Liefer- und Versandbedingungen](#)

Zuschläge

- Mindermengenzuschlag
- Trockeneiszuschlag
- Gefahrgutzuschlag
- Expressversand

SZABO-SCANDIC HandelsgmbH

Quellenstraße 110, A-1100 Wien

T. +43(0)1 489 3961-0

F. +43(0)1 489 3961-7

mail@szabo-scandic.com

www.szabo-scandic.com

[linkedin.com/company/szaboscandic](https://www.linkedin.com/company/szaboscandic) 



CALM2 purified MaxPab mouse polyclonal antibody (B01P) MaxPab®

Catalog # : H00000805-B01P

規格 : [50 ug]

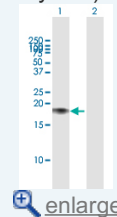
[List All](#)

Specification

Product Description:	Mouse polyclonal antibody raised against a full-length human CALM2 protein.
Immunogen:	CALM2 (AAH03354, 1 a.a. ~ 149 a.a) full-length human protein.
Sequence:	MADQLTEEQIAEFKEAFSLFDKDGDTITTKELGTVMRSLGQNPTEAEL QDMINEVDADGNGTIDFPEFLTMMARKVKDTDSEEEIREAFRVFDKDG GYISAAELRHVMTNLGEKLTDEEVDEMIREADIDGDGQVNYEEFVQMMT AK
Host:	Mouse
Reactivity:	Human
Quality Control Testing:	Antibody reactive against mammalian transfected lysate.
Storage Buffer:	In 1x PBS, pH 7.4
Storage Instruction:	Store at -20°C or lower. Aliquot to avoid repeated freezing and thawing.
MSDS:	 Download
Datasheet:	 Download

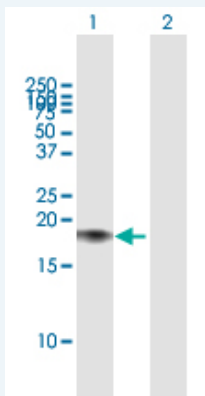
Application Image

Western Blot (Transfected lysate)



Applications

Western Blot (Transfected lysate)



Western Blot analysis of CALM2 expression in transfected 293T cell line ([H00000805-T01](#)) by CALM2 MaxPab polyclonal antibody.

Lane 1: CALM2 transfected lysate(16.5 KDa).
Lane 2: Non-transfected lysate.

 [Protocol Download](#)

Gene Information

Entrez GeneID: [805](#)

GeneBank [BC003354](#)
Accession#:

Protein [AAH03354](#)
Accession#:

Gene Name: CALM2

Gene Alias: CAMII,PHKD,PHKD2

Gene Description: calmodulin 2 (phosphorylase kinase, delta)

Omim ID: [114182](#)

Gene Ontology: [Hyperlink](#)

Other Designations: LP7057 protein,calmodulin 2,phosphorylase kinase delta

Gene Pathway

[Alzheimer's disease](#) [Calcium signaling pathway](#) [Glioma](#) [GnRH signaling pathway](#)
[Insulin signaling pathway](#) [Long-term potentiation](#) [Melanogenesis](#)
[Neurotrophin signaling pathway](#) [Olfactory transduction](#)
[Phosphatidylinositol signaling system](#) [Vascular smooth muscle contraction](#)

Related Disease

[Cardiovascular Diseases](#) [Diabetes Mellitus, Type 2](#) [Edema](#)
[Genetic Predisposition to Disease](#) [Osteoarthritis, Hip](#) [Osteoporosis, Postmenopausal](#)
[Tobacco Use Disorder](#) [Ventricular Dysfunction, Left](#)