



# SZABO SCANDIC

Part of Europa Biosite

## Produktinformation



Forschungsprodukte & Biochemikalien



Zellkultur & Verbrauchsmaterial



Diagnostik & molekulare Diagnostik



Laborgeräte & Service

Weitere Information auf den folgenden Seiten!  
See the following pages for more information!



### Lieferung & Zahlungsart

siehe unsere [Liefer- und Versandbedingungen](#)

### Zuschläge

- Mindermengenzuschlag
- Trockeneiszuschlag
- Gefahrgutzuschlag
- Expressversand

### SZABO-SCANDIC HandelsgmbH

Quellenstraße 110, A-1100 Wien

T. +43(0)1 489 3961-0

F. +43(0)1 489 3961-7

[mail@szabo-scandic.com](mailto:mail@szabo-scandic.com)

[www.szabo-scandic.com](http://www.szabo-scandic.com)

[linkedin.com/company/szaboscandic](https://www.linkedin.com/company/szaboscandic) 

## CALML3 monoclonal antibody (M04), clone 2A11

Catalog # : H00000810-M04

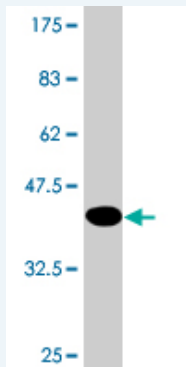
規格 : [ 100 ug ]

List All

### Specification

<b>Product Description:</b>	Mouse monoclonal antibody raised against a full-length recombinant CALML3.
<b>Immunogen:</b>	CALML3 (AAH31889, 1 a.a. ~ 149 a.a) full-length recombinant protein with GST tag. MW of the GST tag alone is 26 KDa.
<b>Sequence:</b>	MADQLTEEQVTEFKEAFSLFDKDGDCITTRGLGTVMRS LGQNPTAE LRDM MSEIDRDGNGTVDFPEFLGMMARKMKD TDNEEEI REAFRVFDK DNGFV SAAELRHVMTRLGEKLSDEEVD EMIRAADTDGDGQVNYEEFVR VL VSK
<b>Host:</b>	Mouse
<b>Reactivity:</b>	Human
<b>Isotype:</b>	IgG2b Kappa

**Quality Control Testing:** Antibody Reactive Against Recombinant Protein.



Western Blot detection against Immunogen (42.13 KDa) .

**Storage Buffer:** In 1x PBS, pH 7.4

**Storage Instruction:** Store at -20°C or lower. Aliquot to avoid repeated freezing and thawing.

**MSDS:** [Download](#)

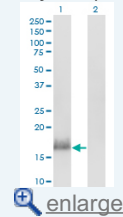
**Datasheet:** [Download](#)

### Applications

Western Blot (Transfected lysate)

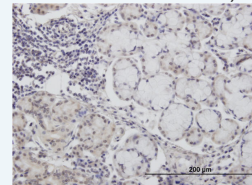
### Application Image

Western Blot (Transfected lysate)



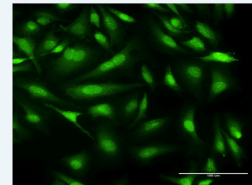
Western Blot (Recombinant protein)

Immunohistochemistry (Formalin/PFA-fixed paraffin-embedded sections)



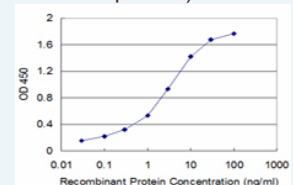
[enlarge](#)

Immunofluorescence



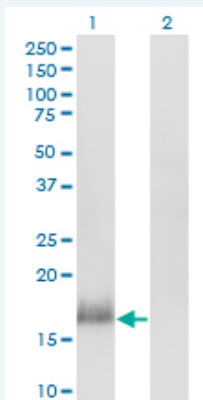
[enlarge](#)

Sandwich ELISA (Recombinant protein)



[enlarge](#)

ELISA



Western Blot analysis of CALML3 expression in transfected 293T cell line by CALML3 monoclonal antibody (M04), clone 2A11.

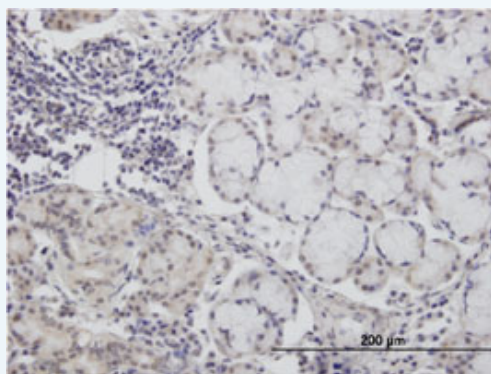
Lane 1: CALML3 transfected lysate(16.9 KDa).  
Lane 2: Non-transfected lysate.

[Protocol Download](#)

### Western Blot (Recombinant protein)

[Protocol Download](#)

### Immunohistochemistry (Formalin/PFA-fixed paraffin-embedded sections)

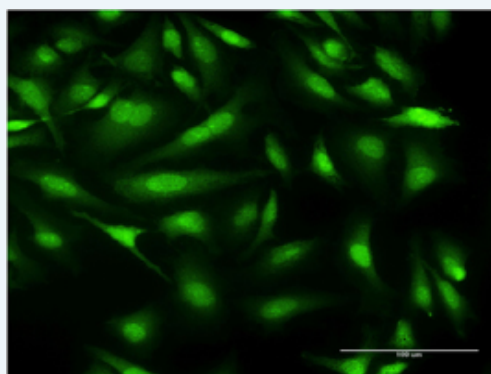


[enlarge this image](#)

Immunoperoxidase of monoclonal antibody to CALML3 on formalin-fixed paraffin-embedded human salivary gland. [antibody concentration 12 ug/ml]

[Protocol Download](#)

### Immunofluorescence

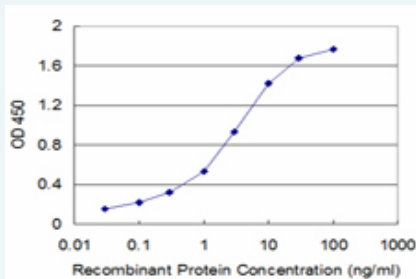


[enlarge this image](#)

Immunofluorescence of monoclonal antibody to CALML3 on HeLa cell . [antibody concentration 10 ug/ml]

[Protocol Download](#)

### Sandwich ELISA (Recombinant protein)



Detection limit for recombinant GST tagged CALML3 is approximately 0.1ng/ml as a capture antibody.

 [Protocol Download](#)

## ELISA

### Gene Information

Entrez GeneID: [810](#)

GeneBank [BC031889](#)

Accession#:

Protein [AAH31889](#)

Accession#:

Gene Name: CALML3

Gene Alias: CLP

Gene calmodulin-like 3

Description:

Omim ID: [114184](#)

Gene Ontology: [Hyperlink](#)

Other -

Designations:

### Gene Pathway

[Alzheimer's disease](#) [Calcium signaling pathway](#) [Glioma](#) [GnRH signaling pathway](#)

[Insulin signaling pathway](#) [Long-term potentiation](#) [Melanogenesis](#)

[Neurotrophin signaling pathway](#) [Olfactory transduction](#)

[Phosphatidylinositol signaling system](#) [Vascular smooth muscle contraction](#)

### Related Disease

[Alzheimer Disease](#) [Genetic Predisposition to Disease](#)

[服務條款](#) | [隱私權政策](#) | [著作及商標](#) | [網站地圖](#)

©2016 亞諾法生技股份有限公司 Abnova Corporation. 版權所有.