



# SZABO SCANDIC

Part of Europa Biosite

## Produktinformation



Forschungsprodukte & Biochemikalien



Zellkultur & Verbrauchsmaterial



Diagnostik & molekulare Diagnostik



Laborgeräte & Service

Weitere Information auf den folgenden Seiten!  
See the following pages for more information!



### Lieferung & Zahlungsart

siehe unsere [Liefer- und Versandbedingungen](#)

### Zuschläge

- Mindermengenzuschlag
- Trockeneiszuschlag
- Gefahrgutzuschlag
- Expressversand

### SZABO-SCANDIC HandelsgmbH

Quellenstraße 110, A-1100 Wien

T. +43(0)1 489 3961-0

F. +43(0)1 489 3961-7

[mail@szabo-scandic.com](mailto:mail@szabo-scandic.com)

[www.szabo-scandic.com](http://www.szabo-scandic.com)

[linkedin.com/company/szaboscandic](https://www.linkedin.com/company/szaboscandic) 

## CALML3 293T Cell Transient Overexpression Lysate(Denatured)

Catalog # : H00000810-T03

規格 : [ 100 uL ]

[List All](#)

### Specification

**Transfected Cell Line:** 293T

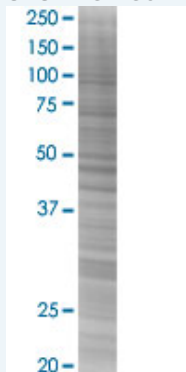
**Plasmid:** pCMV-CALML3 full-length

**Host:** Human

**Theoretical MW (kDa):** 16.9

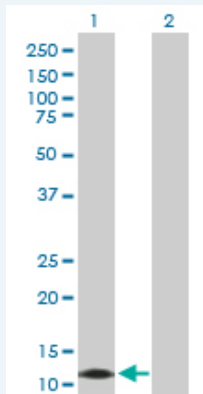
**Quality Control Testing:** Transient overexpression cell lysate was tested with Anti-CALML3 antibody ([H00000810-D01P](#)) by Western Blots.

#### SDS-PAGE Gel



CALML3 transfected lysate.

#### Western Blot



Lane 1: CALML3 transfected lysate ( 16.90 KDa)

Lane 2: Non-transfected lysate.

**Storage Buffer:** 1X Sample Buffer (50 mM Tris-HCl, 2% SDS, 10% glycerol, 300 mM 2-mercaptoethanol, 0.01% Bromophenol blue)

**Storage Instruction:** Store at -80°C. Aliquot to avoid repeated freezing and thawing.

**MSDS:** [Download](#)

### Applications

### Application Image

Western Blot

## Western Blot

### Gene Information

Entrez GeneID: [810](#)

GeneBank Accession#: [NM\\_005185.2](#)

Protein Accession#: [NP\\_005176.1](#)

Gene Name: CALML3

Gene Alias: CLP

Gene Description: calmodulin-like 3

Omim ID: [114184](#)

Gene Ontology: [Hyperlink](#)

Other Designations: -

### Gene Pathway

[Alzheimer's disease](#) [Calcium signaling pathway](#) [Glioma](#) [GnRH signaling pathway](#)  
[Insulin signaling pathway](#) [Long-term potentiation](#) [Melanogenesis](#)  
[Neurotrophin signaling pathway](#) [Olfactory transduction](#)  
[Phosphatidylinositol signaling system](#) [Vascular smooth muscle contraction](#)

### Related Disease

[Alzheimer Disease](#) [Genetic Predisposition to Disease](#)