



SZABO SCANDIC

Part of Europa Biosite

Produktinformation



Forschungsprodukte & Biochemikalien



Zellkultur & Verbrauchsmaterial



Diagnostik & molekulare Diagnostik



Laborgeräte & Service

Weitere Information auf den folgenden Seiten!
See the following pages for more information!



Lieferung & Zahlungsart

siehe unsere [Liefer- und Versandbedingungen](#)

Zuschläge

- Mindermengenzuschlag
- Trockeneiszuschlag
- Gefahrgutzuschlag
- Expressversand

SZABO-SCANDIC HandelsgmbH

Quellenstraße 110, A-1100 Wien

T. +43(0)1 489 3961-0

F. +43(0)1 489 3961-7

mail@szabo-scandic.com

www.szabo-scandic.com

[linkedin.com/company/szaboscandic](https://www.linkedin.com/company/szaboscandic) 

CALR purified MaxPab rabbit polyclonal antibody (D01P) MaxPab®

Catalog # : H00000811-D01P

規格 : [100 ug]

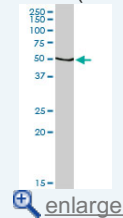
[List All](#)

Specification

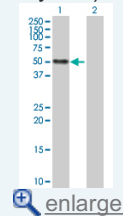
Product Description:	Rabbit polyclonal antibody raised against a full-length human CALR protein.
Immunogen:	CALR (NP_004334.1, 1 a.a. ~ 417 a.a) full-length human protein.
Sequence:	MLLSVPLLLGLLGLAVAEPVYFKEQFLDGGDWTSRWIESKHKSDFGKF VLSSGKFGYDDEEKDKGLQTSQDARFYALSASFEPFSNKGQTLVQFTV KHEQNIDCGGGYVKLFPNSLDQTDHMGDSEYNIMFGPDICGPGTKKVHVI FNYKGNVLINKDIRCKDDEFTHLYTLVLRPDNTYEVKIDNSQVESGSLED DWDFLPPKIKDPDASKPEDWDERAKIDDPTDSKPEDWDKPEHIPDPDA KKPEDWDEEMDGEWEPPIQNPEYKGEWKPRQIDNPDYKGTWIHPEIDN PEYSPDPSIYAYDNFGVLGLDLWQVKSGTIFDNFLITNDEAYAEFFGNET WGVTKAAEKQMKDKQDEEQRLKEEEEEDKKRKEEEEAEDKEDDEDKDE DEEDEEDKEEDEEEDVPGQAKDEL
Host:	Rabbit
Reactivity:	Human
Quality Control Testing:	Antibody reactive against mammalian transfected lysate.
Storage Buffer:	In 1x PBS, pH 7.4
Storage Instruction:	Store at -20°C or lower. Aliquot to avoid repeated freezing and thawing.
MSDS:	Download
Datasheet:	Download

Application Image

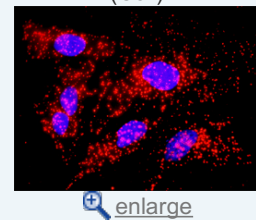
Western Blot (Cell lysate)



Western Blot (Transfected lysate)

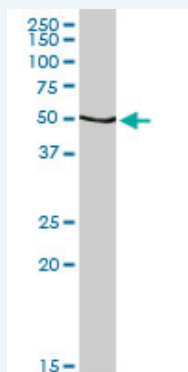


In situ Proximity Ligation Assay (Cell)



Applications

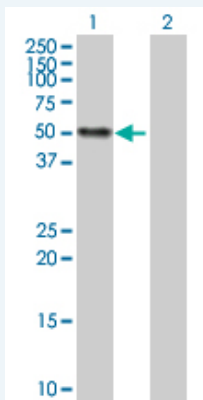
Western Blot (Cell lysate)



CALR MaxPab rabbit polyclonal antibody. Western Blot analysis of CALR expression in A-431.

[Protocol Download](#)

Western Blot (Transfected lysate)

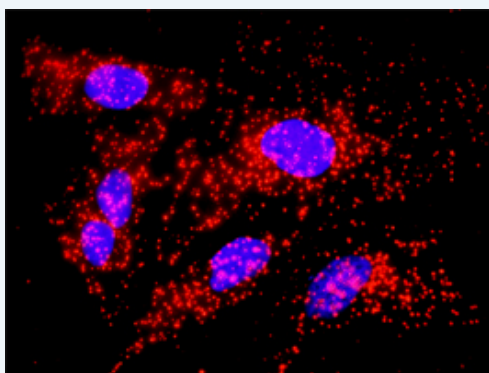


Western Blot analysis of CALR expression in transfected 293T cell line (H00000811-T01) by CALR MaxPab polyclonal antibody.

Lane 1: CALR transfected lysate(48.10 KDa).
Lane 2: Non-transfected lysate.

 Protocol Download

In situ Proximity Ligation Assay (Cell)



Proximity Ligation Analysis of protein-protein interactions between CALR and APP. HeLa cells were stained with anti-CALR rabbit purified polyclonal 1:1200 and anti-APP mouse monoclonal antibody 1:50. Each red dot represents the detection of protein-protein interaction complex, and nuclei were counterstained with DAPI (blue).

Gene Information

Entrez GeneID: [811](#)

GeneBank [NM_004343.2](#)
Accession#:

Protein [NP_004334.1](#)
Accession#:

Gene Name: CALR

Gene Alias: CRT,FLJ26680,RO,SSA,cC1qR

Gene [calreticulin](#)
Description:

Omim ID: [109091](#)

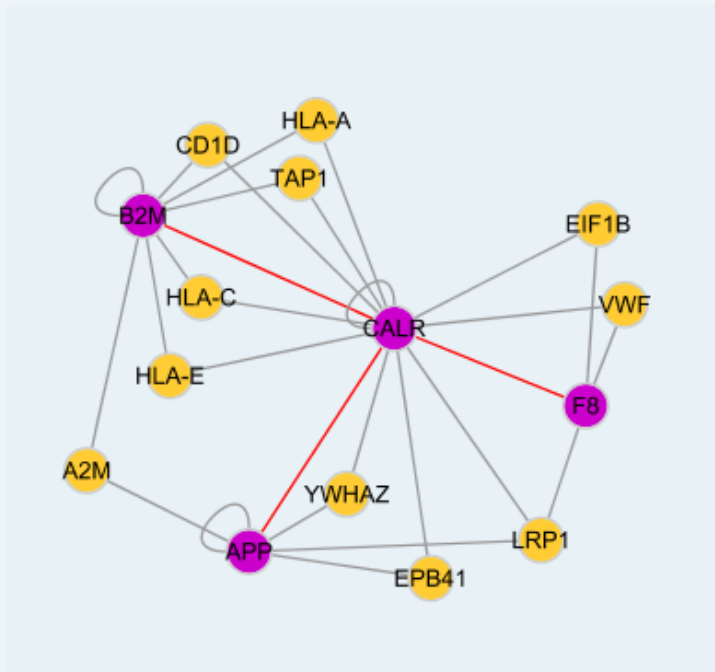
Gene Ontology: [Hyperlink](#)

Gene Summary: Calreticulin is a multifunctional protein that acts as a major Ca²⁺-binding (storage) protein in the lumen of the endoplasmic reticulum. It is also found in the nucleus, suggesting that it may have a role in transcription regulation. Calreticulin binds to the synthetic peptide KLGFFKR, which is almost identical to an amino acid sequence in the DNA-binding domain of the superfamily of nuclear receptors. Calreticulin binds to antibodies in certain sera of systemic lupus and Sjogren

patients which contain anti-Ro/SSA antibodies, it is highly conserved among species, and it is located in the endoplasmic and sarcoplasmic reticulum where it may bind calcium. The amino terminus of calreticulin interacts with the DNA-binding domain of the glucocorticoid receptor and prevents the receptor from binding to its specific glucocorticoid response element. Calreticulin can inhibit the binding of androgen receptor to its hormone-responsive DNA element and can inhibit androgen receptor and retinoic acid receptor transcriptional activities in vivo, as well as retinoic acid-induced neuronal differentiation. Thus, calreticulin can act as an important modulator of the regulation of gene transcription by nuclear hormone receptors. Systemic lupus erythematosus is associated with increased autoantibody titers against calreticulin but calreticulin is not a Ro/SS-A antigen. Earlier papers referred to calreticulin as an Ro/SS-A antigen but this was later disproven. Increased autoantibody titer against human calreticulin is found in infants with complete congenital heart block of both the IgG and IgM classes. [provided by RefSeq

Other Designations: Sicca syndrome antigen A (autoantigen Ro; calreticulin), autoantigen Ro

Interactome



Gene Pathway

[Antigen processing and presentation](#)

Related Disease

[Cardiovascular Diseases](#) [Diabetes Mellitus, Type 2](#) [Edema](#)

[服務條款](#) | [隱私權政策](#) | [著作及商標](#) | [網站地圖](#)

©2016 亞諾法生技股份有限公司 Abnova Corporation. 版權所有.