



SZABO SCANDIC

Part of Europa Biosite

Produktinformation



Forschungsprodukte & Biochemikalien



Zellkultur & Verbrauchsmaterial



Diagnostik & molekulare Diagnostik



Laborgeräte & Service

Weitere Information auf den folgenden Seiten!
See the following pages for more information!



Lieferung & Zahlungsart

siehe unsere [Liefer- und Versandbedingungen](#)

Zuschläge

- Mindermengenzuschlag
- Trockeneiszuschlag
- Gefahrgutzuschlag
- Expressversand

SZABO-SCANDIC HandelsgmbH

Quellenstraße 110, A-1100 Wien

T. +43(0)1 489 3961-0

F. +43(0)1 489 3961-7

mail@szabo-scandic.com

www.szabo-scandic.com

[linkedin.com/company/szaboscandic](https://www.linkedin.com/company/szaboscandic) 

CALR monoclonal antibody (M01), clone 1G11-1A9

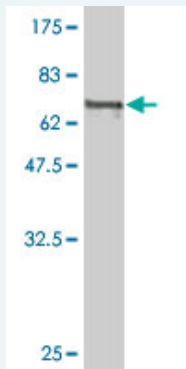
Catalog # : H00000811-M01

規格 : [100 ug]

[List All](#)

Specification

Product Description:	Mouse monoclonal antibody raised against a full length recombinant CALR.
Immunogen:	CALR (AAH02500.1, 1 a.a. ~ 417 a.a) full-length recombinant protein with GST tag. MW of the GST tag alone is 26 KDa.
Sequence:	MLLSVPLLLGLLGLAVAEPAYVFKEQFLDGDGWTSRWIESKHKSDFGKF VLSSGKFYGDDEEKDKGLQTSQDARFYALSASFEPFSNKGQTLVQFTV KHEQNIDCGGGYVKLFPSLDQTDHGDSEYNIMFGPDICGPGTKKVHM FNYKGKNVLINKDIRCKDDEFTHLTYLIVRPDNTYEVKIDNSQVESGSLED DWDFLPPKKIKDPDASKPEDWDERAKIDDPTDSKPEDWDKPEHIPDPA KKPEDWDEEMDGEWEPPVIQNPEYKGEWKPRQIDNPDYKGTWHPIDN PEYSPDPSIYAYDNFGVLGLDLWQVKSGTIFDNFLITNDEAYAEFFGNET WGVTKAAEKQMKDKQDEEQRLKEEEEDKKRKEEEEAEDKEDDEDKDE DEEDEEDKEDEEEDVPGQAKDEL
Host:	Mouse
Reactivity:	Human
Isotype:	IgG1 kappa
Quality Control Testing:	Antibody Reactive Against Recombinant Protein.



Western Blot detection against Immunogen (71.61 KDa) .

Storage Buffer: In 1x PBS, pH 7.4

Storage Instruction: Store at -20°C or lower. Aliquot to avoid repeated freezing and thawing.

MSDS: [Download](#)

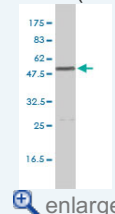
Datasheet: [Download](#)

Publication Reference

1. The angiogenesis inhibitor vasostatin is regulated by neutrophil elastase dependent cleavage of calreticulin in AML patients.
Mans S, Banz Y, Mueller BU, Pabst T. Blood. 2012 Aug 22.

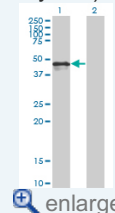
Application Image

Western Blot (Cell lysate)



[enlarge](#)

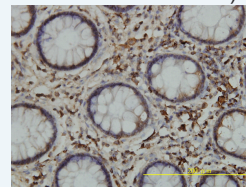
Western Blot (Transfected lysate)



[enlarge](#)

Western Blot (Recombinant protein)

Immunohistochemistry (Formalin/PFA-fixed paraffin-embedded sections)



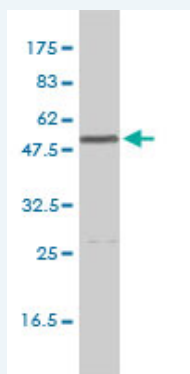
[enlarge](#)

Sandwich ELISA (Recombinant protein)

ELISA

Applications

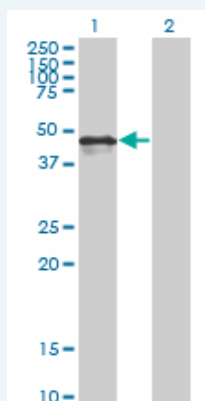
Western Blot (Cell lysate)



CALR monoclonal antibody (M01), clone 1G11-1A9 Western Blot analysis of CALR expression in K-562 (Cat # L009V1).

 [Protocol Download](#)


Western Blot (Transfected lysate)




Western Blot analysis of CALR expression in transfected 293T cell line by CALR monoclonal antibody (M01), clone 1G11-1A9.

Lane 1: CALR transfected lysate(48 KDa).

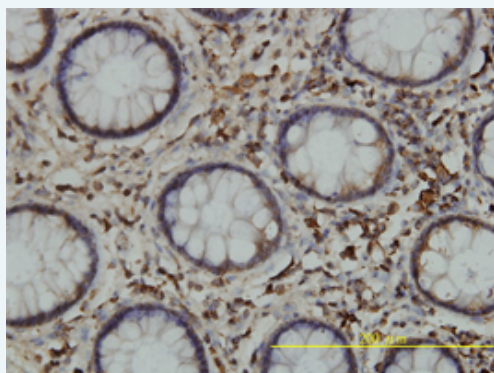
Lane 2: Non-transfected lysate.

 [Protocol Download](#)

Western Blot (Recombinant protein)

 [Protocol Download](#)

Immunohistochemistry (Formalin/PFA-fixed paraffin-embedded sections)



 [enlarge this image](#)

Immunoperoxidase of monoclonal antibody to CALR on formalin-fixed paraffin-embedded human colon tissue. [antibody concentration 1 ug/ml]

 [Protocol Download](#)

Sandwich ELISA (Recombinant protein)

Detection limit for recombinant GST tagged CALR is approximately 0.1ng/ml as a capture antibody.

 [Protocol Download](#)

ELISA

Gene Information

Entrez GeneID: [811](#)

GeneBank
Accession#: [BC020493](#)

Protein
Accession#: [AAH02500.1](#)

Gene Name: CALR

Gene Alias: CRT,FLJ26680,RO,SSA,cC1qR

Gene
Description: calreticulin

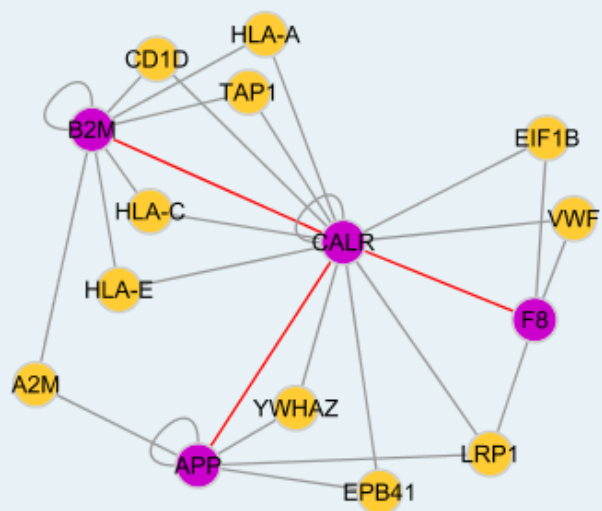
Omim ID: [109091](#)

Gene Ontology: [Hyperlink](#)

Gene Summary: Calreticulin is a multifunctional protein that acts as a major Ca(2+)-binding (storage) protein in the lumen of the endoplasmic reticulum. It is also found in the nucleus, suggesting that it may have a role in transcription regulation. Calreticulin binds to the synthetic peptide KLGFKKR, which is almost identical to an amino acid sequence in the DNA-binding domain of the superfamily of nuclear receptors. Calreticulin binds to antibodies in certain sera of systemic lupus and Sjogren patients which contain anti-Ro/SSA antibodies, it is highly conserved among species, and it is located in the endoplasmic and sarcoplasmic reticulum where it may bind calcium. The amino terminus of calreticulin interacts with the DNA-binding domain of the glucocorticoid receptor and prevents the receptor from binding to its specific glucocorticoid response element. Calreticulin can inhibit the binding of androgen receptor to its hormone-responsive DNA element and can inhibit androgen receptor and retinoic acid receptor transcriptional activities in vivo, as well as retinoic acid-induced neuronal differentiation. Thus, calreticulin can act as an important modulator of the regulation of gene transcription by nuclear hormone receptors. Systemic lupus erythematosus is associated with increased autoantibody titers against calreticulin but calreticulin is not a Ro/SS-A antigen. Earlier papers referred to calreticulin as an Ro/SS-A antigen but this was later disproven. Increased autoantibody titer against human calreticulin is found in infants with complete congenital heart block of both the IgG and IgM classes. [provided by RefSeq]

Other
Designations: Sicca syndrome antigen A (autoantigen Ro; calreticulin),autoantigen Ro

Interactome



Gene Pathway

Antigen processing and presentation

Related Disease

Cardiovascular Diseases Diabetes Mellitus, Type 2 Edema

[服務條款](#) | [隱私權政策](#) | [著作及商標](#) | [網站地圖](#)

©2016 亞諾法生技股份有限公司 Abnova Corporation. 版權所有.