



SZABO SCANDIC

Part of Europa Biosite

Produktinformation



Forschungsprodukte & Biochemikalien



Zellkultur & Verbrauchsmaterial



Diagnostik & molekulare Diagnostik



Laborgeräte & Service

Weitere Information auf den folgenden Seiten!
See the following pages for more information!



Lieferung & Zahlungsart

siehe unsere [Liefer- und Versandbedingungen](#)

Zuschläge

- Mindermengenzuschlag
- Trockeneiszuschlag
- Gefahrgutzuschlag
- Expressversand

SZABO-SCANDIC HandelsgmbH

Quellenstraße 110, A-1100 Wien

T. +43(0)1 489 3961-0

F. +43(0)1 489 3961-7

mail@szabo-scandic.com

www.szabo-scandic.com

[linkedin.com/company/szaboscandic](https://www.linkedin.com/company/szaboscandic) 

CALU purified MaxPab mouse polyclonal antibody (B01P) MaxPab®

Catalog # : H00000813-B01P

規格 : [50 ug]

[List All](#)

Specification

Product Description: Mouse polyclonal antibody raised against a full-length human CALU protein.

Immunogen: CALU (NP_001210, 1 a.a. ~ 315 a.a) full-length human protein.

Sequence:
 MDLRQFLMCLSLCTAFALSKPTEKKDRVHHEPQLSDKVHNDQAQSFQYD
 HDAFLGAEAAKTFDQLTPEESKERLGKIVSKIDGDKDGFVTDELKDWIK
 FAQKRWIYEDVERQWKGHDLNEDGLVSWEEYKNATYGYLDDPDPDD
 GFNYKQMMVRDERRFKMADKDGDLIATKEEFTAFLLHPEEYDYMKDIVVQ
 ETMEDIDKNADGFDLEEYIGDMYSHDGNTDEPEWVKTEREQFVEFRDK
 NRDGKMDKEETKDWILPSDYDHAAEARHLVYESDQNKDGKLTKEEIVD
 KYDLFVGSQATDFGEALVRHDEF

Host: Mouse

Reactivity: Human

Quality Control Testing: Antibody reactive against mammalian transfected lysate.

Storage Buffer: In 1x PBS, pH 7.4

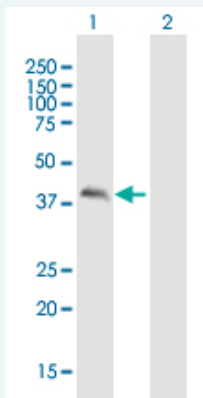
Storage Instruction: Store at -20°C or lower. Aliquot to avoid repeated freezing and thawing.

MSDS: [Download](#)

Datasheet: [Download](#)

Applications

Western Blot (Transfected lysate)



Western Blot analysis of CALU expression in transfected 293T cell line (H00000813-T02) by CALU MaxPab polyclonal antibody.

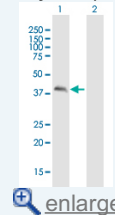
Lane 1: CALU transfected lysate(34.65 KDa).

Lane 2: Non-transfected lysate.

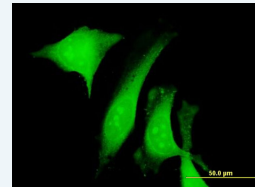
[Protocol Download](#)

Application Image

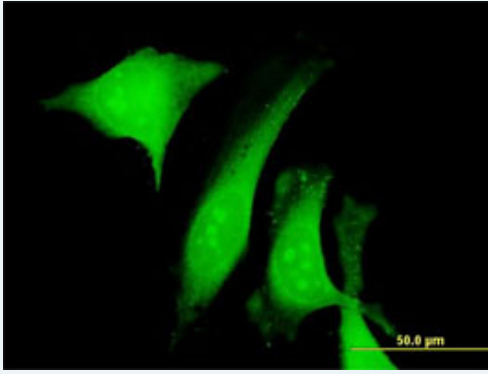
Western Blot (Transfected lysate)



Immunofluorescence



Immunofluorescence



[enlarge this image](#)

Immunofluorescence of purified MaxPab antibody to CALU on HeLa cell. [antibody concentration 10 ug/ml]

[Protocol Download](#)

Gene Information

Entrez GeneID: [813](#)

GeneBank Accession#: [NM_001219](#)

Protein Accession#: [NP_001210](#)

Gene Name: CALU

Gene Alias: FLJ90608

Gene Description: calumenin

Omim ID: [603420](#)

Gene Ontology: [Hyperlink](#)

Gene Summary: The product of this gene is a calcium-binding protein localized in the endoplasmic reticulum (ER) and it is involved in such ER functions as protein folding and sorting. This protein belongs to a family of multiple EF-hand proteins (CERC) that include reticulocalbin, ERC-55, and Cab45 and the product of this gene. Alternatively spliced transcript variants encoding different isoforms have been identified. [provided by RefSeq]

Other Designations: crocalbin-like protein,multiple EF-hand protein

Related Disease

[Calcinosis Cardiovascular Diseases](#) [Cerebrovascular Accident](#) [Coronary Artery Disease](#)
[Diabetes Mellitus, Type 2](#) [Edema](#) [Hemorrhage](#)