



SZABO SCANDIC

Part of Europa Biosite

Produktinformation



Forschungsprodukte & Biochemikalien



Zellkultur & Verbrauchsmaterial



Diagnostik & molekulare Diagnostik



Laborgeräte & Service

Weitere Information auf den folgenden Seiten!
See the following pages for more information!



Lieferung & Zahlungsart

siehe unsere [Liefer- und Versandbedingungen](#)

Zuschläge

- Mindermengenzuschlag
- Trockeneiszuschlag
- Gefahrgutzuschlag
- Expressversand

SZABO-SCANDIC HandelsgmbH

Quellenstraße 110, A-1100 Wien

T. +43(0)1 489 3961-0

F. +43(0)1 489 3961-7

mail@szabo-scandic.com

www.szabo-scandic.com

[linkedin.com/company/szaboscandic](https://www.linkedin.com/company/szaboscandic) 

CALU monoclonal antibody (M02), clone 6C8

Catalog # : H00000813-M02

規格 : [100 ug]

[List All](#)

Specification

Product Description: Mouse monoclonal antibody raised against a full-length recombinant CALU.

Immunogen: CALU (NP_001210.1, 1 a.a. ~ 315 a.a) full-length recombinant protein with GST tag. MW of the GST tag alone is 26 KDa.

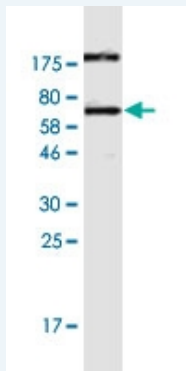
Sequence: MDLRQFLMCLSLCTAFALSKPTEKKDRVHHEPQLSDKVHNDAAQSFYD
HDAFLGAEEAKTFDQLTPEESKERLGKIVSKIDGDKDGFVTVDELKDWIK
FAQKRWIYEDVERQWKGHDLNEDGLVSWEEYKNATYGYVLDLDDPDPDD
GFNYKQMMVRDERRFKMADKDGDLIATKEEFTAFHPEEYDYMKDIVVQ
ETMEDIDKNADGFIDLEEYIGDMYSHDGNTDEPEWVKTEREQFVEFRDK
NRDGKMDKEETKDWILPSDYDHAEAEARHLVYESDQNKDGKLTKEEIVD
KYDLFVGSQATDFGEALVRHDEF

Host: Mouse

Reactivity: Human

Isotype: IgG2a Kappa

Quality Control Testing: Antibody Reactive Against Recombinant Protein.



Western Blot detection against Immunogen (63.5 KDa) .

Storage Buffer: In 1x PBS, pH 7.4

Storage Instruction: Store at -20°C or lower. Aliquot to avoid repeated freezing and thawing.

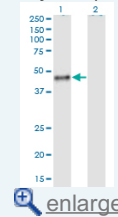
Datasheet: [Download](#)

Applications

Western Blot (Transfected lysate)

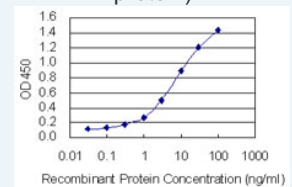
Application Image

Western Blot (Transfected lysate)

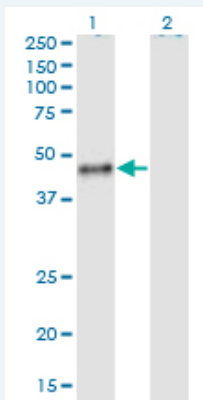


Western Blot (Recombinant protein)

Sandwich ELISA (Recombinant protein)



ELISA



Western Blot analysis of CALU expression in transfected 293T cell line by CALU monoclonal antibody (M02), clone 6C8.

Lane 1: CALU transfected lysate (Predicted MW: 37.1 KDa).

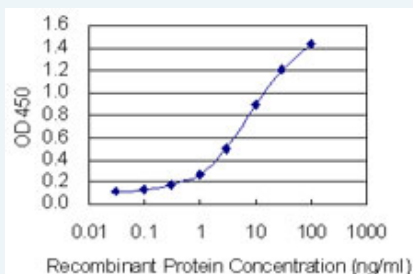
Lane 2: Non-transfected lysate.

[Protocol Download](#)

Western Blot (Recombinant protein)

[Protocol Download](#)

Sandwich ELISA (Recombinant protein)



Detection limit for recombinant GST tagged CALU is 0.1 ng/ml as a capture antibody.

[Protocol Download](#)

ELISA

Gene Information

Entrez GeneID: [813](#)

GeneBank [NM_001219.2](#)

Accession#:

Protein [NP_001210.1](#)

Accession#:

Gene Name: CALU

Gene Alias: FLJ90608

Gene Description: calumenin

Description:

Omim ID: [603420](#)

Gene Ontology: [Hyperlink](#)

Gene Summary: The product of this gene is a calcium-binding protein localized in the endoplasmic reticulum (ER) and it is involved in such ER functions as protein folding and sorting. This protein belongs to a family of multiple EF-hand proteins (CERC) that include reticulocalbin, ERC-55, and Cab45 and the product of this gene. Alternatively spliced transcript variants encoding different isoforms have been identified. [provided by

RefSeq

Other crocalbin-like protein,multiple EF-hand protein
Designations:

Related Disease

Calcinosis Cardiovascular Diseases Cerebrovascular Accident Coronary Artery Disease
Diabetes Mellitus, Type 2 Edema Hemorrhage

[服務條款](#) | [隱私權政策](#) | [著作及商標](#) | [網站地圖](#)

©2016 亞諾法生技股份有限公司 Abnova Corporation. 版權所有.