



SZABO SCANDIC

Part of Europa Biosite

Produktinformation



Forschungsprodukte & Biochemikalien



Zellkultur & Verbrauchsmaterial



Diagnostik & molekulare Diagnostik



Laborgeräte & Service

Weitere Information auf den folgenden Seiten!
See the following pages for more information!



Lieferung & Zahlungsart

siehe unsere [Liefer- und Versandbedingungen](#)

Zuschläge

- Mindermengenzuschlag
- Trockeneiszuschlag
- Gefahrgutzuschlag
- Expressversand

SZABO-SCANDIC HandelsgmbH

Quellenstraße 110, A-1100 Wien

T. +43(0)1 489 3961-0

F. +43(0)1 489 3961-7

mail@szabo-scandic.com

www.szabo-scandic.com

[linkedin.com/company/szaboscandic](https://www.linkedin.com/company/szaboscandic)

CALU 293T Cell Transient Overexpression Lysate(Denatured)

Catalog # : H00000813-T01

規格 : [100 uL]

List All

Specification

Transfected Cell Line: 293T

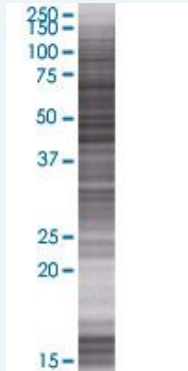
Plasmid: pCMV-CALU full-length

Host: Human

Theoretical MW (kDa): 37.1

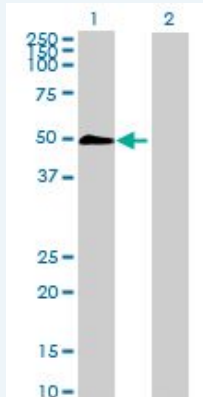
Quality Control Testing: Transient overexpression cell lysate was tested with Anti-CALU antibody (H00000813-B01) by Western Blots.

SDS-PAGE Gel



CALU transfected lysate.

Western Blot



Lane 1: CALU transfected lysate (37.1 KDa)

Lane 2: Non-transfected lysate.

Storage Buffer: 1X Sample Buffer (50 mM Tris-HCl, 2% SDS, 10% glycerol, 300 mM 2-mercaptoethanol, 0.01% Bromophenol blue)

Storage Instruction: Store at -80°C. Aliquot to avoid repeated freezing and thawing.

MSDS:  [Download](#)

Applications

Application Image

Western Blot

Western Blot

Gene Information

Entrez GeneID: [813](#)

GeneBank Accession#: [NM_001219](#)

Protein Accession#: [NP_001210](#)

Gene Name: CALU

Gene Alias: FLJ90608

Gene Description: calumenin

Omim ID: [603420](#)

Gene Ontology: [Hyperlink](#)

Gene Summary: The product of this gene is a calcium-binding protein localized in the endoplasmic reticulum (ER) and it is involved in such ER functions as protein folding and sorting. This protein belongs to a family of multiple EF-hand proteins (CERC) that include reticulocalbin, ERC-55, and Cab45 and the product of this gene. Alternatively spliced transcript variants encoding different isoforms have been identified. [provided by RefSeq]

Other Designations: crocalbin-like protein,multiple EF-hand protein

Related Disease

[Calcinosis](#) [Cardiovascular Diseases](#) [Cerebrovascular Accident](#) [Coronary Artery Disease](#) [Diabetes Mellitus, Type 2](#) [Edema](#) [Hemorrhage](#)