



# SZABO SCANDIC

Part of Europa Biosite

## Produktinformation



Forschungsprodukte & Biochemikalien



Zellkultur & Verbrauchsmaterial



Diagnostik & molekulare Diagnostik



Laborgeräte & Service

Weitere Information auf den folgenden Seiten!  
See the following pages for more information!



### Lieferung & Zahlungsart

siehe unsere [Liefer- und Versandbedingungen](#)

### Zuschläge

- Mindermengenzuschlag
- Trockeneiszuschlag
- Gefahrgutzuschlag
- Expressversand

### SZABO-SCANDIC HandelsgmbH

Quellenstraße 110, A-1100 Wien

T. +43(0)1 489 3961-0

F. +43(0)1 489 3961-7

[mail@szabo-scandic.com](mailto:mail@szabo-scandic.com)

[www.szabo-scandic.com](http://www.szabo-scandic.com)

[linkedin.com/company/szaboscandic](https://www.linkedin.com/company/szaboscandic) 

## CALU 293T Cell Transient Overexpression Lysate(Denatured)

Catalog # : H00000813-T02

規格 : [ 100 uL ]

List All

### Specification

**Transfected Cell Line:** 293T

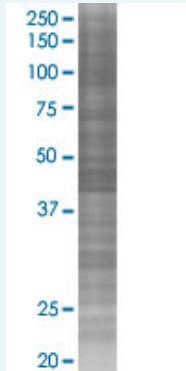
**Plasmid:** pCMV-CALU full-length

**Host:** Human

**Theoretical MW (kDa):** 37.1

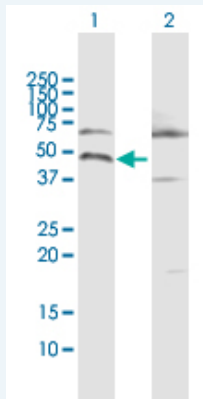
**Quality Control Testing:** Transient overexpression cell lysate was tested with Anti-CALU antibody (H00000813-B01P) by Western Blots.

#### SDS-PAGE Gel



CALU transfected lysate.

#### Western Blot



Lane 1: CALU transfected lysate ( 37.10 KDa)

Lane 2: Non-transfected lysate.

**Storage Buffer:** 1X Sample Buffer (50 mM Tris-HCl, 2% SDS, 10% glycerol, 300 mM 2-mercaptoethanol, 0.01% Bromophenol blue)

**Storage Instruction:** Store at -80°C. Aliquot to avoid repeated freezing and thawing.

**MSDS:**  [Download](#)

### Applications

## Western Blot

### Gene Information

Entrez GeneID: [813](#)

GeneBank Accession#: [NM\\_001219](#)

Protein Accession#: [NP\\_001210](#)

Gene Name: CALU

Gene Alias: FLJ90608

Gene Description: calumenin

Omim ID: [603420](#)

Gene Ontology: [Hyperlink](#)

**Gene Summary:** The product of this gene is a calcium-binding protein localized in the endoplasmic reticulum (ER) and it is involved in such ER functions as protein folding and sorting. This protein belongs to a family of multiple EF-hand proteins (CERC) that include reticulocalbin, ERC-55, and Cab45 and the product of this gene. Alternatively spliced transcript variants encoding different isoforms have been identified. [provided by RefSeq]

**Other Designations:** crocalbin-like protein,multiple EF-hand protein

### Related Disease

[Calcinosis](#) [Cardiovascular Diseases](#) [Cerebrovascular Accident](#) [Coronary Artery Disease](#) [Diabetes Mellitus, Type 2](#) [Edema](#) [Hemorrhage](#)

[服務條款](#) | [隱私權政策](#) | [著作及商標](#) | [網站地圖](#)

©2016 亞諾法生技股份有限公司 Abnova Corporation. 版權所有.