



# SZABO SCANDIC

Part of Europa Biosite

## Produktinformation



Forschungsprodukte & Biochemikalien



Zellkultur & Verbrauchsmaterial



Diagnostik & molekulare Diagnostik



Laborgeräte & Service

Weitere Information auf den folgenden Seiten!  
See the following pages for more information!



### Lieferung & Zahlungsart

siehe unsere [Liefer- und Versandbedingungen](#)

### Zuschläge

- Mindermengenzuschlag
- Trockeneiszuschlag
- Gefahrgutzuschlag
- Expressversand

### SZABO-SCANDIC HandelsgmbH

Quellenstraße 110, A-1100 Wien

T. +43(0)1 489 3961-0

F. +43(0)1 489 3961-7

[mail@szabo-scandic.com](mailto:mail@szabo-scandic.com)

[www.szabo-scandic.com](http://www.szabo-scandic.com)

[linkedin.com/company/szaboscandic](https://www.linkedin.com/company/szaboscandic) 

## CAMK2A MaxPab mouse polyclonal antibody (B01) MaxPab®

Catalog # : H00000815-B01

規格 : [ 50 uL ]

[List All](#)

### Specification

**Product Description:** Mouse polyclonal antibody raised against a full-length human CAMK2A protein.

**Immunogen:** CAMK2A (AAH40457, 1 a.a. ~ 478 a.a) full-length human protein.

**Sequence:**  
 MATITCTRFTEEYQLFEELGKGAFSVVRRVCVKVLQAGQEYAAKIINTKKLS  
 ARDHQKLEREARICRLLKHPNIVRLHDSISEEGHHYLIFDLVTGGELFEDIV  
 AREYYSEADASHCIQQILEAVLHCHQMVGWVHRDLKPENLLASKLKGAIV  
 KLADFGLAIEVEGEQQAWFGFAGTPGYLSPEVLRKDPYGKPVDLWACG  
 VILYILLVGYPPFWDEDQHRLYKQIKAGAYDFPSPEWDTVTPEAKDLINKM  
 LTINPSKRITAAEALKHPWISHRSTVASCMPHRQETVDCLKKFNARRKLKG  
 AILTMLATRNFGSGKSGGNKSDGVKESSESTNTTIEDEDTKVRKQEIHK  
 VTEQLIEAISNGDFESYTKMCDPGMTAFEPEALGNLVEGLDFHRFYFENL  
 WSRNSKPVHTTILNPHIILMGDESACIAYIRITQYLDAGGIPRTAQSEETRV  
 WHRRDGKWQIMVHFRSGAPSVLPH

**Host:** Mouse

**Reactivity:** Human

**Quality Control Testing:** Antibody reactive against mammalian transfected lysate.

**Storage Buffer:** No additive

**Storage Instruction:** Store at -20°C or lower. Aliquot to avoid repeated freezing and thawing.

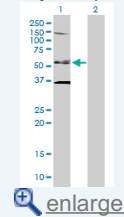
**Note:** For IHC and IF applications, antibody purification with Protein A will be needed prior to use.

**MSDS:** [Download](#)

**Datasheet:** [Download](#)

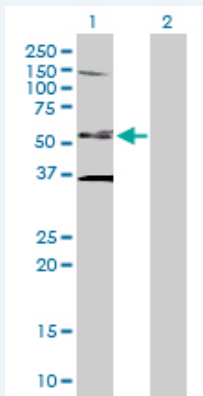
### Application Image

Western Blot (Transfected lysate)



### Applications

Western Blot (Transfected lysate)



Western Blot analysis of CAMK2A expression in transfected 293T cell line (H00000815-T04) by CAMK2A MaxPab polyclonal antibody.

Lane 1: CAMK2A transfected lysate(52.69 KDa).  
Lane 2: Non-transfected lysate.

 [Protocol Download](#)

## Gene Information

**Entrez GeneID:** [815](#)

**GeneBank Accession#:** [BC040457](#)

**Protein Accession#:** [AAH40457](#)

**Gene Name:** CAMK2A

**Gene Alias:** CAMKA,KIAA0968

**Gene Description:** calcium/calmodulin-dependent protein kinase II alpha

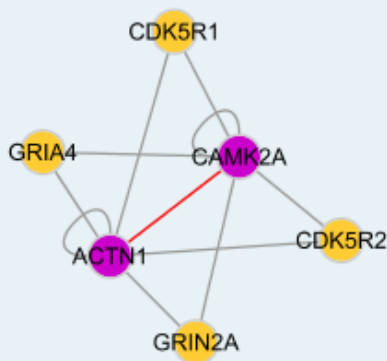
**Omim ID:** [114078](#)

**Gene Ontology:** [Hyperlink](#)

**Gene Summary:** The product of this gene belongs to the serine/threonine protein kinases family, and to the Ca(2+)/calmodulin-dependent protein kinases subfamily. Calcium signaling is crucial for several aspects of plasticity at glutamatergic synapses. This calcium calmodulin-dependent protein kinase is composed of four different chains: alpha, beta, gamma, and delta. The alpha chain encoded by this gene is required for hippocampal long-term potentiation (LTP) and spatial learning. In addition to its calcium-calmodulin (CaM)-dependent activity, this protein can undergo autophosphorylation, resulting in CaM-independent activity. Two transcript variants encoding distinct isoforms have been identified for this gene. [provided by RefSeq]

**Other Designations:** CaM kinase II alpha subunit,CaM-kinase II alpha chain,CaMK-II alpha subunit,CaMKIIalpha,OTTHUMP00000165787,OTTHUMP00000165788,calcium/calmodulin-dependent protein kinase (CaM kinase) II alpha,calcium/calmodulin-dependent protein kinase II alpha-B subunit

## Interactome



## Gene Pathway

---

[Calcium signaling pathway](#) [ErbB signaling pathway](#) [Glioma](#) [GnRH signaling pathway](#)  
[Long-term potentiation](#) [Melanogenesis](#) [Neurotrophin signaling pathway](#)  
[Olfactory transduction](#) [Wnt signaling pathway](#)

## Related Disease

---

[Bipolar Disorder](#) [Cognition](#) [Genetic Predisposition to Disease](#) [Schizophrenia](#) [Schizophrenia](#)  
[Schizophrenic Psychology](#) [Tobacco Use Disorder](#) [Weight Gain](#)

---

[服務條款](#) | [隱私權政策](#) | [著作及商標](#) | [網站地圖](#)

©2016 亞諾法生技股份有限公司 Abnova Corporation. 版權所有.