



SZABO SCANDIC

Part of Europa Biosite

Produktinformation



Forschungsprodukte & Biochemikalien



Zellkultur & Verbrauchsmaterial



Diagnostik & molekulare Diagnostik



Laborgeräte & Service

Weitere Information auf den folgenden Seiten!
See the following pages for more information!



Lieferung & Zahlungsart

siehe unsere [Liefer- und Versandbedingungen](#)

Zuschläge

- Mindermengenzuschlag
- Trockeneiszuschlag
- Gefahrgutzuschlag
- Expressversand

SZABO-SCANDIC HandelsgmbH

Quellenstraße 110, A-1100 Wien

T. +43(0)1 489 3961-0

F. +43(0)1 489 3961-7

mail@szabo-scandic.com

www.szabo-scandic.com

[linkedin.com/company/szaboscandic](https://www.linkedin.com/company/szaboscandic) 

CAMK2A purified MaxPab rabbit polyclonal antibody (D01P) MaxPab®

Catalog # : H00000815-D01P

規格 : [100 ug]

[List All](#)

Specification

Product Description: Rabbit polyclonal antibody raised against a full-length human CAMK2A protein.

Immunogen: CAMK2A (AAH40457.1, 1 a.a. ~ 478 a.a) full-length human protein.

Sequence:
 MATITCTRFTEEYQLFEELGKGAFSVVRRVCVKVLQAGQEYAAKIINTKKLS
 ARDHQKLEREARICRLLKHPNIVRLHDSISEEGHHYLIFDLVTGGELFEDIV
 AREYYSEADASHCIQQILEAVLHCHQMVGWVHRDLKPENLLASKLKGAAV
 KLADFGLAIEVEGEQQAWFGFAGTPGYLSPEVLRKDPYGGKPVDLWACG
 VILYILLVGYPPFWDEDQHRLYKQIKAGAYDFPSPEWDTVTPEAKDLINKM
 LTINPSKRITAAEALKHPWISHRSTVASCMRQETVDCLKKNARRKLG
 AILTTMLATRNFGSGKSGGNKSDGVKESSESTNTTIEDEDTKVRKQEI
 VTEQLIEAISNGDFESYTKMCDPGMTAFEPEALGNLVEGLDFHRFYFENL
 WSRNSKPVHTTILNPHIILMGDESACIAYIRITQYLDAGGIPRTAQSEETRV
 WHRRDGKWQVHFHRSGAPSVLPH

Host: Rabbit

Reactivity: Human

Quality Control Testing: Antibody reactive against mammalian transfected lysate.

Storage Buffer: In 1x PBS, pH 7.4

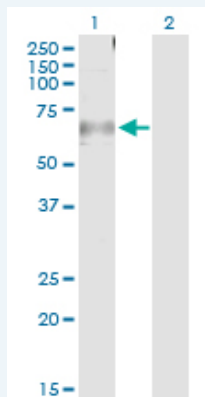
Storage Instruction: Store at -20°C or lower. Aliquot to avoid repeated freezing and thawing.

MSDS: [Download](#)

Datasheet: [Download](#)

Applications

Western Blot (Transfected lysate)

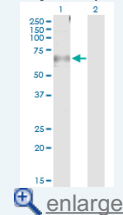


Western Blot analysis of CAMK2A expression in transfected 293T cell line (H00000815-T01) by CAMK2A MaxPab polyclonal antibody.

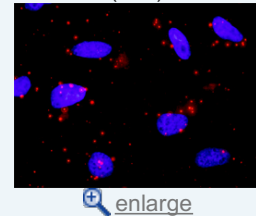
Lane 1: CAMK2A transfected lysate(52.69 KDa).
 Lane 2: Non-transfected lysate.

Application Image

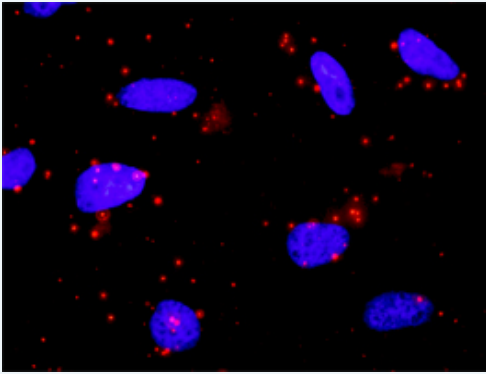
Western Blot (Transfected lysate)



In situ Proximity Ligation Assay (Cell)



In situ Proximity Ligation Assay (Cell)



Proximity Ligation Analysis of protein-protein interactions between CAMK2A and SMAD2. HeLa cells were stained with anti-CAMK2A rabbit purified polyclonal 1:1200 and anti-SMAD2 mouse monoclonal antibody 1:50. Each red dot represents the detection of protein-protein interaction complex, and nuclei were counterstained with DAPI (blue).

Gene Information

Entrez GeneID: [815](#)

GeneBank Accession#: [BC040457](#)

Protein Accession#: [AAH40457.1](#)

Gene Name: CAMK2A

Gene Alias: CAMKA,KIAA0968

Gene Description: calcium/calmodulin-dependent protein kinase II alpha

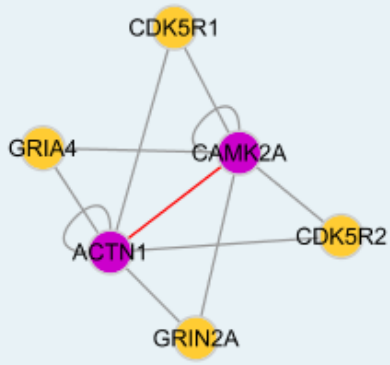
Omim ID: [114078](#)

Gene Ontology: [Hyperlink](#)

Gene Summary: The product of this gene belongs to the serine/threonine protein kinases family, and to the Ca(2+)/calmodulin-dependent protein kinases subfamily. Calcium signaling is crucial for several aspects of plasticity at glutamatergic synapses. This calcium calmodulin-dependent protein kinase is composed of four different chains: alpha, beta, gamma, and delta. The alpha chain encoded by this gene is required for hippocampal long-term potentiation (LTP) and spatial learning. In addition to its calcium-calmodulin (CaM)-dependent activity, this protein can undergo autophosphorylation, resulting in CaM-independent activity. Two transcript variants encoding distinct isoforms have been identified for this gene. [provided by RefSeq]

Other Designations: CaM kinase II alpha subunit,CaM-kinase II alpha chain,CaMK-II alpha subunit,CaMKIIalpha,OTTHUMP00000165787,OTTHUMP00000165788,calcium/calmodulin-dependent protein kinase (CaM kinase) II alpha,calcium/calmodulin-dependent protein kinase II alpha-B subunit

Interactome



Gene Pathway

[Calcium signaling pathway](#) [ErbB signaling pathway](#) [Glioma](#) [GnRH signaling pathway](#)
[Long-term potentiation](#) [Melanogenesis](#) [Neurotrophin signaling pathway](#)
[Olfactory transduction](#) [Wnt signaling pathway](#)

Related Disease

[Bipolar Disorder](#) [Cognition](#) [Genetic Predisposition to Disease](#) [Schizophrenia](#) [Schizophrenia](#)
[Schizophrenic Psychology](#) [Tobacco Use Disorder](#) [Weight Gain](#)

[服務條款](#) | [隱私權政策](#) | [著作及商標](#) | [網站地圖](#)

©2016 亞諾法生技股份有限公司 Abnova Corporation. 版權所有.