



SZABO SCANDIC

Part of Europa Biosite

Produktinformation



Forschungsprodukte & Biochemikalien



Zellkultur & Verbrauchsmaterial



Diagnostik & molekulare Diagnostik



Laborgeräte & Service

Weitere Information auf den folgenden Seiten!
See the following pages for more information!



Lieferung & Zahlungsart

siehe unsere [Liefer- und Versandbedingungen](#)

Zuschläge

- Mindermengenzuschlag
- Trockeneiszuschlag
- Gefahrgutzuschlag
- Expressversand

SZABO-SCANDIC HandelsgmbH

Quellenstraße 110, A-1100 Wien

T. +43(0)1 489 3961-0

F. +43(0)1 489 3961-7

mail@szabo-scandic.com

www.szabo-scandic.com

[linkedin.com/company/szaboscandic](https://www.linkedin.com/company/szaboscandic)

CAMK2A monoclonal antibody (M01), clone 2C4

Catalog # : H00000815-M01

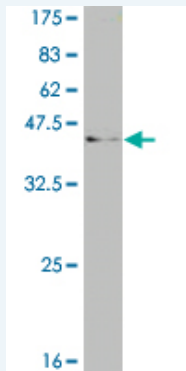
規格 : [100 ug]

[List All](#)

Specification

Product Description:	Mouse monoclonal antibody raised against a partial recombinant CAMK2A.
Immunogen:	CAMK2A (AAH40457, 305 a.a. ~ 410 a.a) partial recombinant protein with GST tag. MW of the GST tag alone is 26 KDa.
Sequence:	TTMLATRNFGSGGKSGGNKKSVDGVKESSESTNTTIEDEDTKVRKQEIIKVT EQLIEAISNGDFESYTKMCDPGMTAFEPALGNLVEGLDFHRFYFENLW SRNSKPV
Host:	Mouse
Reactivity:	Human, Rat
Isotype:	IgG2a Kappa

Quality Control Testing: Antibody Reactive Against Recombinant Protein.



Western Blot detection against Immunogen (37.29 KDa) .

Storage Buffer: In 1x PBS, pH 7.4

Storage Instruction: Store at -20°C or lower. Aliquot to avoid repeated freezing and thawing.

MSDS: [Download](#)

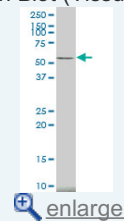
Datasheet: [Download](#)

Applications

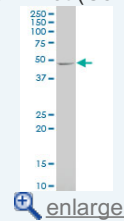
Western Blot (Tissue lysate)

Application Image

Western Blot (Tissue lysate)

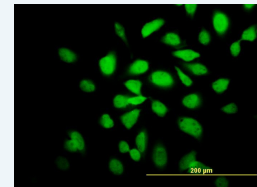


Western Blot (Cell lysate)

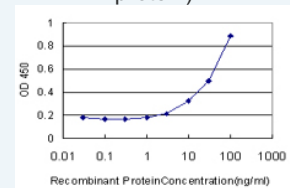


Western Blot (Recombinant protein)

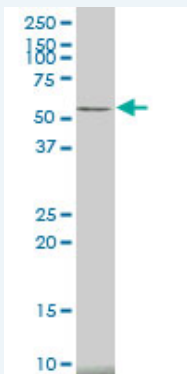
Immunofluorescence



Sandwich ELISA (Recombinant protein)



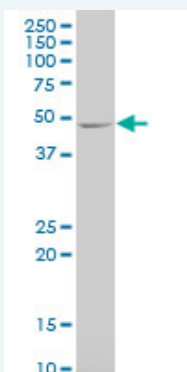
ELISA



CAMK2A monoclonal antibody (M01), clone 2C4. Western Blot analysis of CAMK2A expression in human stomach.

[Protocol Download](#)

Western Blot (Cell lysate)



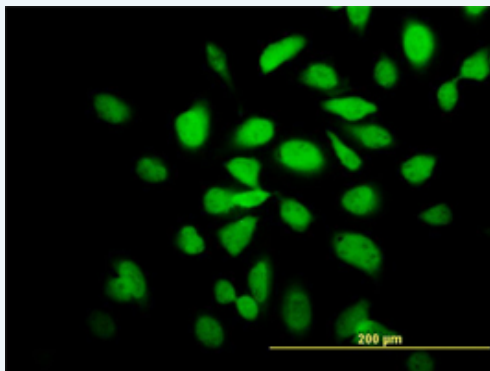
CAMK2A monoclonal antibody (M01), clone 2C4. Western Blot analysis of CAMK2A expression in RIN-m5F.

[Protocol Download](#)

Western Blot (Recombinant protein)

[Protocol Download](#)

Immunofluorescence

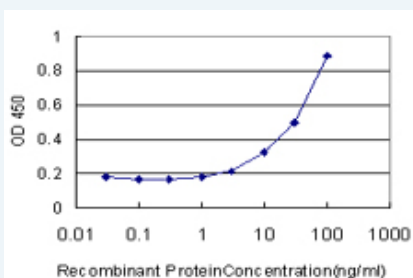


[enlarge this image](#)

Immunofluorescence of monoclonal antibody to CAMK2A on HeLa cell. [antibody concentration 10 ug/ml]

[Protocol Download](#)

Sandwich ELISA (Recombinant protein)



Detection limit for recombinant GST tagged CAMK2A is approximately 3ng/ml as a capture antibody.

ELISA

Gene Information

Entrez GeneID: 815

GeneBank Accession#: BC040457

Protein Accession#: AAH40457

Gene Name: CAMK2A

Gene Alias: CAMKA,KIAA0968

Gene Description: calcium/calmodulin-dependent protein kinase II alpha

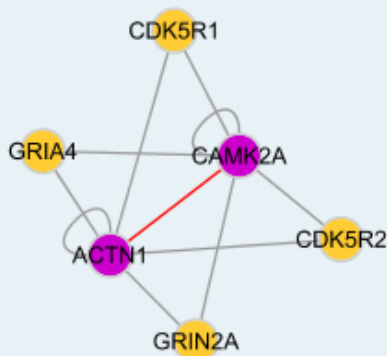
Omim ID: 114078

Gene Ontology: [Hyperlink](#)

Gene Summary: The product of this gene belongs to the serine/threonine protein kinases family, and to the Ca(2+)/calmodulin-dependent protein kinases subfamily. Calcium signaling is crucial for several aspects of plasticity at glutamatergic synapses. This calcium calmodulin-dependent protein kinase is composed of four different chains: alpha, beta, gamma, and delta. The alpha chain encoded by this gene is required for hippocampal long-term potentiation (LTP) and spatial learning. In addition to its calcium-calmodulin (CaM)-dependent activity, this protein can undergo autophosphorylation, resulting in CaM-independent activity. Two transcript variants encoding distinct isoforms have been identified for this gene. [provided by RefSeq]

Other Designations: CaM kinase II alpha subunit,CaM-kinase II alpha chain,CaMK-II alpha subunit,CaMKIIalpha,OTTHUMP00000165787,OTTHUMP00000165788,calcium/calmodulin-dependent protein kinase (CaM kinase) II alpha,calcium/calmodulin-dependent protein kinase II alpha-B subunit

Interactome



Gene Pathway

[Calcium signaling pathway](#) [ErbB signaling pathway](#) [Glioma](#) [GnRH signaling pathway](#)
[Long-term potentiation](#) [Melanogenesis](#) [Neurotrophin signaling pathway](#)
[Olfactory transduction](#) [Wnt signaling pathway](#)

Related Disease

[Bipolar Disorder](#) [Cognition](#) [Genetic Predisposition to Disease](#) [Schizophrenia](#) [Schizophrenia](#)
[Schizophrenic Psychology](#) [Tobacco Use Disorder](#) [Weight Gain](#)

[服務條款](#) | [隱私權政策](#) | [著作及商標](#) | [網站地圖](#)

©2016 亞諾法生技股份有限公司 Abnova Corporation. 版權所有.