



SZABO SCANDIC

Part of Europa Biosite

Produktinformation



Forschungsprodukte & Biochemikalien



Zellkultur & Verbrauchsmaterial



Diagnostik & molekulare Diagnostik



Laborgeräte & Service

Weitere Information auf den folgenden Seiten!
See the following pages for more information!



Lieferung & Zahlungsart

siehe unsere [Liefer- und Versandbedingungen](#)

Zuschläge

- Mindermengenzuschlag
- Trockeneiszuschlag
- Gefahrgutzuschlag
- Expressversand

SZABO-SCANDIC HandelsgmbH

Quellenstraße 110, A-1100 Wien

T. +43(0)1 489 3961-0

F. +43(0)1 489 3961-7

mail@szabo-scandic.com

www.szabo-scandic.com

[linkedin.com/company/szaboscandic](https://www.linkedin.com/company/szaboscandic) 

CAMK2A monoclonal antibody (M02), clone 1H7

Catalog # : H00000815-M02

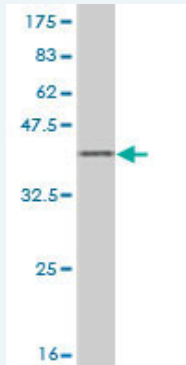
規格 : [100 ug]

[List All](#)

Specification

| | |
|-----------------------------|---|
| Product Description: | Mouse monoclonal antibody raised against a partial recombinant CAMK2A. |
| Immunogen: | CAMK2A (AAH40457, 305 a.a. ~ 410 a.a) partial recombinant protein with GST tag. MW of the GST tag alone is 26 KDa. |
| Sequence: | TTMLATRNFSGGKSGGNKKS DGVKESSESTNTTIEDEDTKVRKQEIIKVT EQLIEAISNGDFESYTKMCDPGMTAFEPEALGNLVEGLDFHRFYFENLW SRNSKPV |
| Host: | Mouse |
| Reactivity: | Human |
| Isotype: | IgG2a Kappa |

Quality Control Testing: Antibody Reactive Against Recombinant Protein.



Western Blot detection against Immunogen (37.29 KDa) .

Storage Buffer: In 1x PBS, pH 7.4

Storage Instruction: Store at -20°C or lower. Aliquot to avoid repeated freezing and thawing.

MSDS: [Download](#)

Datasheet: [Download](#)

Applications

Western Blot (Recombinant protein)

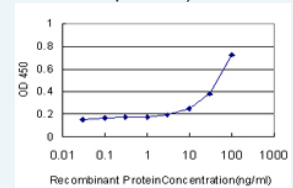
[Protocol Download](#)

Sandwich ELISA (Recombinant protein)

Application Image

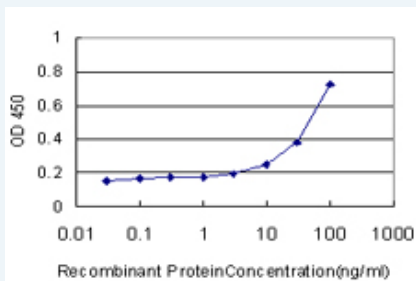
Western Blot (Recombinant protein)

Sandwich ELISA (Recombinant protein)




[enlarge](#)

ELISA



Detection limit for recombinant GST tagged CAMK2A is approximately 3ng/ml as a capture antibody.

 [Protocol Download](#)

ELISA

Gene Information

Entrez GeneID: [815](#)

GeneBank [BC040457](#)

Accession#:

Protein [AAH40457](#)

Accession#:

Gene Name: CAMK2A

Gene Alias: CAMKA, KIAA0968

Gene Description: calcium/calmodulin-dependent protein kinase II alpha

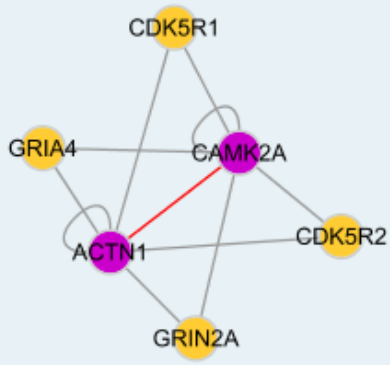
Omim ID: [114078](#)

Gene Ontology: [Hyperlink](#)

Gene Summary: The product of this gene belongs to the serine/threonine protein kinases family, and to the Ca(2+)/calmodulin-dependent protein kinases subfamily. Calcium signaling is crucial for several aspects of plasticity at glutamatergic synapses. This calcium calmodulin-dependent protein kinase is composed of four different chains: alpha, beta, gamma, and delta. The alpha chain encoded by this gene is required for hippocampal long-term potentiation (LTP) and spatial learning. In addition to its calcium-calmodulin (CaM)-dependent activity, this protein can undergo autophosphorylation, resulting in CaM-independent activity. Two transcript variants encoding distinct isoforms have been identified for this gene. [provided by RefSeq]

Other Designations: CaM kinase II alpha subunit, CaM-kinase II alpha chain, CaMK-II alpha subunit, CaMKIIalpha, OTTHUMP00000165787, OTTHUMP00000165788, calcium/calmodulin-dependent protein kinase (CaM kinase) II alpha, calcium/calmodulin-dependent protein kinase II alpha-B subunit

Interactome



Gene Pathway

[Calcium signaling pathway](#) [ErbB signaling pathway](#) [Glioma](#) [GnRH signaling pathway](#)
[Long-term potentiation](#) [Melanogenesis](#) [Neurotrophin signaling pathway](#)
[Olfactory transduction](#) [Wnt signaling pathway](#)

Related Disease

[Bipolar Disorder](#) [Cognition](#) [Genetic Predisposition to Disease](#) [Schizophrenia](#) [Schizophrenia](#)
[Schizophrenic Psychology](#) [Tobacco Use Disorder](#) [Weight Gain](#)

[服務條款](#) | [隱私權政策](#) | [著作及商標](#) | [網站地圖](#)

©2016 亞諾法生技股份有限公司 Abnova Corporation. 版權所有.