



SZABO SCANDIC

Part of Europa Biosite

Produktinformation



Forschungsprodukte & Biochemikalien



Zellkultur & Verbrauchsmaterial



Diagnostik & molekulare Diagnostik



Laborgeräte & Service

Weitere Information auf den folgenden Seiten!
See the following pages for more information!



Lieferung & Zahlungsart

siehe unsere [Liefer- und Versandbedingungen](#)

Zuschläge

- Mindermengenzuschlag
- Trockeneiszuschlag
- Gefahrgutzuschlag
- Expressversand

SZABO-SCANDIC HandelsgmbH

Quellenstraße 110, A-1100 Wien

T. +43(0)1 489 3961-0

F. +43(0)1 489 3961-7

mail@szabo-scandic.com

www.szabo-scandic.com

[linkedin.com/company/szaboscandic](https://www.linkedin.com/company/szaboscandic) 

CAMK2A monoclonal antibody (M04), clone 2C11

Catalog # : H00000815-M04

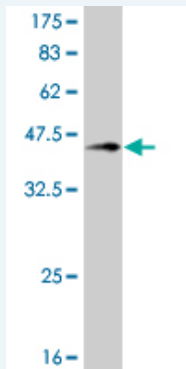
規格 : [100 ug]

[List All](#)

Specification

Product Description:	Mouse monoclonal antibody raised against a partial recombinant CAMK2A.
Immunogen:	CAMK2A (AAH40457, 305 a.a. ~ 410 a.a) partial recombinant protein with GST tag. MW of the GST tag alone is 26 KDa.
Sequence:	TTMLATRNFSGGKSGGNKKSVDGVKESSESTNTTIEDEDTKVRKQEIHKVT EQLIEAISNGDFESYTKMCDPGMTAFEPEALGNLVEGLDFHRFYFENLW SRNSKPV
Host:	Mouse
Reactivity:	Human
Isotype:	IgG2b Kappa

Quality Control Testing: Antibody Reactive Against Recombinant Protein.



Western Blot detection against Immunogen (37.29 KDa) .

Storage Buffer: In 1x PBS, pH 7.4

Storage Instruction: Store at -20°C or lower. Aliquot to avoid repeated freezing and thawing.

MSDS: [Download](#)

Datasheet: [Download](#)

Applications

Western Blot (Recombinant protein)

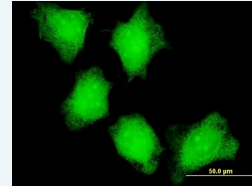
[Protocol Download](#)

Immunofluorescence

Application Image

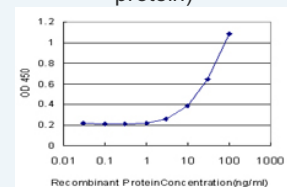
Western Blot (Recombinant protein)

Immunofluorescence



[enlarge](#)

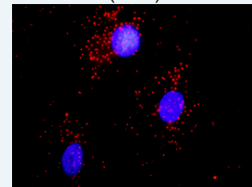
Sandwich ELISA (Recombinant protein)



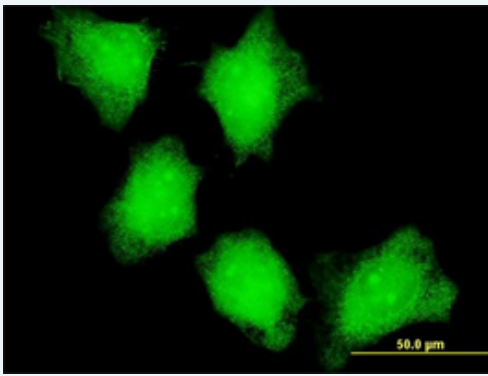
[enlarge](#)

ELISA

In situ Proximity Ligation Assay (Cell)



[enlarge](#)

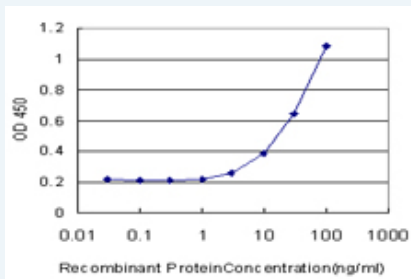


[enlarge this image](#)

Immunofluorescence of monoclonal antibody to CAMK2A on HeLa cell . [antibody concentration 10 ug/ml]

[Protocol Download](#)

Sandwich ELISA (Recombinant protein)

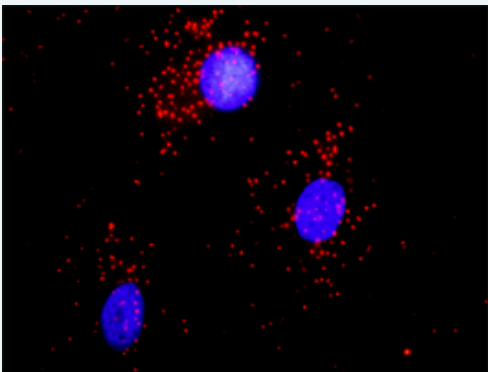


Detection limit for recombinant GST tagged CAMK2A is approximately 1ng/ml as a capture antibody.

[Protocol Download](#)

ELISA

In situ Proximity Ligation Assay (Cell)



Proximity Ligation Analysis of protein-protein interactions between ACTN1 and CAMK2A. HeLa cells were stained with anti-ACTN1 rabbit purified polyclonal 1:1200 and anti-CAMK2A mouse monoclonal antibody 1:50. Each red dot represents the detection of protein-protein interaction complex, and nuclei were counterstained with DAPI (blue).

Gene Information

Entrez GeneID: [815](#)

GeneBank [BC040457](#)

Accession#:

Protein [AAH40457](#)

Accession#:

Gene Name: CAMK2A

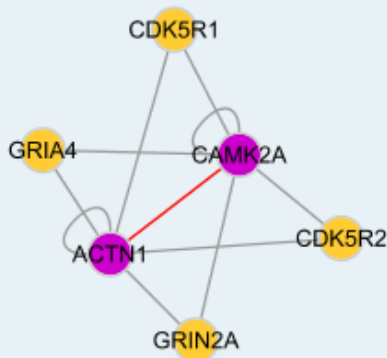
Gene Alias: CAMKA, KIAA0968

Gene calcium/calmodulin-dependent protein kinase II alpha

Description:**Omim ID:** [114078](#)**Gene Ontology:** [Hyperlink](#)

Gene Summary: The product of this gene belongs to the serine/threonine protein kinases family, and to the Ca(2+)/calmodulin-dependent protein kinases subfamily. Calcium signaling is crucial for several aspects of plasticity at glutamatergic synapses. This calcium calmodulin-dependent protein kinase is composed of four different chains: alpha, beta, gamma, and delta. The alpha chain encoded by this gene is required for hippocampal long-term potentiation (LTP) and spatial learning. In addition to its calcium-calmodulin (CaM)-dependent activity, this protein can undergo autophosphorylation, resulting in CaM-independent activity. Two transcript variants encoding distinct isoforms have been identified for this gene. [provided by RefSeq]

Other Designations: CaM kinase II alpha subunit,CaM-kinase II alpha chain,CaMK-II alpha subunit,CaMKIINalpha,OTTHUMP00000165787,OTTHUMP00000165788,calcium/calmodulin-dependent protein kinase (CaM kinase) II alpha,calcium/calmodulin-dependent protein kinase II alpha-B subunit

Interactome**Gene Pathway**

[Calcium signaling pathway](#) [ErbB signaling pathway](#) [Glioma](#) [GnRH signaling pathway](#) [Long-term potentiation](#) [Melanogenesis](#) [Neurotrophin signaling pathway](#) [Olfactory transduction](#) [Wnt signaling pathway](#)

Related Disease

[Bipolar Disorder](#) [Cognition](#) [Genetic Predisposition to Disease](#) [Schizophrenia](#) [Schizophrenia](#) [Schizophrenic Psychology](#) [Tobacco Use Disorder](#) [Weight Gain](#)