



# SZABO SCANDIC

Part of Europa Biosite

## Produktinformation



Forschungsprodukte & Biochemikalien



Zellkultur & Verbrauchsmaterial



Diagnostik & molekulare Diagnostik



Laborgeräte & Service

Weitere Information auf den folgenden Seiten!  
See the following pages for more information!



### Lieferung & Zahlungsart

siehe unsere [Liefer- und Versandbedingungen](#)

### Zuschläge

- Mindermengenzuschlag
- Trockeneiszuschlag
- Gefahrgutzuschlag
- Expressversand

### SZABO-SCANDIC HandelsgmbH

Quellenstraße 110, A-1100 Wien

T. +43(0)1 489 3961-0

F. +43(0)1 489 3961-7

[mail@szabo-scandic.com](mailto:mail@szabo-scandic.com)

[www.szabo-scandic.com](http://www.szabo-scandic.com)

[linkedin.com/company/szaboscandic](https://www.linkedin.com/company/szaboscandic) 

## CAMK2B MaxPab mouse polyclonal antibody (B01) MaxPab®

Catalog # : H00000816-B01

規格 : [ 50 uL ]

[List All](#)

### Specification

**Product Description:** Mouse polyclonal antibody raised against a full-length human CAMK2B protein.

**Immunogen:** CAMK2B (NP\_742078.1, 1 a.a. ~ 503 a.a) full-length human protein.

**Sequence:**  
 MATTVTCTRFTDEYQLYEDIGKGAFSVRRCVKLCTGHEYAAKIINTKKL  
 SARDHQKLEREARICRLLKHSNIVRLHDSISEEGFHLYVFDLVTGGELFED  
 IVAREYYSEADASHCIQQILEAVLHCHQMGVVHRDLKPENLLASKCKGAA  
 VKLADFGLAIEVQGDQQAWFGFAGTPGYLSPEVLRKEAYGKPVDIWAC  
 GVILYILLVGYPPFWDEDQHKLYQQIKAGAYDFPSPEWDTVTPEAKNLIN  
 QMLTINPAKRITAEALKHPWVCQRSTVASMMHRQETVECLKKFNARRK  
 LKGAILTTMLATRNFSAAKSLLNKKADGVKPKQTNSTKNSAAATSPKGTLP  
 PAALESSDSANTTIEDEDAKARKQEIIKTTEQLIEAVNNGDFEAYAKICDPG  
 LTSFEPEALGNLVEGMDFHRFYFENLLAKNSKPIHTTILNPHVHVIGEDAA  
 CIAYIRLTQYIDGQGRPRTSQSEETRWWHRRDGGKWQMVHFCSGAPVA  
 PLQ

**Host:** Mouse

**Reactivity:** Human

**Quality Control Testing:** Antibody reactive against mammalian transfected lysate.

**Storage Buffer:** No additive

**Storage Instruction:** Store at -20°C or lower. Aliquot to avoid repeated freezing and thawing.

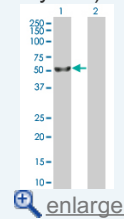
**Note:** For IHC and IF applications, antibody purification with Protein A will be needed prior to use.


**MSDS:**  [Download](#)

**Datasheet:**  [Download](#)

### Application Image

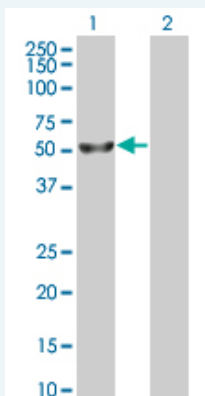
Western Blot (Transfected lysate)



 [enlarge](#)

### Applications

Western Blot (Transfected lysate)



Western Blot analysis of CAMK2B expression in transfected 293T cell line (H00000816-

T01) by CAMK2B MaxPab polyclonal antibody.

Lane 1: CAMK2B transfected lysate(55.33 KDa).

Lane 2: Non-transfected lysate.

 [Protocol Download](#)

---

## Gene Information

---

**Entrez GeneID:** [816](#)

---

**GeneBank** [NM\\_172081.1](#)

**Accession#:**

---

**Protein** [NP\\_742078.1](#)

**Accession#:**

---

**Gene Name:** CAMK2B

---

**Gene Alias:** CAM2,CAMK2,CAMKB,MGC29528

---

**Gene** calcium/calmodulin-dependent protein kinase II beta

**Description:**

---

**Omim ID:** [607707](#)

---

**Gene Ontology:** [Hyperlink](#)

---

**Gene Summary:** The product of this gene belongs to the serine/threonine protein kinase family and to the Ca(2+)/calmodulin-dependent protein kinase subfamily. Calcium signaling is crucial for several aspects of plasticity at glutamatergic synapses. In mammalian cells, the enzyme is composed of four different chains: alpha, beta, gamma, and delta. The product of this gene is a beta chain. It is possible that distinct isoforms of this chain have different cellular localizations and interact differently with calmodulin. Eight transcript variants encoding eight distinct isoforms have been identified for this gene. [provided by RefSeq]

---

**Other Designations:** CaM kinase II beta subunit,CaM-kinase II beta chain,CaMK-II beta subunit,OTTHUMP00000159355,OTTHUMP00000159356,calcium/calmodulin-dependent protein kinase (CaM kinase) II beta,calcium/calmodulin-dependent protein kinase type II beta chain,proline rich cal

---

## Gene Pathway

---

[Calcium signaling pathway](#) [ErbB signaling pathway](#) [Glioma](#) [GnRH signaling pathway](#)

[Long-term potentiation](#) [Melanogenesis](#) [Neurotrophin signaling pathway](#)

[Olfactory transduction](#) [Wnt signaling pathway](#)

---

## Related Disease

---

[Attention Deficit Disorder with Hyperactivity](#) [Autistic Disorder](#) [Cognition](#) [NARP](#)

[Schizophrenia](#) [Schizophrenia](#) [Schizophrenic Psychology](#) [Tobacco Use Disorder](#)

[Weight Gain](#)

---

[服務條款](#) | [隱私權政策](#) | [著作及商標](#) | [網站地圖](#)

©2016 亞諾法生技股份有限公司 Abnova Corporation. 版權所有.