



SZABO SCANDIC

Part of Europa Biosite

Produktinformation



Forschungsprodukte & Biochemikalien



Zellkultur & Verbrauchsmaterial



Diagnostik & molekulare Diagnostik



Laborgeräte & Service

Weitere Information auf den folgenden Seiten!
See the following pages for more information!



Lieferung & Zahlungsart

siehe unsere [Liefer- und Versandbedingungen](#)

Zuschläge

- Mindermengenzuschlag
- Trockeneiszuschlag
- Gefahrgutzuschlag
- Expressversand

SZABO-SCANDIC HandelsgmbH

Quellenstraße 110, A-1100 Wien

T. +43(0)1 489 3961-0

F. +43(0)1 489 3961-7

mail@szabo-scandic.com

www.szabo-scandic.com

[linkedin.com/company/szaboscandic](https://www.linkedin.com/company/szaboscandic) 

CAMK2B monoclonal antibody (M04), clone S11

Catalog # : H00000816-M04

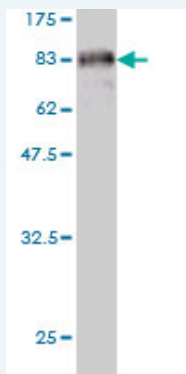
規格 : [100 ug]

[List All](#)

Specification

| | |
|-----------------------------|---------------------------------------------------------------------------------------------------------------------------------------------------------------------------------------------------------------------------------------------------------------------------------------------------------------------------------------------------------------------------------------------------------------------------------------------------------------------------------------------------------------------------------------------------------------|
| Product Description: | Mouse monoclonal antibody raised against a full length recombinant CAMK2B. |
| Immunogen: | CAMK2B (AAH19070.1, 1 a.a. ~ 503 a.a) full-length recombinant protein with GST tag. MW of the GST tag alone is 26 KDa. |
| Sequence: | MATTVTCTRTFDEYQLYEDIGKGAFSWRRCVKLCTGHEYAAKIINTKKL SARDHQKLREARICRLLKHSNIVRLHDSISEEGFHLYVFDLVTGGELFED IVAREYYSEADASHCIQQILEAVLHCHQMGVVHRDLKPENLLLASKCKGAA VKLADFGLAIEVQGDQQAWFGFAGTPGYLSPEVLRKEAYGKPVDIWAC GVILYILLVGYPWFDEDEDQHKLYQQIKAGAYDFPSPWDTVTPEAKNLIN QMLTINPAKRITAEALKHPWVCQRSTVASMMHRQETVECLKKFNARRK LKGAILTTMLATRNFSAAKSLLNKKADGVKPKQTNSTKNSAAATSPKGTLP PAALESSDSANTTIEDEDAKARKQEIKTTEQLIEAVNNGDFEAYAKICDPG LTSFEPEALGNLVEGMDFHRFYFENLLAKNSKPIHTTILNPHVHVIGEDAA CIAYIRLTQYIDGQGRPRTSQSEETRVWHRRDQKQWQNVHFHCSGAPVA PLQ |
| Host: | Mouse |
| Reactivity: | Human |
| Isotype: | IgG1 Kappa |

Quality Control Testing: Antibody Reactive Against Recombinant Protein.



Western Blot detection against Immunogen (81.07 KDa) .

Storage Buffer: In 1x PBS, pH 7.4

Storage Instruction: Store at -20°C or lower. Aliquot to avoid repeated freezing and thawing.

MSDS: [Download](#)

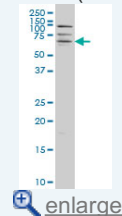
Datasheet: [Download](#)

Applications

Western Blot (Cell lysate)

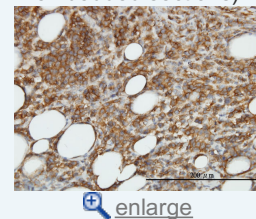
Application Image

Western Blot (Cell lysate)

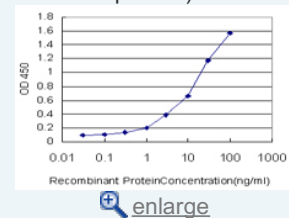


Western Blot (Recombinant protein)

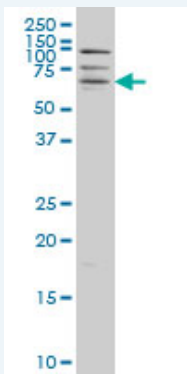
Immunohistochemistry (Formalin/PFA-fixed paraffin-embedded sections)



Sandwich ELISA (Recombinant protein)



ELISA



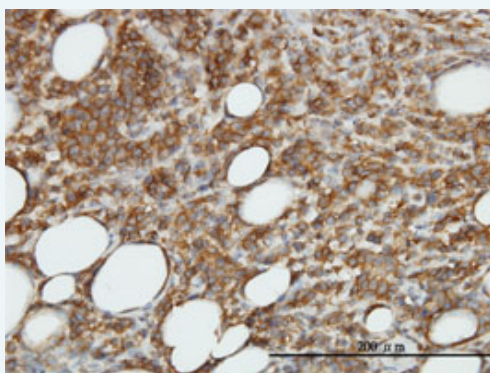
CAMK2B monoclonal antibody (M04), clone S11 Western Blot analysis of CAMK2B expression in HeLa S3 NE (Cat # L013V3).

[Protocol Download](#)

Western Blot (Recombinant protein)

[Protocol Download](#)

Immunohistochemistry (Formalin/PFA-fixed paraffin-embedded sections)

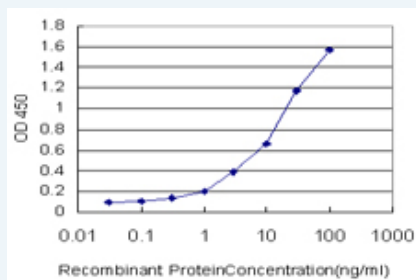


[enlarge this image](#)

Immunoperoxidase of monoclonal antibody to CAMK2B on formalin-fixed paraffin-embedded human malignant lymphoma, diffuse large B. [antibody concentration 3 ug/ml]

[Protocol Download](#)

Sandwich ELISA (Recombinant protein)



Detection limit for recombinant GST tagged CAMK2B is approximately 0.3ng/ml as a capture antibody.

[Protocol Download](#)

ELISA

Gene Information

Entrez GeneID: [816](#)

GeneBank [BC019070](#)

Accession#:

Protein [AAH19070.1](#)

Accession#:

Gene Name: CAMK2B

Gene Alias: CAM2,CAMK2,CAMKB,MGC29528

Gene calcium/calmodulin-dependent protein kinase II beta

Description:

Omim ID: [607707](#)

Gene Ontology: [Hyperlink](#)

Gene Summary: The product of this gene belongs to the serine/threonine protein kinase family and to the Ca(2+)/calmodulin-dependent protein kinase subfamily. Calcium signaling is crucial for several aspects of plasticity at glutamatergic synapses. In mammalian cells, the enzyme is composed of four different chains: alpha, beta, gamma, and delta. The product of this gene is a beta chain. It is possible that distinct isoforms of this chain have different cellular localizations and interact differently with calmodulin. Eight transcript variants encoding eight distinct isoforms have been identified for this gene. [provided by RefSeq]

Other Designations: CaM kinase II beta subunit, CaM-kinase II beta chain, CaMK-II beta subunit, OTTHUMP00000159355, OTTHUMP00000159356, calcium/calmodulin-dependent protein kinase (CaM kinase) II beta, calcium/calmodulin-dependent protein kinase type II beta chain, proline rich cal

Gene Pathway

[Calcium signaling pathway](#) [ErbB signaling pathway](#) [Glioma](#) [GnRH signaling pathway](#) [Long-term potentiation](#) [Melanogenesis](#) [Neurotrophin signaling pathway](#) [Olfactory transduction](#) [Wnt signaling pathway](#)

Related Disease

[Attention Deficit Disorder with Hyperactivity](#) [Autistic Disorder](#) [Cognition](#) [NARP](#) [Schizophrenia](#) [Schizophrenia](#) [Schizophrenic Psychology](#) [Tobacco Use Disorder](#) [Weight Gain](#)