



SZABO SCANDIC

Part of Europa Biosite

Produktinformation



Forschungsprodukte & Biochemikalien



Zellkultur & Verbrauchsmaterial



Diagnostik & molekulare Diagnostik



Laborgeräte & Service

Weitere Information auf den folgenden Seiten!
See the following pages for more information!



Lieferung & Zahlungsart

siehe unsere [Liefer- und Versandbedingungen](#)

Zuschläge

- Mindermengenzuschlag
- Trockeneiszuschlag
- Gefahrgutzuschlag
- Expressversand

SZABO-SCANDIC HandelsgmbH

Quellenstraße 110, A-1100 Wien

T. +43(0)1 489 3961-0

F. +43(0)1 489 3961-7

mail@szabo-scandic.com

www.szabo-scandic.com

[linkedin.com/company/szaboscandic](https://www.linkedin.com/company/szaboscandic) 

CAMK2B (Human) IP-WB Antibody Pair

Catalog # : H00000816-PW2

規格 : [1 Set]

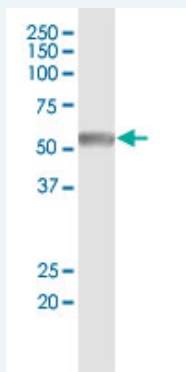
[List All](#)

Specification

Product Description: This IP-WB antibody pair set comes with one antibody for immunoprecipitation and another to detect the precipitated protein in western blot.

Reactivity: Human

Quality Control Testing: Immunoprecipitation-Western Blot (IP-WB)



Immunoprecipitation of CAMK2B transfected lysate using rabbit polyclonal anti-CAMK2B and Protein A Magnetic Bead ([U0007](#)), and immunoblotted with mouse purified polyclonal anti-CAMK2B.

Supplied Product: Antibody pair set content:
 1. Antibody pair for IP: rabbit polyclonal anti-CAMK2B (300 ul)
 2. Antibody pair for WB: mouse purified polyclonal anti-CAMK2B (50 ug)

Storage Instruction: Store reagents of the antibody pair set at -20°C or lower. Please aliquot to avoid repeated freeze thaw cycle. Reagents should be returned to -20°C storage immediately after use.

Applications

Immunoprecipitation-Western Blot

 [Protocol Download](#)

Gene Information

Entrez GeneID: [816](#)

Gene Name: CAMK2B

Gene Alias: CAM2, CAMK2, CAMKB, MGC29528

Gene Description: calcium/calmodulin-dependent protein kinase II beta

Omim ID: [607707](#)

Gene Ontology: [Hyperlink](#)

Gene Summary: The product of this gene belongs to the serine/threonine protein kinase

family and to the Ca(2+)/calmodulin-dependent protein kinase subfamily. Calcium signaling is crucial for several aspects of plasticity at glutamatergic synapses. In mammalian cells, the enzyme is composed of four different chains: alpha, beta, gamma, and delta. The product of this gene is a beta chain. It is possible that distinct isoforms of this chain have different cellular localizations and interact differently with calmodulin. Eight transcript variants encoding eight distinct isoforms have been identified for this gene. [provided by RefSeq

Other Designations: CaM kinase II beta subunit, CaM-kinase II beta chain, CaMK-II beta subunit, OTTHUMP00000159355, OTTHUMP00000159356, calcium/calmodulin-dependent protein kinase (CaM kinase) II beta, calcium/calmodulin-dependent protein kinase type II beta chain, proline rich cal

Gene Pathway

[Calcium signaling pathway](#) [ErbB signaling pathway](#) [Glioma](#) [GnRH signaling pathway](#) [Long-term potentiation](#) [Melanogenesis](#) [Neurotrophin signaling pathway](#) [Olfactory transduction](#) [Wnt signaling pathway](#)

Related Disease

[Attention Deficit Disorder with Hyperactivity](#) [Autistic Disorder](#) [Cognition](#) [NARP](#) [Schizophrenia](#) [Schizophrenia](#) [Schizophrenic Psychology](#) [Tobacco Use Disorder](#) [Weight Gain](#)

[服務條款](#) | [隱私權政策](#) | [著作及商標](#) | [網站地圖](#)

©2016 亞諾法生技股份有限公司 Abnova Corporation. 版權所有.