



SZABO SCANDIC

Part of Europa Biosite

Produktinformation



Forschungsprodukte & Biochemikalien



Zellkultur & Verbrauchsmaterial



Diagnostik & molekulare Diagnostik



Laborgeräte & Service

Weitere Information auf den folgenden Seiten!
See the following pages for more information!



Lieferung & Zahlungsart

siehe unsere [Liefer- und Versandbedingungen](#)

Zuschläge

- Mindermengenzuschlag
- Trockeneiszuschlag
- Gefahrgutzuschlag
- Expressversand

SZABO-SCANDIC HandelsgmbH

Quellenstraße 110, A-1100 Wien

T. +43(0)1 489 3961-0

F. +43(0)1 489 3961-7

mail@szabo-scandic.com

www.szabo-scandic.com

[linkedin.com/company/szaboscandic](https://www.linkedin.com/company/szaboscandic) 

CAMK2D polyclonal antibody (A01)

Catalog # : H00000817-A01

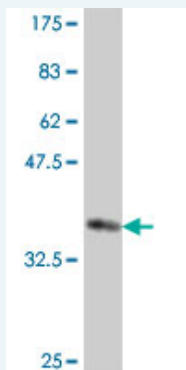
規格 : [50 uL]

[List All](#)

Specification

Product Description:	Mouse polyclonal antibody raised against a partial recombinant CAMK2D.
Immunogen:	CAMK2D (AAH32784, 301 a.a. ~ 410 a.a) partial recombinant protein with GST tag.
Sequence:	KGAILTTLMLATRNFSAAKSLKPKDGVKESTESSNTTIEDEDVKARKQEIIK VTEQLIEAINNGDFEAYTKICDPGLTAFEPEALGNLVEGMDFHRFYFENAL SKSNKPI
Host:	Mouse
Reactivity:	Human

Quality Control Testing: Antibody Reactive Against Recombinant Protein.



Western Blot detection against Immunogen (38.1 KDa) .

Storage Buffer: 50 % glycerol

Storage Instruction: Store at -20°C or lower. Aliquot to avoid repeated freezing and thawing.

MSDS: [Download](#)

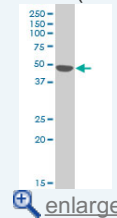
Datasheet: [Download](#)

Applications

Western Blot (Cell lysate)

Application Image

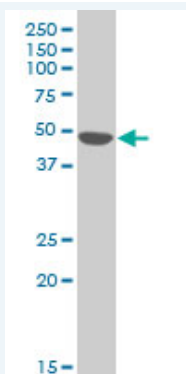
Western Blot (Cell lysate)



[enlarge](#)

Western Blot (Recombinant protein)

ELISA



CAMK2D polyclonal antibody (A01), Lot # 051115JC01 Western Blot analysis of CAMK2D expression in MES-SA/Dx5 (Cat # L021V1).

 [Protocol Download](#)

Western Blot (Recombinant protein)

 [Protocol Download](#)

ELISA

Gene Information

Entrez GeneID: [817](#)

GeneBank [BC032784](#)

Accession#:

Protein [AAH32784](#)

Accession#:

Gene Name: CAMK2D

Gene Alias: CAMKD,DKFZp686G23119,DKFZp686I2288,MGC44911

Gene Description: calcium/calmodulin-dependent protein kinase II delta

Omim ID: [607708](#)

Gene Ontology: [Hyperlink](#)

Gene Summary: The product of this gene belongs to the serine/threonine protein kinase family and to the Ca(2+)/calmodulin-dependent protein kinase subfamily. Calcium signaling is crucial for several aspects of plasticity at glutamatergic synapses. In mammalian cells, the enzyme is composed of four different chains: alpha, beta, gamma, and delta. The product of this gene is a delta chain. Alternative splicing results in multiple transcript variants encoding distinct isoforms. Distinct isoforms of this chain have different expression patterns

Other Designations: CaM kinase II delta subunit,CaM-kinase II delta chain,CaMK-II delta subunit,OTTHUMP00000163829,OTTHUMP00000163830,calcium/calmodulin-dependent protein kinase (CaM kinase) II delta,calcium/calmodulin-dependent protein kinase type II delta chain

Gene Pathway

[Calcium signaling pathway](#) [ErbB signaling pathway](#) [Glioma](#) [GnRH signaling pathway](#) [Long-term potentiation](#) [Melanogenesis](#) [Neurotrophin signaling pathway](#) [Olfactory transduction](#) [Wnt signaling pathway](#)

Related Disease

[Alcoholism](#) [Genetic Predisposition to Disease](#) [Mucocutaneous Lymph Node Syndrome](#) [Tobacco Use Disorder](#)

[服務條款](#) | [隱私權政策](#) | [著作及商標](#) | [網站地圖](#)

©2016 亞諾法生技股份有限公司 Abnova Corporation. 版權所有.