



SZABO SCANDIC

Part of Europa Biosite

Produktinformation



Forschungsprodukte & Biochemikalien



Zellkultur & Verbrauchsmaterial



Diagnostik & molekulare Diagnostik



Laborgeräte & Service

Weitere Information auf den folgenden Seiten!
See the following pages for more information!



Lieferung & Zahlungsart

siehe unsere [Liefer- und Versandbedingungen](#)

Zuschläge

- Mindermengenzuschlag
- Trockeneiszuschlag
- Gefahrgutzuschlag
- Expressversand

SZABO-SCANDIC HandelsgmbH

Quellenstraße 110, A-1100 Wien

T. +43(0)1 489 3961-0

F. +43(0)1 489 3961-7

mail@szabo-scandic.com

www.szabo-scandic.com

[linkedin.com/company/szaboscandic](https://www.linkedin.com/company/szaboscandic) 

CAMK2D purified MaxPab rabbit polyclonal antibody (D01P) MaxPab®

Catalog # : H00000817-D01P

規格 : [100 ug]

[List All](#)

Specification

Product Description: Rabbit polyclonal antibody raised against a full-length human CAMK2D protein.

Immunogen: CAMK2D (NP_742126.1, 1 a.a. ~ 478 a.a) full-length human protein.

Sequence:
 MASTTTCTRFTDEYQLFEELGKGAFSVVRRCKIPTGQEYAAKIINTKKL
 SARDHQKLEREARICRLLKHPNIVRLHDSISEEGFHLYVFDLVTGGELFED
 IVAREYYSEADASHCIQQILESVNHCHLNGIVHRDLKPENLLASKSKGAAV
 KLADFGLAIEVQGDQQAWFGFAGTPGYLSPEVLRKDPYGKPVDMWAC
 GVILYILLVGYPPFWDEDQHRLYQQIKAGAYDFPSPEWDTVTPEAKDLIN
 KMLTINPAKRITASEALKHPWICQRSTVASMMHRQETVDCLKKFNARRKL
 KGAILTTMLATRNFSAAKSLKPKDGVKESTESSNTTIEDEDVKARKQEIIK
 VTEQLIEAINNGDFEAYTKICDPGLTAFEPEALGNLVEGMDFHRFYFENAL
 SKSNKPIHTILNPHVHLVGDDAACIAYIRLTQYMDGSGMPKTMQSEETRV
 WHRRDGKWQNVHFHRSQSPTVPIN

Host: Rabbit

Reactivity: Human

Quality Control Testing: Antibody reactive against mammalian transfected lysate.

Storage Buffer: In 1x PBS, pH 7.4

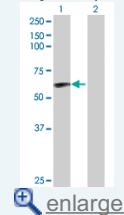
Storage Instruction: Store at -20°C or lower. Aliquot to avoid repeated freezing and thawing.

MSDS:  [Download](#)

Datasheet:  [Download](#)

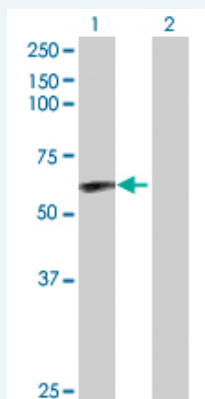
Application Image

Western Blot (Transfected lysate)



Applications

Western Blot (Transfected lysate)



Western Blot analysis of CAMK2D expression in transfected 293T cell line (H00000817-T04) by CAMK2D MaxPab polyclonal antibody.

Lane 1: CAMK2D transfected lysate(54.10 KDa).
 Lane 2: Non-transfected lysate.

Gene Information

Entrez GeneID: [817](#)

GeneBank Accession#: [NM_172128.1](#)

Protein Accession#: [NP_742126.1](#)

Gene Name: CAMK2D

Gene Alias: CAMKD,DKFZp686G23119,DKFZp686I2288,MGC44911

Gene Description: calcium/calmodulin-dependent protein kinase II delta

Omim ID: [607708](#)

Gene Ontology: [Hyperlink](#)

Gene Summary: The product of this gene belongs to the serine/threonine protein kinase family and to the Ca(2+)/calmodulin-dependent protein kinase subfamily. Calcium signaling is crucial for several aspects of plasticity at glutamatergic synapses. In mammalian cells, the enzyme is composed of four different chains: alpha, beta, gamma, and delta. The product of this gene is a delta chain. Alternative splicing results in multiple transcript variants encoding distinct isoforms. Distinct isoforms of this chain have different expression patterns

Other Designations: CaM kinase II delta subunit,CaM-kinase II delta chain,CaMK-II delta subunit,OTTHUMP00000163829,OTTHUMP00000163830,calcium/calmodulin-dependent protein kinase (CaM kinase) II delta,calcium/calmodulin-dependent protein kinase type II delta chain

Gene Pathway

[Calcium signaling pathway](#) [ErbB signaling pathway](#) [Glioma](#) [GnRH signaling pathway](#) [Long-term potentiation](#) [Melanogenesis](#) [Neurotrophin signaling pathway](#) [Olfactory transduction](#) [Wnt signaling pathway](#)

Related Disease

[Alcoholism](#) [Genetic Predisposition to Disease](#) [Mucocutaneous Lymph Node Syndrome](#) [Tobacco Use Disorder](#)