



SZABO SCANDIC

Part of Europa Biosite

Produktinformation



Forschungsprodukte & Biochemikalien



Zellkultur & Verbrauchsmaterial



Diagnostik & molekulare Diagnostik



Laborgeräte & Service

Weitere Information auf den folgenden Seiten!
See the following pages for more information!



Lieferung & Zahlungsart

siehe unsere [Liefer- und Versandbedingungen](#)

Zuschläge

- Mindermengenzuschlag
- Trockeneiszuschlag
- Gefahrgutzuschlag
- Expressversand

SZABO-SCANDIC HandelsgmbH

Quellenstraße 110, A-1100 Wien

T. +43(0)1 489 3961-0

F. +43(0)1 489 3961-7

mail@szabo-scandic.com

www.szabo-scandic.com

[linkedin.com/company/szaboscandic](https://www.linkedin.com/company/szaboscandic) 

CAMK2D monoclonal antibody (M02), clone 1A8

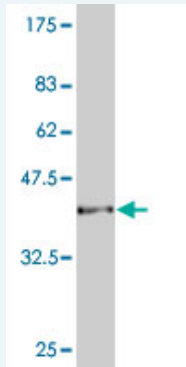
產品編號 # : H00000817-M02

規格 : [100 ug]

[List All](#)

Specification

Product Description:	Mouse monoclonal antibody raised against a partial recombinant CAMK2D.
Immunogen:	CAMK2D (AAH32784, 301 a.a. ~ 410 a.a) partial recombinant protein with GST tag. MW of the GST tag alone is 26 KDa.
Sequence:	KGAILTTMLATRNFSAAKSLLKPKDGVKESTESSNTTIEDEDVKARKQEIIK VTEQLIEAINNGDFEAYTKICDPGLTAFEPEALGNLVEGMDFHRFYFENAL SKSNKPI
Host:	Mouse
Reactivity:	Human, Mouse
Isotype:	IgG2b Lambda
Quality Control Testing:	Antibody Reactive Against Recombinant Protein.



Western Blot detection against Immunogen (37.73 KDa) .

Storage Buffer: In 1x PBS, pH 7.4

Storage Instruction: Store at -20°C or lower. Aliquot to avoid repeated freezing and thawing.

MSDS: [Download](#)

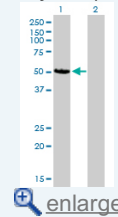
Datasheet: [Download](#)

Applications

Western Blot (Transfected lysate)

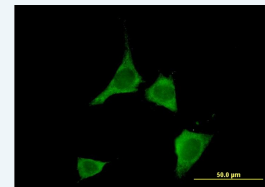
Application Image

Western Blot (Transfected lysate)



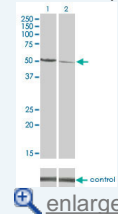
Western Blot (Recombinant protein)

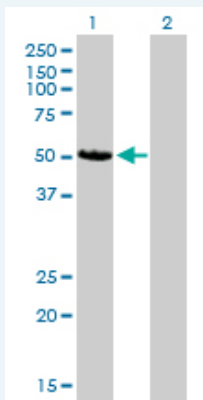
Immunofluorescence



ELISA

RNAi Knockdown (Antibody validated)





Western Blot analysis of CAMK2D expression in transfected 293T cell line by CAMK2D monoclonal antibody (M02), clone 1A8.

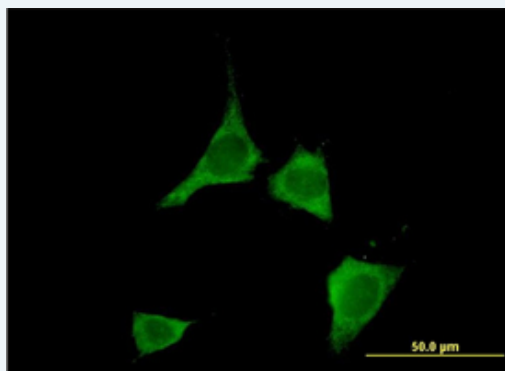
Lane 1: CAMK2D transfected lysate(54.1 KDa).
Lane 2: Non-transfected lysate.

[Protocol Download](#)

Western Blot (Recombinant protein)

[Protocol Download](#)

Immunofluorescence



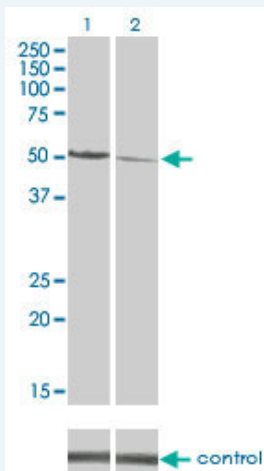
[enlarge this image](#)

Immunofluorescence of monoclonal antibody to CAMK2D on NIH/3T3 cell. [antibody concentration 10 ug/ml]

[Protocol Download](#)

ELISA

RNAi Knockdown (Antibody validated)



Western blot analysis of CAMK2D over-expressed 293 cell line, cotransfected with CAMK2D Validated Chimera RNAi (Cat # H00000817-R01V) (Lane 2) or non-transfected control (Lane 1). Blot probed with CAMK2D monoclonal antibody (M02) clone 1A8 (Cat # H00000817-M02). GAPDH (36.1 kDa) used as specificity and loading control.

[Protocol Download](#)

Gene Information

Entrez GeneID: [817](#)

GeneBank [BC032784](#)
Accession#:

Protein [AAH32784](#)
Accession#:

Gene Name: CAMK2D

Gene Alias: CAMKD,DKFZp686G23119,DKFZp686I2288,MGC44911

Gene Description: calcium/calmodulin-dependent protein kinase II delta

Omim ID: [607708](#)

Gene Ontology: [Hyperlink](#)

Gene Summary: The product of this gene belongs to the serine/threonine protein kinase family and to the Ca(2+)/calmodulin-dependent protein kinase subfamily. Calcium signaling is crucial for several aspects of plasticity at glutamatergic synapses. In mammalian cells, the enzyme is composed of four different chains: alpha, beta, gamma, and delta. The product of this gene is a delta chain. Alternative splicing results in multiple transcript variants encoding distinct isoforms. Distinct isoforms of this chain have different expression patterns

Other Designations: CaM kinase II delta subunit,CaM-kinase II delta chain,CaMK-II delta subunit,OTTHUMP00000163829,OTTHUMP00000163830,calcium/calmodulin-dependent protein kinase (CaM kinase) II delta,calcium/calmodulin-dependent protein kinase type II delta chain

Gene Pathway

[Calcium signaling pathway](#) [ErbB signaling pathway](#) [Glioma](#) [GnRH signaling pathway](#) [Long-term potentiation](#) [Melanogenesis](#) [Neurotrophin signaling pathway](#) [Olfactory transduction](#) [Wnt signaling pathway](#)

Related Disease

[Alcoholism](#) [Genetic Predisposition to Disease](#) [Mucocutaneous Lymph Node Syndrome](#) [Tobacco Use Disorder](#)

[服務條款](#) | [隱私權政策](#) | [著作及商標](#) | [網站地圖](#)

©2016 亞諾法生技股份有限公司 Abnova Corporation. 版權所有.