



# SZABO SCANDIC

Part of Europa Biosite

## Produktinformation



Forschungsprodukte & Biochemikalien



Zellkultur & Verbrauchsmaterial



Diagnostik & molekulare Diagnostik



Laborgeräte & Service

Weitere Information auf den folgenden Seiten!  
See the following pages for more information!



### Lieferung & Zahlungsart

siehe unsere [Liefer- und Versandbedingungen](#)

### Zuschläge

- Mindermengenzuschlag
- Trockeneiszuschlag
- Gefahrgutzuschlag
- Expressversand

### SZABO-SCANDIC HandelsgmbH

Quellenstraße 110, A-1100 Wien

T. +43(0)1 489 3961-0

F. +43(0)1 489 3961-7

[mail@szabo-scandic.com](mailto:mail@szabo-scandic.com)

[www.szabo-scandic.com](http://www.szabo-scandic.com)

[linkedin.com/company/szaboscandic](https://www.linkedin.com/company/szaboscandic) 

## CAMK2D Validated Chimera RNAi

Catalog # : H00000817-R01V

規格 : [ 10 nmol ] [ 20 nmol ]

[List All](#)

### Specification

**Product Description:** Homo sapiens calcium/calmodulin-dependent protein kinase (CaM kinase) II delta (CAMK2D), transcript variant 4, mRNA.

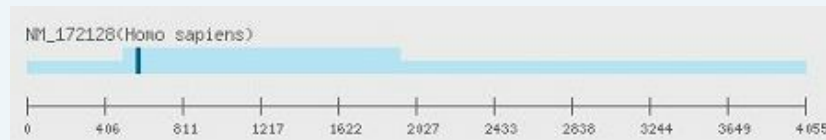
**Reactivity:** Human

**Supplied Product:** DEPC water

**Target Refseq:** NM\_172128

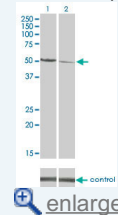
**Storage Instruction:** Store at -20°C, do not exceed 4 - 5 freeze-thaw cycles to ensure product integrity.

**Note:** Position of the Chimera RNAi.



### Application Image

RNAi Knockdown (Antibody validated)

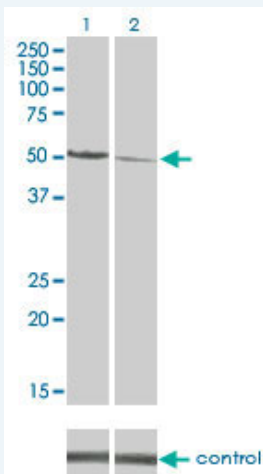


### Publication Reference


- [dsCheck: highly sensitive off-target search software for double-stranded RNA-mediated RNA interference.](#)  
Naito Y, Yamada T, Matsumiya T, Ui-Tei K, Saigo K, Morishita S. *Nucleic Acids Res.* 2005 Jul 1;33(Web Server issue):W589-91.
- [Functional dissection of siRNA sequence by systematic DNA substitution: modified siRNA with a DNA seed arm is a powerful tool for mammalian gene silencing with significantly reduced off-target effect.](#)  
Ui-Tei K, Naito Y, Zenno S, Nishi K, Yamato K, Takahashi F, Juni A, Saigo K. *Nucleic Acids Res.* 2008 Apr;36(7):2136-51. Epub 2008 Feb 11.
- [Guidelines for the selection of highly effective siRNA sequences for mammalian and chick RNA interference.](#)  
Ui-Tei K, Naito Y, Takahashi F, Haraguchi T, Ohki-Hamazaki H, Juni A, Ueda R, Saigo K. *Nucleic Acids Res.* 2004 Feb 9;32(3):936-48. Print 2004.
- [siDirect: highly effective, target-specific siRNA design software for mammalian RNA interference.](#)  
Naito Y, Yamada T, Ui-Tei K, Morishita S, Saigo K. *Nucleic Acids Res.* 2004 Jul 1;32(Web Server issue):W124-9.

### Applications

**RNAi Knockdown (Antibody validated)**



Western blot analysis of CAMK2D over-expressed 293 cell line, cotransfected with CAMK2D Validated Chimera RNAi ( Cat # H00000817-R01V ) (Lane 2) or non-transfected control (Lane 1). Blot probed with CAMK2D monoclonal antibody (M02) clone 1A8 (Cat # H00000817-M02 ). GAPDH ( 36.1 kDa ) used as specificity and loading control.

 [Protocol Download](#)

## Gene Information

**Entrez GeneID:** [817](#)

**Gene Name:** CAMK2D

**Gene Alias:** CAMKD,DKFZp686G23119,DKFZp686I2288,MGC44911

**Gene Description:** calcium/calmodulin-dependent protein kinase II delta

**Omim ID:** [607708](#)

**Gene Ontology:** [Hyperlink](#)

**Gene Summary:** The product of this gene belongs to the serine/threonine protein kinase family and to the Ca(2+)/calmodulin-dependent protein kinase subfamily. Calcium signaling is crucial for several aspects of plasticity at glutamatergic synapses. In mammalian cells, the enzyme is composed of four different chains: alpha, beta, gamma, and delta. The product of this gene is a delta chain. Alternative splicing results in multiple transcript variants encoding distinct isoforms. Distinct isoforms of this chain have different expression patterns

**Other Designations:** CaM kinase II delta subunit,CaM-kinase II delta chain,CaMK-II delta subunit,OTTHUMP00000163829,OTTHUMP00000163830,calcium/calmodulin-dependent protein kinase (CaM kinase) II delta,calcium/calmodulin-dependent protein kinase type II delta chain

## Gene Pathway

[Calcium signaling pathway](#) [ErbB signaling pathway](#) [Glioma GnRH signaling pathway](#)  
[Long-term potentiation](#) [Melanogenesis](#) [Neurotrophin signaling pathway](#)  
[Olfactory transduction](#) [Wnt signaling pathway](#)

## Related Disease

[Alcoholism](#) [Genetic Predisposition to Disease](#) [Mucocutaneous Lymph Node Syndrome](#)  
[Tobacco Use Disorder](#)