



# SZABO SCANDIC

Part of Europa Biosite

## Produktinformation



Forschungsprodukte & Biochemikalien



Zellkultur & Verbrauchsmaterial



Diagnostik & molekulare Diagnostik



Laborgeräte & Service

Weitere Information auf den folgenden Seiten!  
See the following pages for more information!



### Lieferung & Zahlungsart

siehe unsere [Liefer- und Versandbedingungen](#)

### Zuschläge

- Mindermengenzuschlag
- Trockeneiszuschlag
- Gefahrgutzuschlag
- Expressversand

### SZABO-SCANDIC HandelsgmbH

Quellenstraße 110, A-1100 Wien

T. +43(0)1 489 3961-0

F. +43(0)1 489 3961-7

[mail@szabo-scandic.com](mailto:mail@szabo-scandic.com)

[www.szabo-scandic.com](http://www.szabo-scandic.com)

[linkedin.com/company/szaboscandic](https://www.linkedin.com/company/szaboscandic) 

# CAMK2G purified MaxPab mouse polyclonal antibody (B01P) MaxPab®

Catalog # : H00000818-B01P

規格 : [ 50 ug ]

[List All](#)

## Specification

**Product Description:** Mouse polyclonal antibody raised against a full-length human CAMK2G protein.

**Immunogen:** CAMK2G (AAH34044.1, 1 a.a. ~ 527 a.a) full-length human protein.

**Sequence:**  
 MATTATCTRFTDDYQLFEELGKGAFSGVRRVCVKTPTQEYAAKIINTKK  
 LSARDHQKLREARICRLLKHPNIVRLHDSISEEGFHYLVFDLVTGGELFE  
 DIVAREYYSEADASHCIHQILESVNHHQHDIVHRDLKPENLLLASKCKGAA  
 VKLADFGLAIEVQGEQQAQWFGFAGTPGYLSPEVLRKDPYGKPVDIWAC  
 GVILYILLVGYPPFWDEDQHKLYQQIKAGAYDFPSPEWDTVTPEAKNLIN  
 QMLTINPAKRITADQALKHPWVCQRSTVASMMHRQETVECLRKFNARRK  
 LKGAILTTMLVSRNFSVGRQSSAPASPAASAAGLAGQAAKSLLNKKS DG  
 GVKKRKSSSSVHLMPEPQTTVHNATDGIGKSTESCNTTTEDEDLKVRKQ  
 EIIKITEQLIEAINNGDFEAYTKICDPGLTSFEPEALGNLVEGMDFHKFYFEN  
 LLSKNSKPIHTILNPHVHVIGEDAACIAYIRLTQYIDGQGRPRTSQSEETR  
 VWHRRDGGKWLNVHYHCSGAPAAPLQ

**Host:** Mouse

**Reactivity:** Human, Rat

**Quality Control Testing:** Antibody reactive against mammalian transfected lysate.

**Storage Buffer:** In 1x PBS, pH 7.4

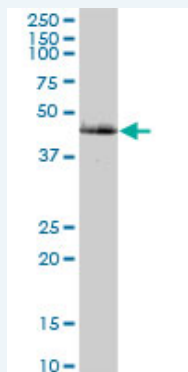
**Storage Instruction:** Store at -20°C or lower. Aliquot to avoid repeated freezing and thawing.

**MSDS:** [Download](#)

**Datasheet:** [Download](#)

## Applications

### Western Blot (Tissue lysate)

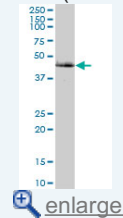


CAMK2G MaxPab polyclonal antibody. Western Blot analysis of CAMK2G expression in human liver.

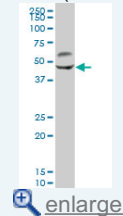
[Protocol Download](#)

## Application Image

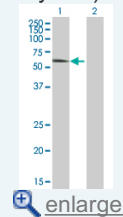
### Western Blot (Tissue lysate)



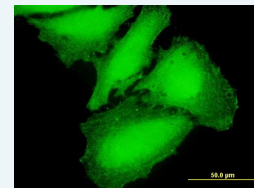
### Western Blot (Tissue lysate)



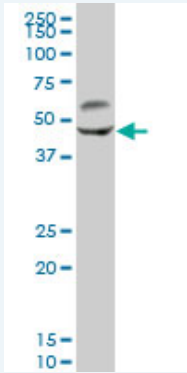
### Western Blot (Transfected lysate)




### Immunofluorescence



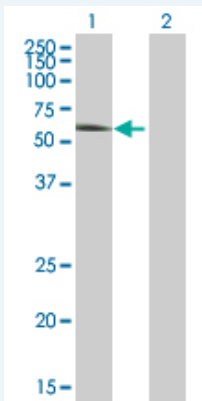
### Western Blot (Tissue lysate)



CAMK2G MaxPab polyclonal antibody. Western Blot analysis of CAMK2G expression in rat brain.

 [Protocol Download](#)

### Western Blot (Transfected lysate)



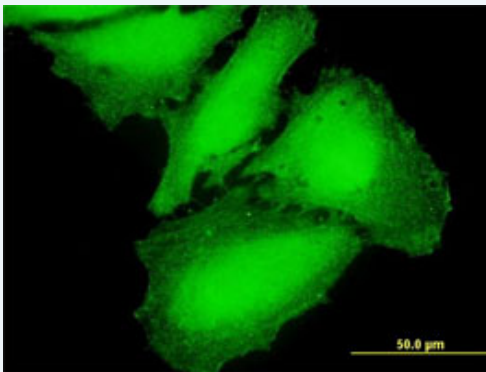
Western Blot analysis of CAMK2G expression in transfected 293T cell line (H00000818-T01) by CAMK2G MaxPab polyclonal antibody.


Lane 1: CAMK2G transfected lysate(58.08 KDa).

Lane 2: Non-transfected lysate.

 [Protocol Download](#)

### Immunofluorescence



 [enlarge this image](#)

Immunofluorescence of purified MaxPab antibody to CAMK2G on HeLa cell. [antibody concentration 10 ug/ml]

 [Protocol Download](#)

### Gene Information

Entrez GeneID: [818](#)

GeneBank [BC034044.1](#)

Accession#:

Protein [AAH34044.1](#)

Accession#:

**Gene Name:** CAMK2G

**Gene Alias:** CAMK,CAMK-II,CAMKG,FLJ16043,MGC26678

**Gene Description:** calcium/calmodulin-dependent protein kinase II gamma

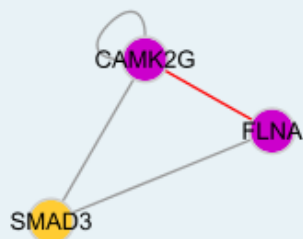
**Omim ID:** [602123](#)

**Gene Ontology:** [Hyperlink](#)

**Gene Summary:** The product of this gene belongs to the Serine/Threonine protein kinase family, and to the Ca(2+)/calmodulin-dependent protein kinase subfamily. Calcium signaling is crucial for several aspects of plasticity at glutamatergic synapses. In mammalian cells the enzyme is composed of four different chains: alpha, beta, gamma, and delta. The product of this gene is a gamma chain. Six alternatively spliced variants that encode six different isoforms have been characterized to date. Additional alternative splice variants that encode different isoforms have been described, but their full-length nature has not been determined. [provided by RefSeq]

**Other Designations:** CaM kinase II,OTTHUMP00000019843,OTTHUMP00000019844,calcium/calmodulin-dependent protein kinase (CaM kinase) II gamma

### Interactome



### Gene Pathway

[Calcium signaling pathway](#) [ErbB signaling pathway](#) [Glioma](#) [GnRH signaling pathway](#)  
[Long-term potentiation](#) [Melanogenesis](#) [Neurotrophin signaling pathway](#)  
[Olfactory transduction](#) [Wnt signaling pathway](#)

### Related Disease

[Alzheimer Disease](#) [Alzheimer disease](#) [Cardiovascular Diseases](#)  
[Cerebral Amyloid Angiopathy](#) [Diabetes Mellitus, Type 2](#) [Edema](#)  
[Genetic Predisposition to Disease](#) [Neuroblastoma](#)