



SZABO SCANDIC

Part of Europa Biosite

Produktinformation



Forschungsprodukte & Biochemikalien



Zellkultur & Verbrauchsmaterial



Diagnostik & molekulare Diagnostik



Laborgeräte & Service

Weitere Information auf den folgenden Seiten!
See the following pages for more information!



Lieferung & Zahlungsart

siehe unsere [Liefer- und Versandbedingungen](#)

Zuschläge

- Mindermengenzuschlag
- Trockeneiszuschlag
- Gefahrgutzuschlag
- Expressversand

SZABO-SCANDIC HandelsgmbH

Quellenstraße 110, A-1100 Wien

T. +43(0)1 489 3961-0

F. +43(0)1 489 3961-7

mail@szabo-scandic.com

www.szabo-scandic.com

[linkedin.com/company/szaboscandic](https://www.linkedin.com/company/szaboscandic) 

CAMK2G purified MaxPab mouse polyclonal antibody (B02P) MaxPab®

Catalog # : H00000818-B02P

規格 : [50 ug]

[List All](#)

Specification

Product Description: Mouse polyclonal antibody raised against a full-length human CAMK2G protein.

Immunogen: CAMK2G (AAH34044.1, 1 a.a. ~ 527 a.a) full-length human protein.

Sequence:
 MATTATCTRFTDDYQLFEELGKGAFSVVRRRCVKKTPTEYAAKIINTKKL
 SARDHQKLREARICRLLKHPNIVRLHDSISEEGFHLYVFDLVTGGELFED
 IVAREYYSEADASHCIHQILESVNHHQHDIVHRDLKPENLLASKCKGAAV
 KLADFGLAIEVQGEQQAWFGFAGTPGYLSPEVLRKDPYGKPVDIWACG
 VILYILLVGYPWFDEQHKLYQKIKAGAYDFPSPEWDTVTPEAKNLINQ
 MLTINPAKRITADQALKHPWVCQRSTVASMMHRQETVECLRKFNARRKL
 KGAILTTMLVSRNFSVGRQSSAPASPAASAAGLAGQAASLLNKKSDGG
 VKKRKSSSSVHLMPEQTTVHNATDGIKGSTESCNTTEDEDLKVRKQEI
 IKITEQLIEAINNGDFEAYTKICDPGLTSFEPEALGNLVEGMDFKFYFENL
 LSKNSKPIHTTILNPHVHVIGEDAACIAYIRLTQYIDGQGRPRTSQSEETRV
 WHRRDGKWLNVHYHCSGAPAAPLQ

Host: Mouse

Reactivity: Human, Rat

Quality Control Testing: Antibody reactive against mammalian transfected lysate.

Storage Buffer: In 1x PBS, pH 7.4

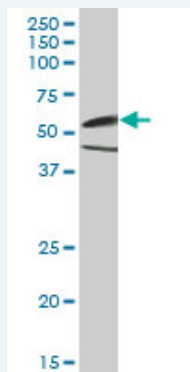
Storage Instruction: Store at -20°C or lower. Aliquot to avoid repeated freezing and thawing.

MSDS:  [Download](#)

Datasheet:  [Download](#)

Applications

Western Blot (Tissue lysate)

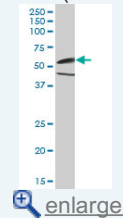


CAMK2G MaxPab polyclonal antibody. Western Blot analysis of CAMK2G expression in rat brain.

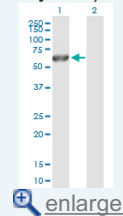
 [Protocol Download](#)

Application Image

Western Blot (Tissue lysate)



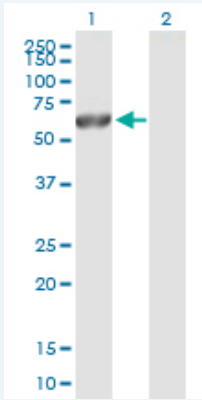
Western Blot (Transfected lysate)



Immunofluorescence



Western Blot (Transfected lysate)



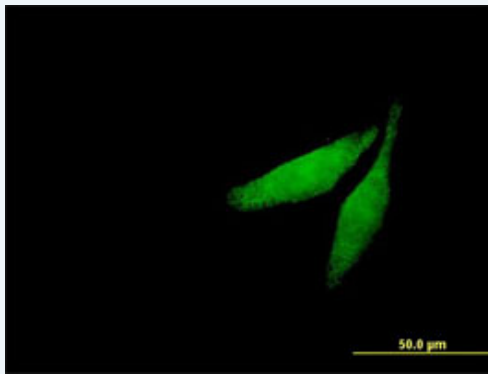
Western Blot analysis of CAMK2G expression in transfected 293T cell line ([H00000818-T04](#)) by CAMK2G MaxPab polyclonal antibody.

Lane 1: CAMK2G transfected lysate(57.97 KDa).

Lane 2: Non-transfected lysate.

[Protocol Download](#)

Immunofluorescence



Immunofluorescence of purified MaxPab antibody to CAMK2G on HeLa cell. [antibody concentration 10 ug/ml]

[Protocol Download](#)

Gene Information

Entrez GeneID: [818](#)

GeneBank [BC034044.1](#)

Accession#:

Protein [AAH34044.1](#)

Accession#:

Gene Name: CAMK2G

Gene Alias: CAMK,CAMK-II,CAMKG,FLJ16043,MGC26678

Gene Description: calcium/calmodulin-dependent protein kinase II gamma

Omim ID: [602123](#)

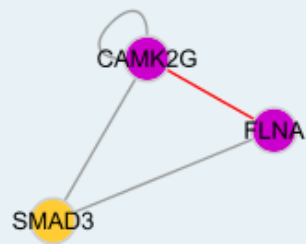
Gene Ontology: [Hyperlink](#)

Gene Summary: The product of this gene belongs to the Serine/Threonine protein kinase family, and to the Ca(2+)/calmodulin-dependent protein kinase subfamily. Calcium signaling is crucial for several aspects of plasticity at glutamatergic synapses. In mammalian cells the enzyme is composed of four different chains: alpha, beta, gamma, and delta. The product of this gene is a gamma chain. Six alternatively spliced variants that encode six different isoforms have been characterized to date. Additional

alternative splice variants that encode different isoforms have been described, but their full-length nature has not been determined.
[provided by RefSeq]

Other Designations: CaM kinase II, OTTHUMP00000019843, OTTHUMP00000019844, calcium/calmodulin-dependent protein kinase (CaM kinase) II gamma

Interactome



Gene Pathway

[Calcium signaling pathway](#) [ErbB signaling pathway](#) [Glioma](#) [GnRH signaling pathway](#)
[Long-term potentiation](#) [Melanogenesis](#) [Neurotrophin signaling pathway](#)
[Olfactory transduction](#) [Wnt signaling pathway](#)

Related Disease

[Alzheimer Disease](#) [Alzheimer disease](#) [Cardiovascular Diseases](#)
[Cerebral Amyloid Angiopathy](#) [Diabetes Mellitus, Type 2](#) [Edema](#)
[Genetic Predisposition to Disease](#) [Neuroblastoma](#)

[服務條款](#) | [隱私權政策](#) | [著作及商標](#) | [網站地圖](#)

©2016 亞諾法生技股份有限公司 Abnova Corporation. 版權所有.